

Quality ID #126 (NQF 0417): Diabetes Mellitus: Diabetic Foot and Ankle Care, Peripheral Neuropathy
 – Neurological Evaluation
 – National Quality Strategy Domain: Effective Clinical Care
 – Meaningful Measure Area: Preventive Care

2019 COLLECTION TYPE:
MIPS CLINICAL QUALITY MEASURES (CQMS)

MEASURE TYPE:
 Process

DESCRIPTION:
 Percentage of patients aged 18 years and older with a diagnosis of diabetes mellitus who had a neurological examination of their lower extremities within 12 months

INSTRUCTIONS:
 This measure is to be submitted a minimum of **once per performance period** for patients with diabetes mellitus seen during the performance period. Evaluation of neurological status in patients with diabetes to assign risk category and therefore have appropriate foot and ankle care to prevent ulcerations and infections ultimately reduces the number and severity of amputations that occur. Risk categorization and follow up treatment plan should be done according to the following table:

Table 1 - Risk Categorization System

Category	Risk Profile	Evaluation Frequency
0	Normal	Annual
1	Peripheral Neuropathy (LOPS)	Semi-annual
2	Neuropathy, deformity, and/or PAD	Quarterly
3	Previous ulcer or amputation	Monthly to quarterly

This measure may be submitted by non-medical doctor/doctor of osteopathic medicine (MD/DO) Merit-based Incentive Payment System (MIPS) eligible clinicians who perform the quality actions described in the measure based on the services provided and the measure-specific denominator coding.

Measure Submission Type:
 Measure data may be submitted by individual MIPS eligible clinicians, groups, or third party intermediaries. The listed denominator criteria are used to identify the intended patient population. The numerator options included in this specification are used to submit the quality actions as allowed by the measure. The quality-data codes listed do not need to be submitted by MIPS eligible clinicians, groups, or third party intermediaries that utilize this modality for submissions; however, these codes may be submitted for those third party intermediaries that utilize Medicare Part B claims data. For more information regarding Application Programming Interface (API), please refer to the Quality Payment Program (QPP) website.

DENOMINATOR:
 All patients aged 18 years and older with a diagnosis of diabetes mellitus

Denominator Criteria (Eligible Cases):
 Patients aged ≥ 18 years on date of encounter

AND
Diagnosis for diabetes (ICD-10-CM): E10.10, E10.11, E10.21, E10.22, E10.29, E10.311, E10.319, E10.3211, E10.3212, E10.3213, E10.3219, E10.3291, E10.3292, E10.3293, E10.3299, E10.3311, E10.3312, E10.3313, E10.3319, E10.3391, E10.3392, E10.3393, E10.3399, E10.3411, E10.3412, E10.3413, E10.3419, E10.3491, E10.3492, E10.3493, E10.3499, E10.3511, E10.3512, E10.3513,

E10.3519, E10.3521, E10.3522, E10.3523, E10.3529, E10.3531, E10.3532, E10.3533, E10.3539, E10.3541, E10.3542, E10.3543, E10.3549, E10.3551, E10.3552, E10.3553, E10.3559, E10.3591, E10.3592, E10.3593, E10.3599, E10.37X1, E10.37X2, E10.37X3, E10.37X9, E10.36, E10.39, E10.40, E10.41, E10.42, E10.43, E10.44, E10.49, E10.51, E10.52, E10.59, E10.610, E10.618, E10.620, E10.621, E10.622, E10.628, E10.630, E10.638, E10.641, E10.649, E10.65, E10.69, E10.8, E10.9, E11.00, E11.01, E11.10, E11.11, E11.21, E11.22, E11.29, E11.311, E11.319, E11.3211, E11.3212, E11.3213, E11.3219, E11.3291, E11.3292, E11.3293, E11.3299, E11.3311, E11.3312, E11.3313, E11.3319, E11.3391, E11.3392, E11.3393, E11.3399, E11.3411, E11.3412, E11.3413, E11.3419, E11.3491, E11.3492, E11.3493, E11.3499, E11.3511, E11.3512, E11.3513, E11.3519, E11.3521, E11.3522, E11.3523, E11.3529, E11.3531, E11.3532, E11.3533, E11.3539, E11.3541, E11.3542, E11.3543, E11.3549, E11.3551, E11.3552, E11.3553, E11.3559, E11.3591, E11.3592, E11.3593, E11.3599, E11.37X1, E11.37X2, E11.37X3, E11.37X9, E11.36, E11.39, E11.40, E11.41, E11.42, E11.43, E11.44, E11.49, E11.51, E11.52, E11.59, E11.610, E11.618, E11.620, E11.621, E11.622, E11.628, E11.630, E11.638, E11.641, E11.649, E11.65, E11.69, E11.8, E11.9, E13.00, E13.01, E13.10, E13.11, E13.21, E13.22, E13.29, E13.311, E13.319, E13.3211, E13.3212, E13.3213, E13.3219, E13.3291, E13.3292, E13.3293, E13.3299, E13.3311, E13.3312, E13.3313, E13.3319, E13.3391, E13.3392, E13.3393, E13.3399, E13.3411, E13.3412, E13.3413, E13.3419, E13.3491, E13.3492, E13.3493, E13.3499, E13.3511, E13.3512, E13.3513, E13.3519, E13.3521, E13.3522, E13.3523, E13.3529, E13.3531, E13.3532, E13.3533, E13.3539, E13.3541, E13.3542, E13.3543, E13.3549, E13.3551, E13.3552, E13.3553, E13.3559, E13.3591, E13.3592, E13.3593, E13.3599, E13.37X1, E13.37X2, E13.37X3, E13.37X9, E13.36, E13.39, E13.40, E13.41, E13.42, E13.43, E13.44, E13.49, E13.51, E13.52, E13.59, E13.610, E13.618, E13.620, E13.621, E13.622, E13.628, E13.630, E13.638, E13.641, E13.649, E13.65, E13.69, E13.8, E13.9

AND

Patient encounter during the performance period (CPT): 11042, 11043, 11044, 11055, 11056, 11057, 11719, 11720, 11721, 11730, 11740, 97161, 97162, 97163, 97164, 97597, 97598, 97802, 97803, 99201, 99202, 99203, 99204, 99205, 99212, 99213, 99214, 99215, 99304, 99305, 99306, 99307, 99308, 99309, 99310, 99324, 99325, 99326, 99327, 99328, 99334, 99335, 99336, 99337, 99341, 99342, 99343, 99344, 99345, 99347, 99348, 99349, 99350

WITHOUT

Telehealth Modifier: GQ, GT, 95, POS 02

AND NOT

DENOMINATOR EXCLUSION:

Clinician documented that patient was not an eligible candidate for lower extremity neurological exam measure, for example patient bilateral amputee, patient has condition that would not allow them to accurately respond to a neurological exam (dementia, Alzheimer's, etc.), patient has previously documented diabetic peripheral neuropathy with loss of protective sensation

NUMERATOR:

Patients who had a lower extremity neurological exam performed at least once within 12 months

Definition:

Lower Extremity Neurological Exam – Consists of a documented evaluation of motor and sensory abilities and should include: 10-g monofilament plus testing any one of the following: vibration using 128-Hz tuning fork, pinprick sensation, ankle reflexes, or vibration perception threshold, however the clinician should perform all necessary tests to make the proper evaluation.

NUMERATOR NOTE: *To determine performance met the lower extremity neurological exam could be performed and documented on the date of the denominator eligible encounter or within the 12-month lookback period from the date of the denominator eligible encounter.*

Numerator Options:

Performance Met:

Lower extremity neurological exam performed and documented (**G8404**)

OR

Performance Not Met:

Lower extremity neurological exam not performed (**G8405**)

RATIONALE:

Foot ulceration is the most common single precursor to lower extremity amputations among persons with diabetes. Treatment of infected foot wounds accounts for up to one-quarter of all inpatient hospital admissions for people with diabetes in the United States. Peripheral sensory neuropathy in the absence of perceived trauma is the primary factor leading to diabetic foot ulcerations. Approximately 45-60% of all diabetic ulcerations are purely neuropathic. Other forms of neuropathy may also play a role in foot ulcerations. Motor neuropathy resulting in anterior crural muscle atrophy or intrinsic muscle wasting can lead to foot deformities such as foot drop, equinus, and hammertoes. In people with diabetes, 22.8% have foot problems such as amputations and numbness compared with 10% of nondiabetics. Over the age of 40 years old, 30% of people with diabetes have loss of sensation in their feet.

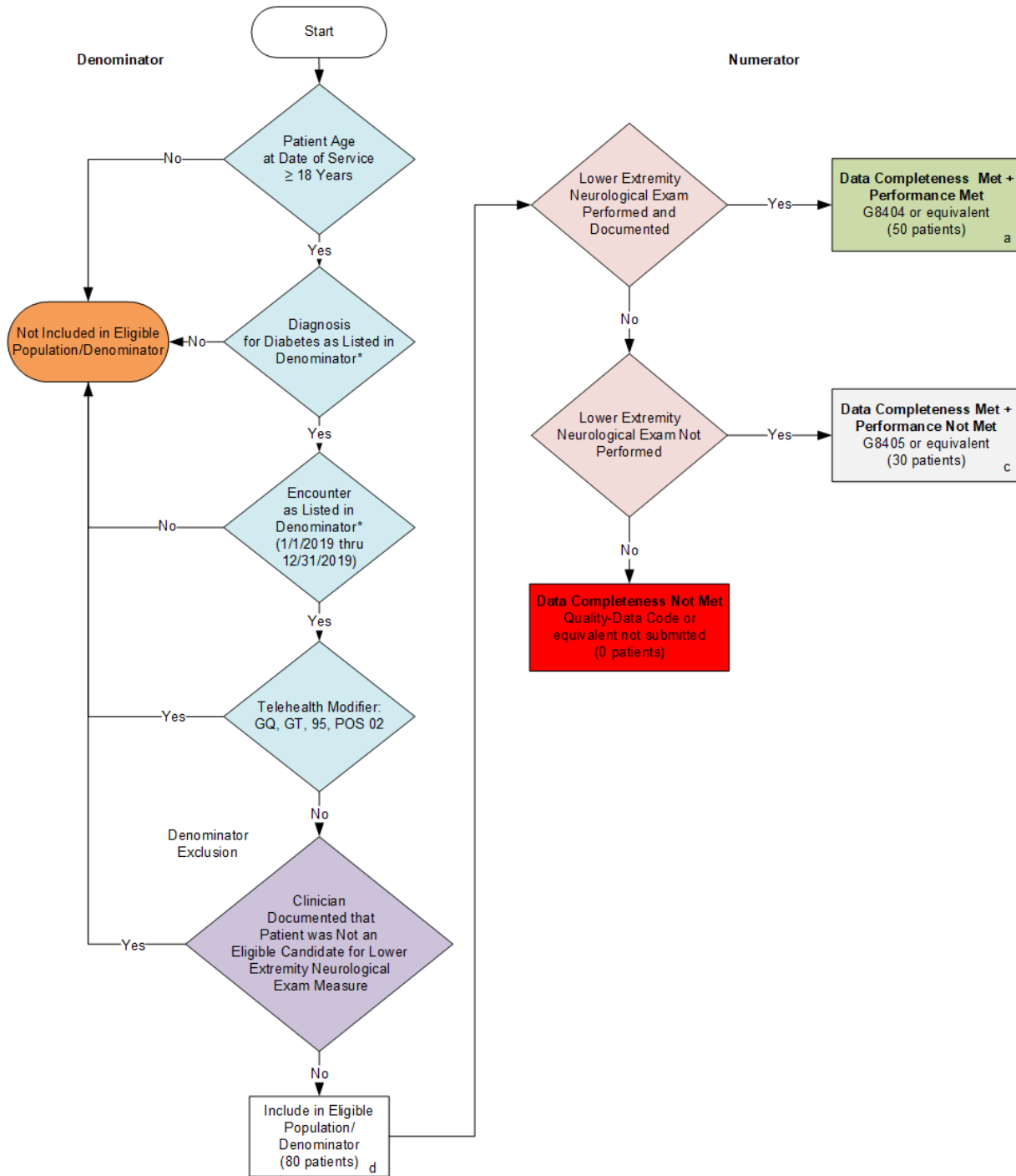
CLINICAL RECOMMENDATION STATEMENTS:

Recognizing important risk factors and making a logical, treatment-oriented assessment of the diabetic foot requires a consistent and thorough diagnostic approach using a common language. Without such a method, the practitioner is more likely to overlook vital information and to pay inordinate attention to less critical points in the evaluation. A useful examination will involve identification of key risk factors and assignment into appropriate risk category. Only then can an effective treatment plan be designed and implemented. (ACFAS/ACFAOM Clinical Practice Guidelines)

COPYRIGHT:

This measure is owned by the American Podiatric Medical Association (APMA).

**2019 Clinical Quality Measure Flow for Quality ID #126 NQF #0417:
Diabetes Mellitus: Diabetic Foot and Ankle Care, Peripheral Neuropathy – Neurological Evaluation**



*See the posted Measure Specification for specific coding and instructions to submit this measure.
NOTE: Submission Frequency: Patient-process

CPT only copyright 2018 American Medical Association. All rights reserved.
The measure diagrams were developed by CMS as a supplemental resource to be used in conjunction with the measure specifications. They should not be used alone or as a substitution for the measure specification.

**2019 Registry Flow for Quality ID #126 NQF #0417:
Diabetes Mellitus: Diabetic Foot and Ankle Care, Peripheral Neuropathy – Neurological Evaluation**

SAMPLE CALCULATIONS:

Data Completeness=

$$\frac{\text{Performance Met (a=50 patients)} + \text{Performance Not Met (c=30 patients)}}{\text{Eligible Population / Denominator (d=80 patients)}} = \frac{80 \text{ patients}}{80 \text{ patients}} = 100.00\%$$

Performance Rate=

$$\frac{\text{Performance Met (a=50 patients)}}{\text{Data Completeness Numerator (80 patients)}} = \frac{50 \text{ patients}}{80 \text{ patients}} = 62.50\%$$

*See the posted Measure Specification for specific coding and instructions to submit this measure.
NOTE: Submission Frequency: Patient-process

CPT only copyright 2018 American Medical Association. All rights reserved.

**2019 Clinical Quality Measure Flow Narrative for Quality ID #126 NQF #0417:
Diabetes Mellitus: Diabetic Foot and Ankle Care Peripheral Neuropathy – Neurological Evaluation**

Please refer to the specific section of the specification to identify the denominator and numerator information for use in submitting this Individual Specification.

1. Start with Denominator
2. Check Patient Age:
 - a. If Patient Age is greater than or equal to 18 Years at Date of Service equals No during the measurement period, do not include in Eligible Population. Stop Processing.
 - b. If Patient Age is greater than or equal to 18 Years at Date of Service equals Yes during the Measurement Period, proceed to check Patient Diagnosis.
3. Check Patient Diagnosis:
 - a. If Diagnosis for Diabetes as Listed in the Denominator equals No, do not include in Eligible Population. Stop Processing.
 - b. If Diagnosis for Diabetes as Listed in the Denominator equals Yes, proceed to check Encounter Performed.
4. Check Encounter Performed:
 - a. If Encounter as Listed in the Denominator equals No, do not include in Eligible Population. Stop Processing.
 - b. If Encounter as Listed in the Denominator equals Yes, proceed to check Telehealth Modifier.
5. Check Telehealth Modifier:
 - a. If Telehealth Modifier equals Yes, do not include in Eligible Population. Stop Processing.
 - b. If Telehealth Modifier equals No, proceed to check Eligible Clinician Documented That Patient Was Not an Eligible Candidate for Lower Extremity Neurological Exam.
6. Check Clinician Documented That Patient Was Not an Eligible Candidate for Lower Extremity Neurological Exam:
 - a. If Clinician Documented That Patient Was Not an Eligible Candidate for Lower Extremity Neurological Exam Measure equals No, include in Eligible Population.
 - b. If Clinician Documented That Patient Was Not an Eligible Candidate for Lower Extremity Neurological Exam Measure equals Yes, do not include in Eligible Population. Stop Processing.
7. Denominator Population:
 - a. Denominator Population is all Eligible Patients in the Denominator. Denominator is represented as Denominator in the Sample Calculation listed at the end of this document. Letter d equals 80 patients in the Sample Calculation.
8. Start Numerator

9. Check Lower Extremity Neurological Exam Performed and Documented:
 - a. If Lower Extremity Neurological Exam Performed and Documented equals Yes, include in Data Completeness Met and Performance Met.
 - b. Data Completeness Met and Performance Met letter is represented in the Data Completeness and Performance Rate in the Sample Calculation listed at the end of this document. Letter a equals 50 patients in the Sample Calculation.
 - c. If Lower Extremity Neurological Exam Performed and Documented equals No, proceed to check Lower Extremity Neurological Exam Not Performed.

10. Check Lower Extremity Neurological Exam Not Performed:
 - a. If Lower Extremity Neurological Exam Not Performed equals Yes, include in Data Completeness Met and Performance Not Met.
 - b. Data Completeness Met and Performance Not Met letter is represented in the Data Completeness in the Sample Calculation listed at the end of this document. Letter c equals 30 patients in the Sample Calculation.
 - c. If Lower Extremity Neurological Exam Not Performed equals No, proceed to check Data Completeness Not Met.

11. Check Data Completeness Not Met:
 - a. If Data Completeness Not Met, the Quality Data Code or equivalent was not submitted. 0 patients have been subtracted from the Data Completeness Numerator in the Sample Calculation.

SAMPLE CALCULATIONS:

Data Completeness=

$$\frac{\text{Performance Met (a=50 patients)} + \text{Performance Not Met (c=30 patients)}}{\text{Eligible Population / Denominator (d=80 patients)}} = \frac{80 \text{ patients}}{80 \text{ patients}} = 100.00\%$$

Performance Rate=

$$\frac{\text{Performance Met (a=50 patients)}}{\text{Data Completeness Numerator (80 patients)}} = \frac{50 \text{ patients}}{80 \text{ patients}} = 62.50\%$$