

Quality ID #303: Cataracts: Improvement in Patient's Visual Function within 90 Days Following Cataract Surgery
–
National Quality Strategy Domain: Person and Caregiver-Centered Experience and Outcomes
– **Meaningful Measure Area: Patient Reported Functional Outcomes**

2019 COLLECTION TYPE:
MIPS CLINICAL QUALITY MEASURES (CQMS)

MEASURE TYPE:
Patient Reported Outcome – High Priority

DESCRIPTION:
Percentage of patients aged 18 years and older who had cataract surgery and had improvement in visual function achieved within 90 days following the cataract surgery, based on completing a pre-operative and post-operative visual function survey

INSTRUCTIONS:
This measure is to be calculated **each time** a procedure for cataracts is performed during the performance period. This measure is intended to reflect the quality of services provided for the patient receiving cataract surgery.

Note: *This is an outcome measure and will be calculated solely using MIPS eligible clinician, group, or third party intermediary submitted data.*

- *For patients who receive the cataract surgical procedures specified in the denominator coding, it should be submitted whether or not the patient had improvement in visual function achieved within 90 days following the cataract surgery.*
- *Only procedures performed through **September 30** of the performance period are eligible for the denominator. This will allow the post-operative period to occur before third party intermediaries must submit data to CMS.*
- *It is the responsibility of the third party intermediary to collate and score the surveys.*

Measure Submission Type:
Measure data may be submitted by individual MIPS eligible clinicians, groups, or third party intermediaries. The listed denominator criteria are used to identify the intended patient population. The numerator options included in this specification are used to submit the quality actions as allowed by the measure. The quality-data codes listed do not need to be submitted by MIPS eligible clinicians, groups, or third party intermediaries that utilize this modality for submissions; however, these codes may be submitted for those third party intermediaries that utilize Medicare Part B claims data. For more information regarding Application Programming Interface (API), please refer to the Quality Payment Program (QPP) website.

DENOMINATOR:
All patients aged 18 years and older who had cataract surgery

Denominator Criteria (Eligible Cases):
Patients aged ≥ 18 years on date of encounter

AND

Patient procedure during the performance period (CPT): 66840, 66850, 66852, 66920, 66930, 66940, 66982, 66983, 66984

WITHOUT

Modifier: 55 or 56

NUMERATOR:

Patients 18 years and older who had improvement in visual function achieved within 90 days following cataract surgery, based on completing a pre-operative and post-operative visual function survey

NUMERATOR NOTE: Denominator Exception(s) are determined within 90 days of the date of the denominator eligible procedure.

Numerator Options:

Performance Met:

Improvement in visual function achieved within 90 days following cataract surgery (**G0913**)

OR

Denominator Exception:

Patient care survey was not completed by patient (**G0914**)

OR

Performance Not Met:

Improvement in visual function not achieved within 90 days following cataract surgery (**G0915**)

RATIONALE:

- 1) Scientific Basis for Measuring Visual Function Outcomes after Cataract Surgery.

Visual function has been described as having multiple components, including central near, intermediate, and distance visual acuity; peripheral vision; visual search; binocular vision; depth perception; contrast sensitivity; perception of color; adaptation; and visual processing speed. Visual function also can be measured in terms of functional disability caused by visual impairment. Many activities are affected by more than one of these visual components.

Health services researchers have increasingly emphasized function and quality of life as the outcomes of treatment that are most critical and applicable to the patient. As previously stated, the primary purpose in managing a patient with cataract is to improve functional vision and the quality of life. In well-designed observational studies, cataract surgery consistently has been shown to have a significant impact on vision-dependent function. The Cataract Patient Outcomes Research Team (PORT) reported that 90% of patients under-going first-eye cataract surgery noted improvement in functional status and satisfaction with vision. The Activities of Daily Vision Study of elderly patients with a high prevalence of coexisting ocular and medical diseases reported improved visual function in 80% of patients at 12 months after surgery. A National Cataract Study conducted in England of 1,139 patients who had cataract surgery found that preoperative functional impairment varied in relation to gender, age, and visual acuity. Men were more likely to have trouble with driving, glare, and employment, and women were more likely to have difficulties with activities of daily living and recreational activities. Studies have found that regardless of the preoperative visual acuity in the better eye, most patients reported improvement in their ability to perform visually dependent tasks after undergoing cataract surgery.

Several studies have reported an association between improved visual function after cataract surgery and improved health-related quality of life. Visual function plays an important role in physical function, particularly in terms of mobility. The loss of visual function in the elderly is associated with a decline in physical and mental functioning as well as in independence in activities of daily living, including night-time driving, daytime driving, community activities, and home activities. Elderly patients with visual impairment only (and no other physical or mental impairments) were 2.5 times as likely to experience functional decline as elderly patients without visual impairment.

Improved visual function following cataract surgery can ameliorate the progressive deterioration of quality of life seen in elderly patients. In a cohort of 464 patients 65 years old and older, cataract extraction improved visual function and health-related quality of life. Patients with an improvement in their Activities of Daily

Vision Scale (ADVS), a brief measure of vision-specific functional status, had from 10% to 59% less decline in nearly all Short Form (SF)-36 dimensions. The SF-36 is a generic global measure of multidimensional health-related quality of life. A nationally representative population of 7,114 persons who were 70 years old and older showed that limitations in vision correlated with decreased functional status. The unadjusted functional score of a person with reported poor vision was four times worse than the score for a person with excellent vision. This difference was comparable with the differences found in other chronic conditions such as arthritis. This relationship with vision persisted, even after adjustment for health, demographics, and economic status. Individuals who rated their vision as other than excellent reported worse functional status, even when controlled for the presence of other medical conditions, education, income, general health status, and other symptoms. By improving visual function, cataract surgery may play an important role in preserving overall functional status, reducing associated injuries and accidents, and preventing disability in at-risk elderly patients. An analysis of the Medical Outcomes Study found that having blurred vision more than once or twice a month has a significant impact on functional status and well-being, particularly on problems with work or other daily activities as a result of physical health. This impact was found to be greater than the impact of several other chronic conditions, such as hypertension, history of myocardial infarction, type 2 diabetes mellitus, indigestion, trouble urinating, and headache. In one study, patients planning to undergo cataract surgery assigned a mean preoperative preference value of 0.68 on a scale ranging from 0 to 1 (where 0 is death and 1 is excellent health), indicating that the visual impairment from cataracts had a substantial impact on their quality of life. Visual impairment is an important risk factor for falls and for hip fracture.

Specifically, the Study for Osteoporotic Fractures Research Group found that poor depth perception and decreased contrast sensitivity independently increased the risk of hip fracture.

Visual impairment, in particular a decrease of visual acuity and contrast sensitivity, has been shown to be associated with difficulties in driving. In one study, older drivers with visually significant cataract were twice as likely as older drivers without cataract to report reduction in days driven and four times as likely to report difficulties in challenging driving situations. Drivers with visually significant cataract were 2.5 times more likely to have had an at-fault involvement in a motor vehicle crash in the past 5 years compared with drivers without cataract. This association was significant, even after accounting for other factors such as impaired general health, age, mental status deficit or depression. In this study, visually significant cataract was determined by reviewing the participant's medical record and most recent eye examination by an eye care specialist. The study required that cataract in both eyes was the cause of the visual impairment, based on the medical record; an additional inclusion criterion was best-corrected visual acuity in one eye of 20/40 or worse. A further study in the same group demonstrated that drivers with a history of crash involvement were eight times more likely to have a serious contrast sensitivity deficit (defined as a Pelli-Robson score of 1.25 or less) in the worse eye than those who had no history of crash involvement. A severe contrast sensitivity deficit in only one eye was still significantly associated with crash involvement.

Binocular vision is better than the vision of a single eye. The simultaneous use of the two eyes is complex and requires the integration of disparate images from each eye. A study demonstrated that binocular vision resulted in better perception of form, color, and the relationship of the body to the environment, which facilitated manipulation, reaching, and balance, particularly under dim illumination. However, if the vision of one eye is reduced due to cataract, visual performance can fall below the level of monocular vision by a mechanism known as binocular inhibition, which reduces patients' visual acuity and contrast sensitivity. A study of the Framingham Study Cohort found that poor vision in one or both eyes was associated with an increased risk of hip fracture. It also found that patients with good vision in one eye and moderately impaired vision in the other eye had a higher risk of fracture than those with similar visual impairment in both eyes. A study of 150 patients before and after cataract surgery found that poor binocular visual acuity was related to more problems in activities of daily living. Another study, based on patients who reported no beneficial outcomes after first-eye cataract surgery in the National Swedish Cataract Outcome register, found that

anisometropia was the reason for the poor outcome in one-third of cases. These studies have shown that second-eye surgery is important to visual and physical function.

In summary, these studies demonstrate that physical function, emotional well-being, and overall quality of life can be enhanced when visual function is restored by cataract extraction.

Improved visual function as a result of cataract surgery includes the following:

- Better optically corrected vision.
- Better uncorrected vision with reduced spectacle dependence.
- Increased ability to read or do near work.
- Reduced glare.
- Improved ability to function in dim levels of light.
- Improved depth perception and binocular vision.
- Improved color vision.

Improved physical function as a critical outcome of cataract surgery includes the following:

- Increased ability to perform activities of daily living.
- Increased opportunity to continue or resume an occupation.
- Increased mobility (walking, driving).

Improved mental health and emotional well-being as a second critical outcome of cataract surgery includes the following benefits:

- Improved self-esteem and independence.
- Increased ability to avoid injury.
- Increased social contact and ability to participate in social activities.
- Relief from fear of blindness.

Most patients achieve improved visual function after cataract surgery. This outcome is achieved consistently through careful attention through the patient selection process, accurate measurement of axial length and corneal power, appropriate selection of an IOL power calculation formula, etc. As such, it reflects the care and diligence with which the surgery is assessed, planned and executed. Failure to achieve this after surgery would reflect patterns of patient selection or treatment that should be assessed for opportunities for improvement.

Sometimes cataract surgery is performed for other medical reasons other than to improve impaired visual function caused by cataract. These circumstances include the following: clinically significant anisometropia in the presence of a cataract; when the lens opacity interferes with optimal diagnosis or management of posterior segment conditions, when the lens causes inflammation (phacolysis, phacoanaphylaxis) and when the lens induces angle closure (phacomorphic or phacotopic). In these situations, improved visual function as a result of the removal of the cataract is not expected, because of the pre-existing comorbid conditions.

2) Evidence of a Gap in Care

This is an outcome of surgery indicator of direct relevance and import to patients, their families and referring providers. The available evidence suggests that cataract surgery achieves this in about 90% of patients. While the potential for improvement is seemingly small, the volume of cataract surgery in the U.S. of over 2.8 million surgeries means that the impact could affect more than 100,000 patients per year. Ideally, performance on this indicator would be as high as possible, with lower rates suggestive of opportunities for improvement.

3) Survey Methodology

The survey should be administered, collated and scored by the registry, or by a third party intermediary, to prevent or minimize bias which might be introduced if it is an in-office paper survey with questions asked by the office staff. Options would be provided to the patient, either online survey, mail survey or phone survey (third party intermediary or registry only), depending on their preferences and abilities. The measure requires the distribution of two surveys to each patient, a pre-operative survey and a post-operative survey. The pre-operative survey should reflect the patient's visual function prior to undergoing the cataract procedure. As such, the pre-operative survey must be distributed to patients before surgery.

4) Improvement in Visual Function

The strategy to identify improvement in visual function is as follows. The instrument proposed for visual function evaluation is the Rasch-scaled Short Version of the Visual Function-14, VF-8R. Reliability and validity testing have been performed on the VF-14 as well as the VF-8R. This instrument is scored on a scale of 0-100, with 0 indicating the lack of ability to perform functional activities and 100 indicating complete ability to perform functional activities. The difference between the pre-operative and post-operative scores on the VF-8R indicates a change in functional activities. Improvement in visual function would be defined as an increase in the visual function score between pre-operative and post-operative assessment on the VF-8R in the range of 3 points or greater.

CLINICAL RECOMMENDATION STATEMENTS:

This is an outcomes measure. As such, there are no recommendation statements in the guideline specific to this measurement topic.

COPYRIGHT:

These measures have been developed by the H. Dunbar Hoskins Jr. MD Center for Quality Eye Care of the American Academy of Ophthalmology. These measures rely on additional survey instruments that are owned and copyrighted by third parties. These measures are not clinical guidelines and do not establish a medical standard and have not been tested in all possible applications.

The Measures, while copyrighted, can be reproduced and distributed, without modification, for noncommercial purposes, eg, use by health care providers in connection with their practices. Commercial use is defined as the sale, license, or distribution of the Measures for commercial gain, or incorporation of the Measures into a product or service that is sold, licensed or distributed for commercial gain.

Commercial uses of the Measures require a license agreement between the user and the American Academy of Ophthalmology (AAO). The AAO nor its members shall be responsible for any use of the Measures.

AAO encourages use of the Measures by other health care professionals, where appropriate.

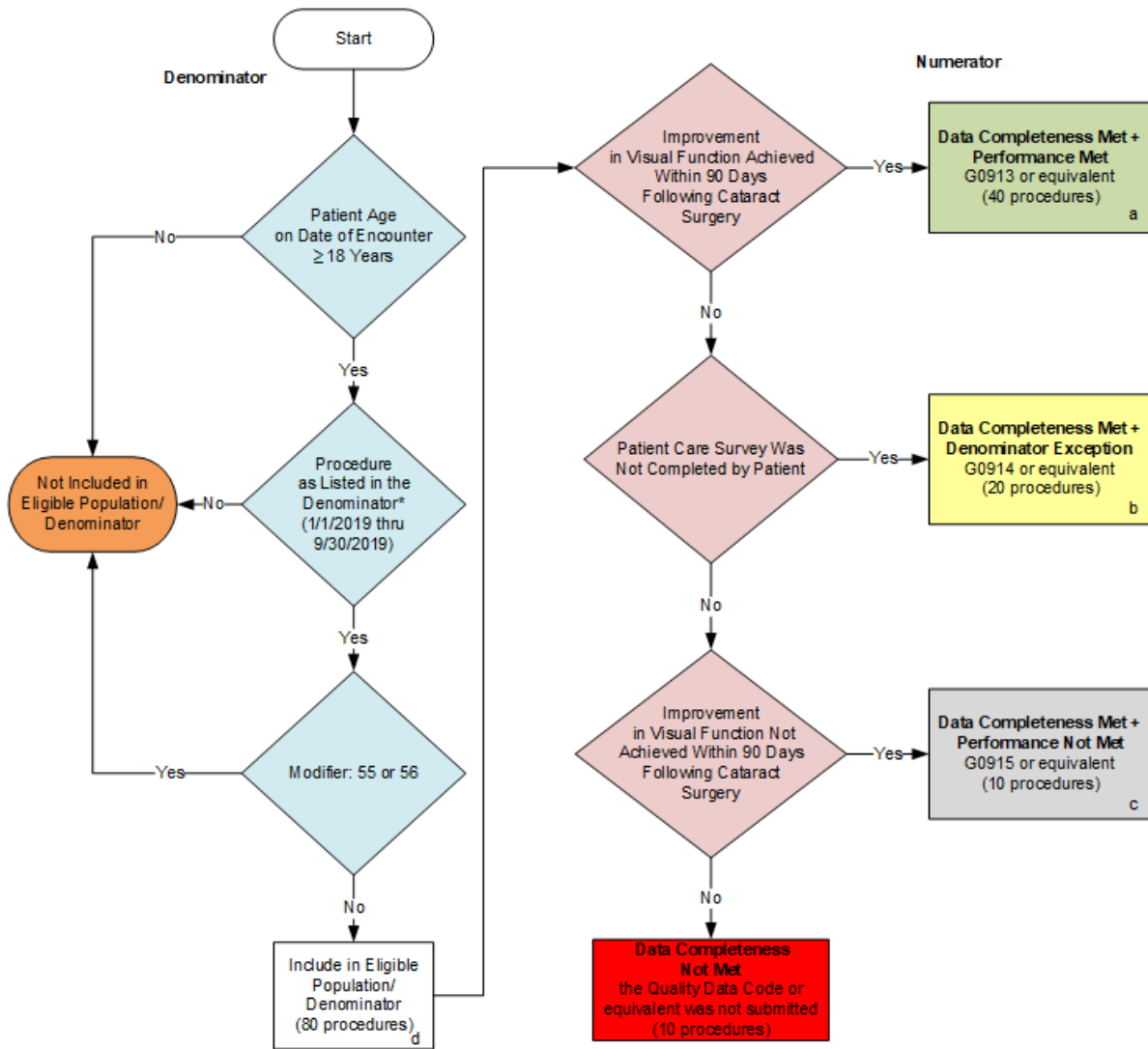
THESE MEASURES AND SPECIFICATIONS ARE PROVIDED "AS IS" WITHOUT WARRANTY OF ANY KIND.

© 2007 American Academy of Ophthalmology. All Rights Reserved.

Limited proprietary coding from Current Procedural Terminology (CPT®) is contained in the measure specifications. Users of this code set should obtain all necessary licenses. The Academy disclaims all liability for use or accuracy of the coding contained in these measure specifications.

CPT® contained in the Measures specifications is copyright 2004-2018 American Medical Association.

**2019 Clinical Quality Measure Flow for Quality ID #303 NQF #1536:
Cataracts: Improvement in Patient's Visual Function within 90 Days Following Cataract Surgery**



SAMPLE CALCULATIONS:

Data Completeness=
Performance Met (a=40 procedures) + Denominator Exception (b=20 procedures) + Performance Not Met (c=10 procedures) = 70 procedures = 87.50%
 Eligible Population / Denominator (d=80 procedures) = 80 procedures

Performance Rate=
Performance Met (a=40 procedures) = 40 procedures = 80.00%
 Data Completeness Numerator (70 procedures) – Denominator Exception (b=20 procedures) = 50 procedures

*See the posted Measure Specification for specific coding and instructions to submit this measure.
 NOTE : Submission Frequency- Procedure

CPT only copyright 2018 American Medical Association. All rights reserved.
 The measure diagrams were developed by CMS as a supplemental resource to be used in conjunction with the measure specifications. They should not be used alone or as a substitution for the measure specification.

**2019 Clinical Quality Measure Flow Narrative for Quality ID #303 NQF #1536:
Cataracts: Improvement in Patient's Visual Function within 90 Days Following Cataract Surgery**

Please refer to the specific section of the specification to identify the denominator and numerator information for use in submitting this Individual Specification.

1. Start with Denominator
2. Check Patient Age:
 - a. If Patient Age on Date of Encounter is greater than or equal to 18 Years equals No, do not include in Eligible Population. Stop Processing.
 - b. If Patient Age on Date of Encounter is greater than or equal to 18 Years equals Yes, proceed to check Procedure Performed.
3. Check Procedure Performed:
 - a. If Procedure as Listed in the Denominator equals No, do not include in Eligible Population. Stop Processing.
 - b. If Procedure as Listed in the Denominator equals Yes, proceed to check Modifier: 55 or 56.
4. Check Modifier: 55 or 56:
 - a. If Modifier: 55 or 56 equals Yes, do not include in Eligible Population. Stop Processing.
 - b. If Modifier: 55 or 56 equal No, include in Eligible Population.
5. Denominator Population:
 - a. Denominator Population is all Eligible Procedures in the Denominator. Denominator is represented as Denominator in the Sample Calculation listed at the end of this document. Letter d equals 80 procedures in the Sample Calculation.
6. Start Numerator
7. Check Improvement in Visual Function Achieved Within 90 Days Following Cataract Surgery:
 - a. If Improvement in Visual Function Achieved Within 90 Days Following Cataract Surgery equals Yes, include in Data Completeness Met and Performance Met.
 - b. Data Completeness Met and Performance Met letter is represented in the Data Completeness and Performance Rate in the Sample Calculation listed at the end of this document. Letter a equals 40 procedures in the Sample Calculation.
 - c. If Improvement in Visual Function Achieved Within 90 Days Following Cataract Surgery equals No, proceed to check Patient Care Survey Was Not Completed by Patient.
8. Check Patient Care Survey was Not Completed by Patient:
 - a. If Patient Care Survey Was Not Completed by Patient equals Yes, include in Data Completeness Met and Denominator Exception.

- b. Data Completeness Met and Denominator Exception letter is represented in the Data Completeness and Performance Rate in the Sample Calculation listed at the end of this document. Letter b equals 20 procedures in the Sample Calculation.
 - c. If Patient Care Survey Was Not Completed by Patient equals No, proceed to check Improvement in Visual Function Not Achieved Within 90 Days Following Cataract Surgery.
9. Check Improvement in Visual Function Not Achieved Within 90 Days Following Cataract Surgery:
- a. If Improvement in Visual Function Not Achieved Within 90 Days Following Cataract Surgery equals Yes, include in the Data Completeness Met and Performance Not Met.
 - b. Data Completeness Met and Performance Not Met letter is represented in the Data Completeness in the Sample Calculation listed at the end of this document. Letter c equals 10 procedures in the Sample Calculation.
 - c. If Improvement in Visual Function Not Achieved Within 90 Days Following Cataract Surgery equals No, proceed to check Data Completeness Not Met.
10. Check Data Completeness Not Met:
- a. If Data Completeness Not Met, the Quality Data Code or equivalent was not submitted. 10 procedures have been subtracted from the Data Completeness Numerator in the Sample Calculation.

SAMPLE CALCULATIONS:

Data Completeness=

$$\frac{\text{Performance Met (a=40 procedures) + Denominator Exception (b=20 procedures) + Performance Not Met (c=10 procedures)}}{\text{Eligible Population / Denominator (d=80 procedures)}} = \frac{70 \text{ procedures}}{80 \text{ procedures}} = 87.50\%$$

Performance Rate=

$$\frac{\text{Performance Met (a=40 procedures)}}{\text{Data Completeness Numerator (70 procedures) - Denominator Exception (b=20 procedures)}} = \frac{40 \text{ procedures}}{50 \text{ procedures}} = 80.00\%$$