

Quality ID #14 (NQF 0087): Age-Related Macular Degeneration (AMD): Dilated Macular Examination
– National Quality Strategy Domain: Effective Clinical Care
– Meaningful Measure Area: Management of Chronic Conditions

2020 COLLECTION TYPE:
MIPS CLINICAL QUALITY MEASURES (CQMS)

MEASURE TYPE:
Process

DESCRIPTION:
Percentage of patients aged 50 years and older with a diagnosis of age-related macular degeneration (AMD) who had a dilated macular examination performed which included documentation of the presence or absence of macular thickening or geographic atrophy or hemorrhage AND the level of macular degeneration severity during one or more office visits within the 12 month performance period.

INSTRUCTIONS:
This measure is to be submitted a minimum of **once per performance period** for patients seen during the performance period. It is anticipated that Merit-based Incentive Payment System (MIPS) eligible clinicians who provide the primary management of patients with age-related macular degeneration (in either one or both eyes) will submit this measure.

Measure Submission Type:
Measure data may be submitted by individual MIPS eligible clinicians, groups, or third-party intermediaries. The listed denominator criteria are used to identify the intended patient population. The numerator options included in this specification are used to submit the quality actions as allowed by the measure. The quality-data codes listed do not need to be submitted by MIPS eligible clinicians, groups, or third-party intermediaries that utilize this modality for submissions; however, these codes may be submitted for those third party intermediaries that utilize Medicare Part B claims data. For more information regarding Application Programming Interface (API), please refer to the Quality Payment Program (QPP) website.

DENOMINATOR:
All patients aged 50 years and older with a diagnosis of AMD

Denominator Criteria (Eligible Cases):
Patients aged ≥ 50 years on date of encounter

AND
Diagnosis for age-related macular degeneration (ICD-10-CM): H35.3110, H35.3111, H35.3112, H35.3113, H35.3114, H35.3120, H35.3121, H35.3122, H35.3123, H35.3124, H35.3130, H35.3131, H35.3132, H35.3133, H35.3134, H35.3210, H35.3211, H35.3212, H35.3213, H35.3220, H35.3221, H35.3222, H35.3223, H35.3230, H35.3231, H35.3232, H35.3233

AND
Patient encounter during the performance period (CPT): 92002, 92004, 92012, 92014, 99201, 99202, 99203, 99204, 99205, 99212, 99213, 99214, 99215, 99304, 99305, 99306, 99307, 99308, 99309, 99310, 99324, 99325, 99326, 99327, 99328, 99334, 99335, 99336, 99337

WITHOUT
Telehealth Modifier: GQ, GT, 95, POS 02

NUMERATOR:
Patients who had a dilated macular examination performed which included documentation of the presence or absence of macular thickening or geographic atrophy or hemorrhage AND the level of macular degeneration severity during one or more office visits within 12 months

Definitions:

Macular Thickening – Acceptable synonyms for “macular thickening” include: intraretinal thickening, serous detachment of the retina, pigment epithelial detachment or macular edema.

Severity of Macular Degeneration – Early, intermediate and advanced.

Geographic Atrophy – the advanced form of non-neovascular AMD, will have one or more zones of well-demarcated retinal pigment epithelial and/or choriocapillaris atrophy.

NUMERATOR NOTE: *Denominator Exception(s) are determined on or any date during the performance period prior to the date of the denominator eligible encounter.*

Numerator Options:

Performance Met:

Dilated macular exam performed, including documentation of the presence or absence of macular thickening or geographic atrophy or hemorrhage AND the level of macular degeneration severity (**G9974**)

OR

Denominator Exception:

Documentation of medical reason(s) for not performing a dilated macular examination (**G9975**)

OR

Denominator Exception:

Documentation of patient reason(s) for not performing a dilated macular examination (**G9892**)

OR

Performance Not Met:

Dilated macular exam was not performed, reason not otherwise specified (**G9893**)

RATIONALE:

A documented complete macular examination is a necessary prerequisite to determine the presence and severity of AMD, so that a decision can be made as to the benefits of prescribing antioxidant vitamins. Further, periodic assessment is necessary to determine whether there is progression of the disease and to plan the on-going treatment of the disease, since several therapies exist that reduce vision loss once the advanced “wet” form of AMD occurs. While no data exist on the frequency or absence of regular examinations of the macula for patients with AMD, parallel data for key structural assessments for glaucoma, cataract and diabetic retinopathy suggest that significant gaps are likely.

CLINICAL RECOMMENDATION STATEMENTS:

According to the American Academy of Ophthalmology, a physical examination should include stereoscopic biomicroscopic examination of the macula. (III; Good; Strong) Binocular slit-lamp biomicroscopy of the ocular fundus is often necessary to detect subtle clinical signs of CNV. (III; Good; Strong)

American Academy of Ophthalmology Retina/Vitreous Panel. Preferred Practice Pattern® Guidelines. Age-Related Macular Degeneration. San Francisco, CA: American Academy of Ophthalmology; 2015. Available at: [American Academy of Ophthalmology - Preferred Practice Pattern](#).

COPYRIGHT:

The measure is not clinical guidelines, does not establish a standard of medical care, and has not been tested for all potential applications.

The measure, while copyrighted, can be reproduced and distributed, without modification, for noncommercial purposes, eg, use by health care providers in connection with their practices. Commercial use is defined as the sale, license, or distribution of the measure for commercial gain, or incorporation of the measure into a product or service that is sold, licensed or distributed for commercial gain.

Commercial uses of the measure require a license agreement between the user and the American Academy of Ophthalmology (AAO). Neither the AAO, nor its members, shall be responsible for any use of the measure.

The American Medical Association's and PCPI® Foundation's significant past efforts and contributions to the development and updating of the measure is acknowledged. AAO is solely responsible for the review and enhancement ("Maintenance") of the measure as of May 15, 2014.

AAO encourages use of the measure by other health care professionals, where appropriate.

THE MEASURE AND SPECIFICATIONS ARE PROVIDED "AS IS" WITHOUT WARRANTY OF ANYKIND.

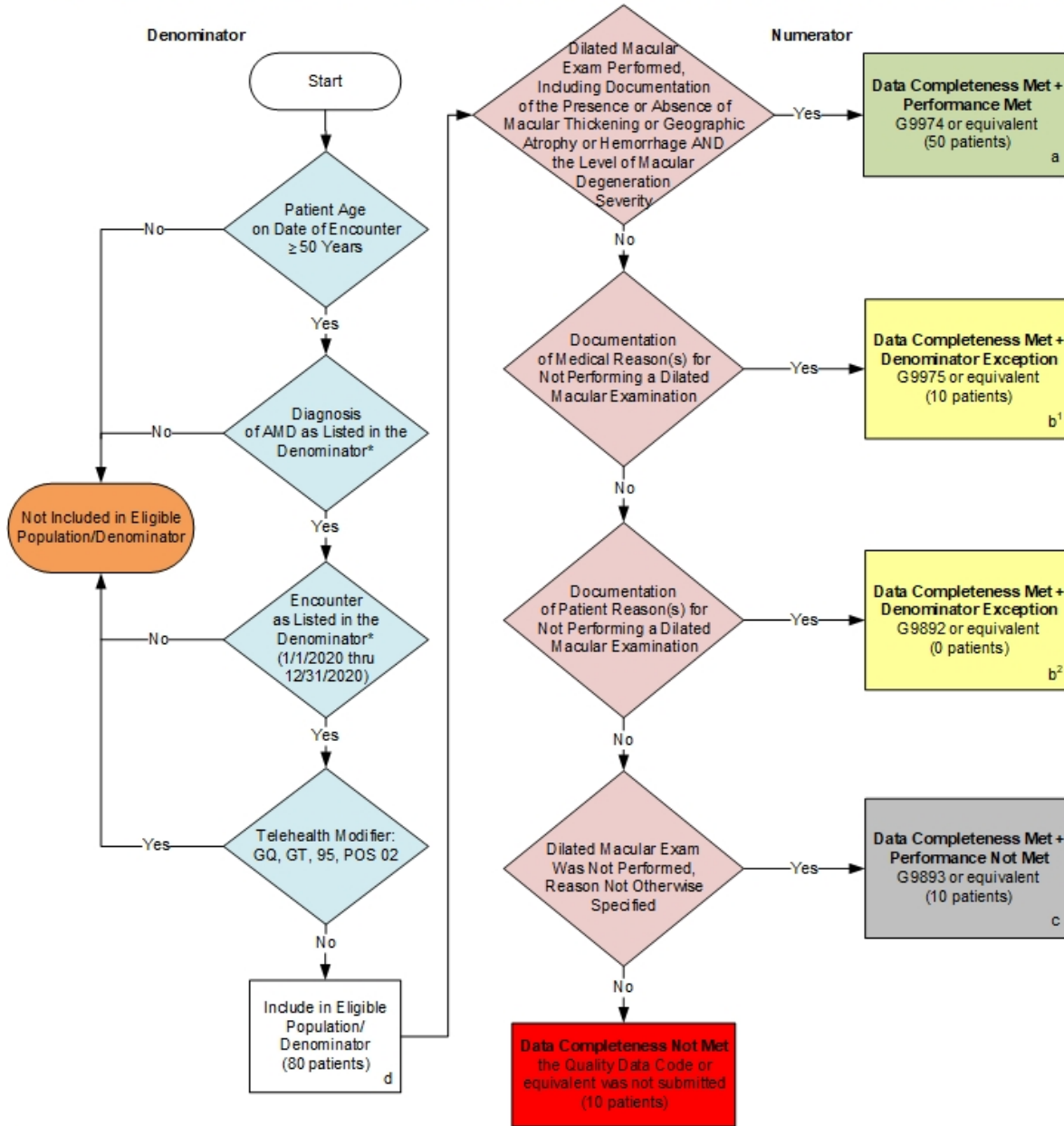
© 2006-2020 American Academy of Ophthalmology. All Rights Reserved. Applicable FARS/DFARS Restrictions Apply to Government Use.

Limited proprietary coding is contained in the measure specifications for convenience. Users of the proprietary code sets should obtain all necessary licenses from the owners of these code sets. The, AAO and its members disclaim all liability for use or accuracy of any Current Procedural Terminology (CPT®) or other coding contained in the specifications.

CPT® contained in the Measure specifications is copyright 2004-2019 American Medical Association. ICD-10 is copyright 2019 World Health Organization. All Rights Reserved.

**2020 Clinical Quality Measure Flow for Quality ID #14 NQF #0087:
Age-Related Macular Degeneration (AMD): Dilated Macular Examination**

Disclaimer: Refer to the measure specification for specific coding and instructions to submit this measure.



SAMPLE CALCULATIONS:

Data Completeness=
Performance Met (a=50 patients) + Denominator Exception (b¹+b²=10 patients) + Performance Not Met (c=10 patients) = 70 patients = 87.50%
 Eligible Population / Denominator (d=80 patients) = 80 patients

Performance Rate=
 $\frac{\text{Performance Met (a=50 patients)}}{\text{Data Completeness Numerator (70 patients) - Denominator Exception (b¹+b²=10 patients)}} = \frac{50 \text{ patients}}{60 \text{ patients}} = 83.33\%$

*See the posted measure specification for specific coding and instructions to submit this measure.

NOTE: Submission Frequency: Patient-Process

CPT only copyright 2019 American Medical Association. All rights reserved.
 The measure diagrams were developed by CMS as a supplemental resource to be used in conjunction with the measure specifications. They should not be used alone or as a substitution for the measure specification.

v4

**2020 Clinical Quality Measure Flow Narrative for Quality ID #14 NQF #0087:
Age-Related Macular Degeneration (AMD): Dilated Macular Examination**

Disclaimer: Refer to the measure specification for specific coding and instructions to submit this measure.

1. Start with Denominator
2. Check Patient Age on Date of Encounter:
 - a. If Patient Age on Date of Encounter is greater than or equal to 50 Years equals No, do not include in Eligible Population. Stop Processing.
 - b. If Patient Age on Date of Encounter is greater than or equal to 50 Years equals Yes, proceed to check Patient Diagnosis.
3. Check Patient Diagnosis:
 - a. If Diagnosis of AMD as Listed in the Denominator equals No, do not include in Eligible Population. Stop Processing.
 - b. If Diagnosis of AMD as Listed in the Denominator equals Yes, proceed to check Encounter Performed.
4. Check Encounter Performed:
 - a. If Encounter as Listed in the Denominator equals No, do not include in Eligible Population. Stop Processing.
 - b. If Encounter as Listed in the Denominator equals Yes, include in the Eligible Population.
5. Check Telehealth Modifier:
 - a. If Telehealth Modifier equals Yes, do not include in Eligible Population. Stop Processing.
 - b. If Telehealth Modifier equals No, include in Eligible Population.
6. Denominator Population:
 - a. Denominator Population is all Eligible Patients in the Denominator. Denominator is represented as Denominator in the Sample Calculation listed at the end of this document. Letter d equals 80 patients in the Sample Calculation.
7. Start Numerator
8. Check Dilated Macular Exam Performed, Including Documentation of the Presence or Absence of Macular Thickening or Geographic Atrophy or Hemorrhage AND the Level of Macular Degeneration Severity:
 - a. If Dilated Macular Exam Performed, Including Documentation of the Presence or Absence of Macular Thickening or Geographic Atrophy or Hemorrhage AND the Level of Macular Degeneration Severity equals Yes, include in Data Completeness Met and Performance Met.
 - b. Data Completeness Met and Performance Met letter is represented in the Data Completeness and Performance Rate in the Sample Calculation listed at the end of this document. Letter a equals 50 patients in the Sample Calculation.
 - c. If Dilated Macular Exam Performed, Including Documentation of the Presence or Absence of Macular Thickening or Geographic Atrophy or Hemorrhage AND the Level of Macular Degeneration Severity

equals No, proceed to check Documentation of Medical Reason(s) for Not Performing a Dilated Macular Examination.

9. Check Documentation of Medical Reason(s) for Not Performing a Dilated Macular Examination:
 - a. If Documentation of Medical Reason(s) for Not Performing a Dilated Macular Examination equals Yes, include in Data Completeness Met and Denominator Exception.
 - b. Data Completeness Met and Denominator Exception letter is represented in the Data Completeness and Performance Rate in the Sample Calculation listed at the end of this document. Letter b¹ equals 10 patients in the Sample Calculation.
 - c. If Documentation of Medical Reason(s) for Not Performing a Dilated Macular Examination equals No, proceed to check Documentation of Patient Reason(s) for Not Performing a Dilated Macular Examination.
10. Check Documentation of Patient Reason(s) for Not Performing a Dilated Macular Examination:
 - a. If Documentation of Patient Reason(s) for Not Performing a Dilated Macular Examination equals Yes, include in Data Completeness Met and Denominator Exception.
 - b. Data Completeness Met and Denominator Exception letter is represented in the Data Completeness and Performance Rate in the Sample Calculation listed at the end of this document. Letter b² equals 0 patients in the Sample Calculation.
 - c. If Documentation of Patient Reason(s) for Not Performing a Dilated Macular Examination equals No, proceed to check Dilated Macular Exam Was Not Performed, Reason Not Otherwise Specified.
11. Check Dilated Macular Examination Was Not Performed, Reason Not Otherwise Specified:
 - a. If Dilated Macular Examination Was Not Performed, Reason Not Otherwise Specified equals Yes, include in the Data Completeness Met and Performance Not Met.
 - b. Data Completeness Met and Performance Not Met letter is represented in the Data Completeness in the Sample Calculation listed at the end of this document. Letter c equals 10 patients in the Sample Calculation.
 - c. If Dilated Macular Examination Was Not Performed, Reason Not Otherwise Specified equals No, proceed to check Data Completeness Not Met.
12. Check Data Completeness Not Met:
 - a. If Data Completeness Not Met, the Quality Data Code or equivalent was not submitted. 10 patients have been subtracted from the Data Completeness Numerator in the Sample Calculation.

SAMPLE CALCULATION S:

Data Completeness=

$$\frac{\text{Performance Met (a=50 patients) + Denominator Exception (b}^1\text{+b}^2\text{=10 patients) + Performance Not Met (c=10 patients)}}{\text{Eligible Population / Denominator (d=80 patients)}} = \frac{70 \text{ patients}}{80 \text{ patients}} = 87.50\%$$

Performance Rate=

$$\frac{\text{Performance Met (a=50 patients)}}{\text{Data Completeness Numerator (70 patients) – Denominator Exception (b}^1\text{+b}^2\text{=10 patients)}} = \frac{50 \text{ patients}}{60 \text{ patients}} = 83.33\%$$