

Quality ID #277: Sleep Apnea: Severity Assessment at Initial Diagnosis
– National Quality Strategy Domain: Effective Clinical Care
– Meaningful Measure Area: Management of Chronic Conditions

2020 COLLECTION TYPE:
MIPS CLINICAL QUALITY MEASURES (CQMS)

MEASURE TYPE:
Process

DESCRIPTION:
Percentage of patients aged 18 years and older with a diagnosis of obstructive sleep apnea who had an apnea hypopnea index (AHI) or a respiratory disturbance index (RDI) measured at the time of initial diagnosis

INSTRUCTIONS:
This measure is to be submitted a minimum of **once per performance period** for patients with a diagnosis of sleep apnea seen during the performance period. This measure may be submitted by Merit-based Incentive Payment System (MIPS) eligible clinicians who perform the quality actions described in the measure based on the services provided and the measure-specific denominator coding.

Measure Submission Type:
Measure data may be submitted by individual MIPS eligible clinicians, groups, or third party intermediaries. The listed denominator criteria are used to identify the intended patient population. The numerator options included in this specification are used to submit the quality actions as allowed by the measure. The quality-data codes listed do not need to be submitted by MIPS eligible clinicians, groups, or third party intermediaries that utilize this modality for submissions; however, these codes may be submitted for those third party intermediaries that utilize Medicare Part B claims data. For more information regarding Application Programming Interface (API), please refer to the Quality Payment Program (QPP) website.

DENOMINATOR:
All patients aged 18 years and older with an initial diagnosis of sleep apnea

DENOMINATOR NOTE: *Denominator eligible encounters only include those where the initial diagnosis of sleep apnea is present in the medical documentation or it is the MIPS eligible clinician's first encounter with a patient diagnosed with sleep apnea as represented in the coding below.*

Denominator Criteria (Eligible Cases):
Patients aged ≥ 18 years on date of encounter
AND
Diagnosis for sleep apnea (ICD-10-CM): G47.30, G47.33

AND
Patient encounter during the performance period (CPT): 99201, 99202, 99203, 99204, 99205, 99211, 99212, 99213, 99214, 99215, 99304, 99305, 99306, 99307, 99308, 99309, 99310, 99324, 99325, 99326, 99327, 99328, 99334, 99335, 99336, 99337, 99341, 99342, 99343, 99344, 99345, 99347, 99348, 99349, 99350

WITHOUT
Telehealth Modifier: GQ, GT, 95, POS 02
AND
Encounter corresponds to initial diagnosis of sleep apnea or first contact with sleep apnea diagnosed patient

NUMERATOR:

Patients who had an apnea hypopnea index (AHI) or a respiratory disturbance index (RDI) measured at the time of initial diagnosis

Definitions:

Apnea-Hypopnea Index (AHI) - for polysomnography performed in a sleep lab is defined as (Total Apneas + Hypopneas per hour of sleep); Apnea-Hypopnea Index (AHI) for a home sleep study is defined as (Total Apneas + Hypopneas per hour of monitoring).

Respiratory Disturbance Index (RDI) - is defined as (Total Apneas + Hypopneas + Respiratory Effort Related Arousals per hour of sleep).

NUMERATOR NOTE: *The quality-data codes below should be used for assessment of a MIPS eligible clinician's actions either at the time sleep apnea is initially diagnosed or at the initial encounter with a patient previously diagnosed with sleep apnea.*

Numerator Options:

Performance Met:

Apnea hypopnea index (AHI) or respiratory disturbance index (RDI) measured at the time of initial diagnosis **(G8842)**

OR

Denominator Exception:

Documentation of reason(s) for not measuring an apnea hypopnea index (AHI) or a respiratory disturbance index (RDI) at the time of initial diagnosis (e.g., psychiatric disease, dementia, patient declined, financial, insurance coverage, test ordered but not yet completed) **(G8843)**

OR

Performance Not Met:

Apnea hypopnea index (AHI) or respiratory disturbance index (RDI) not measured at the time of initial diagnosis, reason not given **(G8844)**

RATIONALE:

For patients with obstructive sleep apnea (OSA), the desired outcome of treatment includes the resolution of the clinical signs and symptoms of OSA and the normalization of the apnea hypopnea index (AHI) and oxyhemoglobin saturation. Physicians treating patients with OSA should calculate the patient's level of severity, which informs risk for other co-morbid conditions and complications. Numerous Level 1 and Level 2 studies have shown that the risk of cardiovascular complications is established for patients with an AHI over 15 (Kushida et al, 2005). Patients with a respiratory disturbance index equal to or greater than 15 are considered to have moderate to severe OSA and should be treated with positive airway pressure therapy.

CLINICAL RECOMMENDATION STATEMENTS:

Moderate sleep apnea is defined as having an RDI of equal to or greater than 15, but less than 30 episodes per hour of sleep; severe sleep apnea is defined as having an RDI equal to or greater than 30 episodes per hour of sleep. These patients are at higher risk for severe cardiovascular diseases and other co-morbid conditions (Kushida et al, 2006). Polysomnography is indicated for positive airway pressure (PAP) titration in patients with sleep related breathing disorders (Level 1). PSG with CPAP titration is appropriate for patients with any of the following results: a) an RDI of at least 15 per hour, regardless of the patient's symptoms; b) an RDI of at least 5 per hour in a patient with excessive daytime sleepiness. (Kushida et al, 2005)

COPYRIGHT:

The Measures are not clinical guidelines, do not establish a standard of medical care, and have not been tested for all potential applications.

The Measures, while copyrighted, can be reproduced and distributed, without modification, for noncommercial purposes, e.g., use by health care providers in connection with their practices. Commercial use is defined as the sale, license, or distribution of the Measures for commercial gain, or incorporation of the Measures into a product or service that is sold, licensed or distributed for commercial gain.

Commercial uses of the Measures require a license agreement between the user and the American Medical Association (AMA), [on behalf of the Physician Consortium for Performance Improvement® (PCPI®)] or American Academy of Sleep Medicine (AASM). Neither the AMA, AASM, PCPI, nor its members shall be responsible for any use of the Measures.

The AMA's, PCPI's and National Committee for Quality Assurance's significant past efforts and contributions to the development and updating of the Measures is acknowledged. AASM is solely responsible for the review and enhancement ("Maintenance") of the Measures as of August 7, 2014.

AASM encourages use of the Measures by other health care professionals, where appropriate.

THE MEASURES AND SPECIFICATIONS ARE PROVIDED "AS IS" WITHOUT WARRANTY OF ANY KIND.

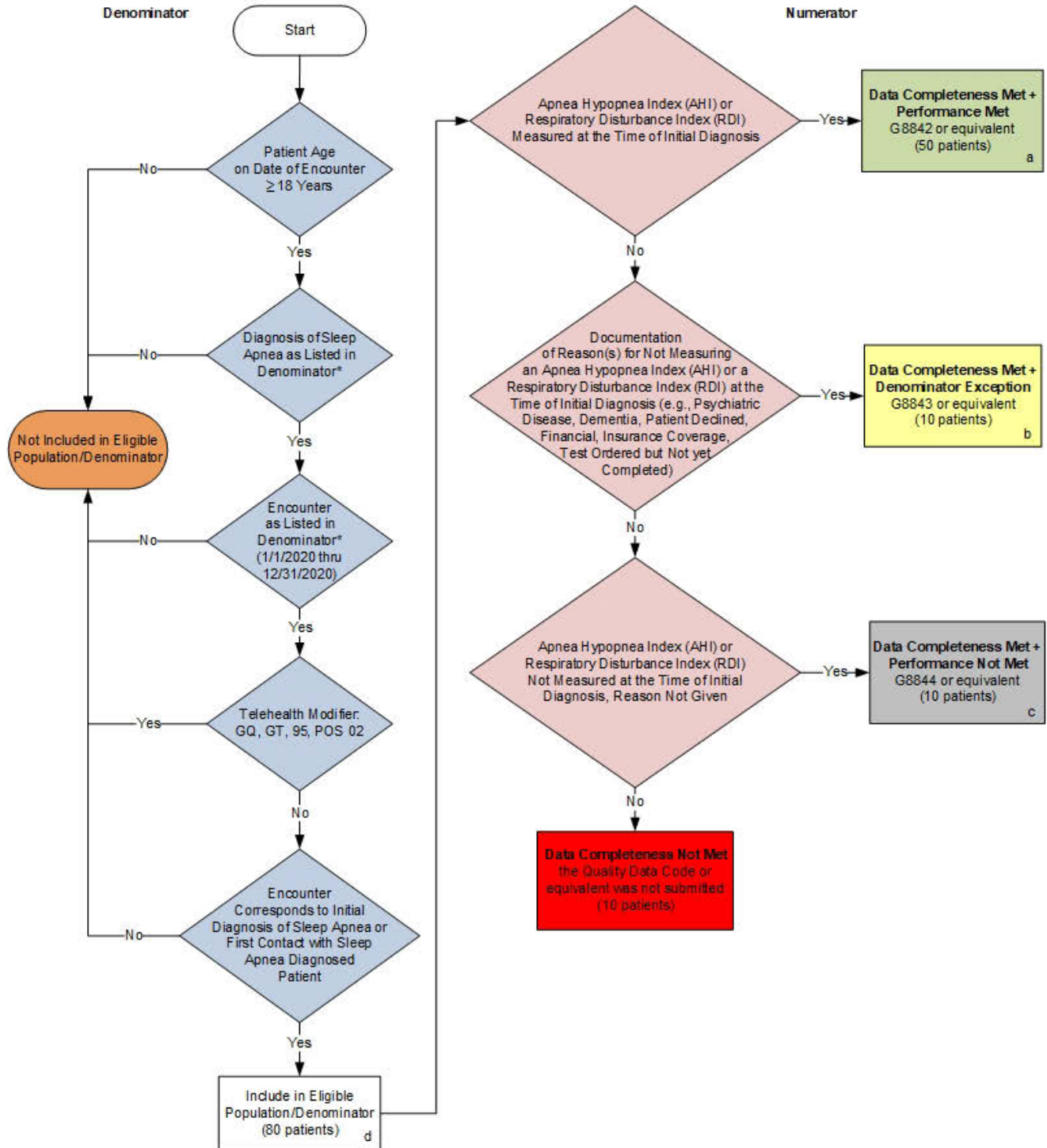
© 2016 American Medical Association and American Academy of Sleep Medicine. All Rights Reserved. Applicable FARS/DFARS Restrictions Apply to Government Use.

Limited proprietary coding is contained in the Measure specifications for convenience. Users of the proprietary code sets should obtain all necessary licenses from the owners of these code sets. The AMA, AASM, the PCPI and its members disclaim all liability for use or accuracy of any Current Procedural Terminology (CPT®) or other coding contained in the specifications.

CPT® contained in the Measure specifications is copyright 2004-2019 American Medical Association. LOINC® copyright 2004-2019 Regenstrief Institute, Inc. SNOMED CLINICAL TERMS (SNOMED CT®) copyright 2004-2019 College of American Pathologists. ICD-10 is copyright 2019 World Health Organization. All Rights Reserved.

2020 Clinical Quality Measure Flow for Quality ID #277: Sleep Apnea: Severity Assessment at Initial Diagnosis

Disclaimer: Refer to the measure specification for specific coding and instructions to submit this measure.



SAMPLE CALCULATIONS:

Data Completeness=

$$\frac{\text{Performance Met (a=50 patients)} + \text{Denominator Exception (b=10 patients)} + \text{Performance Not Met (c=10 patients)}}{\text{Eligible Population / Denominator (d=80 patients)}} = \frac{70 \text{ patients}}{80 \text{ patients}} = 87.50\%$$

Performance Rate=

$$\frac{\text{Performance Met (a=50 patients)}}{\text{Data Completeness Numerator (70 patients) - Denominator Exception (b=10 patients)}} = \frac{50 \text{ patients}}{60 \text{ patients}} = 83.33\%$$

*See the posted measure specification for specific coding and instructions to submit this measure.

NOTE: Submission Frequency: Patient-Process

CPT only copyright 2019 American Medical Association. All rights reserved.
The measure diagrams were developed by CMS as a supplemental resource to be used in conjunction with the measure specifications. They should not be used alone or as a substitution for the measure specification.

v4

**2020 Clinical Quality Measure Flow Narrative for Quality ID #277:
Sleep Apnea: Severity Assessment at Initial Diagnosis**

***Disclaimer:** Refer to the measure specification for specific coding and instructions to submit this measure.*

1. Start with Denominator
2. Check Patient Age:
 - a. If Patient Age is greater than or equal to 18 Years on Date of Encounter equals No during the measurement period, do not include in Eligible Population. Stop Processing.
 - b. If Patient Age is greater than or equal to 18 Years on Date of Encounter equals Yes during the measurement period, proceed to check Patient Diagnosis.
3. Check Patient Diagnosis:
 - a. If Diagnosis of Sleep Apnea as Listed in the Denominator equals No, do not include in Eligible Population. Stop Processing.
 - b. If Diagnosis of Sleep Apnea as Listed in the Denominator equals Yes, proceed to check Encounter Performed.
4. Check Encounter Performed:
 - a. If Encounter as Listed in the Denominator equals No, do not include in Eligible Population. Stop Processing.
 - b. If Encounter as Listed in the Denominator equals Yes, proceed to check Telehealth Modifier.
5. Check Telehealth Modifier:
 - a. If Telehealth Modifier equals Yes, do not include in Eligible Population. Stop Processing.
 - b. If Telehealth Modifier equals No, proceed to check Encounter Corresponds to Initial Diagnosis of Sleep Apnea or First Contact with Sleep Apnea Diagnosed Patient.
6. Check Encounter Corresponds to Initial Diagnosis of Sleep Apnea or First Contact with Sleep Apnea Diagnosed Patient:
 - a. If Encounter Corresponds to Initial Diagnosis of Sleep Apnea or First Contact with Sleep Apnea Diagnosed Patient equals No, do not include in Eligible Population. Stop Processing.
 - b. If Encounter Corresponds to Initial Diagnosis of Sleep Apnea or First Contact with Sleep Apnea Diagnosed Patient equals Yes, include in Eligible Population.
7. Denominator Population:
 - a. Denominator Population is all Eligible Patients in the Denominator. Denominator is represented as Denominator in the Sample Calculation listed at the end of this document. Letter d equals 80 patients in the Sample Calculation.
8. Start Numerator
9. Check Apnea Hypopnea Index (AHI) or Respiratory Disturbance Index (RDI) Measured at the Time of Initial Diagnosis:

- a. If Apnea Hypopnea Index (AHI) or Respiratory Disturbance Index (RDI) Measured at the Time of Initial Diagnosis equals Yes, include in Data Completeness Met and Performance Met.
 - b. Data Completeness Met and Performance Met letter is represented in the Data Completeness and Performance Rate in the Sample Calculation listed at the end of this document. Letter a equals 50 patients in the Sample Calculation.
 - c. If Apnea Hypopnea Index (AHI) or Respiratory Disturbance Index (RDI) Measured at the Time of Initial Diagnosis equals No, proceed to check Documentation of Reason(s) for Not Measuring an Apnea Hypopnea Index (AHI) or a Respiratory Disturbance Index (RDI) at the Time of Initial Diagnosis (e.g., Psychiatric Disease, Dementia, Patient Declined, Financial, Insurance Coverage, Test Ordered but Not yet Completed).
10. Check Documentation of Reason(s) for Not Measuring an Apnea Hypopnea Index (AHI) or a Respiratory Disturbance Index (RDI) at the Time of Initial Diagnosis (e.g., Psychiatric Disease, Dementia, Patient Declined, Financial, Insurance Coverage, Test Ordered but Not yet Completed):
- a. If Documentation of Reason(s) for Not Measuring an Apnea Hypopnea Index (AHI) or a Respiratory Disturbance Index (RDI) at the Time of Initial Diagnosis (e.g., Psychiatric Disease, Dementia, Patient Declined, Financial, Insurance Coverage, Test Ordered but Not yet Completed) equals Yes, include in Data Completeness Met and Denominator Exception.
 - b. Data Completeness Met and Denominator Exception letter is represented in the Data Completeness and Performance Rate in the Sample Calculation listed at the end of this document. Letter b equals 10 patients in the Sample Calculation.
 - c. If Documentation of Reason(s) for Not Measuring an Apnea Hypopnea Index (AHI) or a Respiratory Disturbance Index (RDI) at the Time of Initial Diagnosis (e.g., Psychiatric Disease, Dementia, Patient Declined, Financial, Insurance Coverage, Test Ordered but Not yet Completed) equals No, proceed to check Apnea Hypopnea Index (AHI) or Respiratory Disturbance Index (RDI) Not Measured at the Time of Initial Diagnosis, Reason Not Given.
11. Check Apnea Hypopnea Index (AHI) or Respiratory Disturbance Index (RDI) Not Measured at the Time of Initial Diagnosis, Reason Not Given:
- a. If Apnea Hypopnea Index (AHI) or Respiratory Disturbance Index (RDI) Not Measured at the Time of Initial Diagnosis, Reason Not Given equals Yes, include in Data Completeness Met and Performance Not Met.
 - b. Data Completeness Met and Performance Not Met letter is represented in the Data Completeness in the Sample Calculation listed at the end of this document. Letter c equals 10 patients in the Sample Calculation.
 - c. If Apnea Hypopnea Index (AHI) or Respiratory Disturbance Index (RDI) Not Measured at the Time of Initial Diagnosis, Reason Not Given equals No, proceed to check Data Completeness Not Met.
12. Check Data Completeness Not Met:
- a. If Data Completeness Not Met, the Quality Data Code or equivalent was not submitted. 10 patients have been subtracted from the Data Completeness Numerator in the Sample Calculation

SAMPLE CALCULATION S:

Data Completeness=

$$\frac{\text{Performance Met (a=50 patients) + Denominator Exception (b=10 patients) + Performance Not Met (c=10 patients)}}{\text{Eligible Population / Denominator (d=80 patients)}} = \frac{70 \text{ patients}}{80 \text{ patients}} = 87.50\%$$

Performance Rate=

$$\frac{\text{Performance Met (a=50 patients)}}{\text{Data Completeness Numerator (70 patients) - Denominator Exception (b=10 patients)}} = \frac{50 \text{ patients}}{60 \text{ patients}} = 83.33\%$$