

Quality ID #360: Optimizing Patient Exposure to Ionizing Radiation: Count of Potential High Dose Radiation Imaging Studies: Computed Tomography (CT) and Cardiac Nuclear Medicine Studies
– National Quality Strategy Domain: Patient Safety
– Meaningful Measure Area: Transfer of Health Information and Interoperability

2020 COLLECTION TYPE:
MIPS CLINICAL QUALITY MEASURES (CQMS)

MEASURE TYPE:
Process – High Priority

DESCRIPTION:
Percentage of computed tomography (CT) and cardiac nuclear medicine (myocardial perfusion studies) imaging reports for all patients, regardless of age, that document a count of known previous CT (any type of CT) and cardiac nuclear medicine (myocardial perfusion) studies that the patient has received in the 12-month period prior to the current study

INSTRUCTIONS:
This measure is to be submitted **each time** a procedure for a CT imaging report is performed during the performance period. There is no diagnosis associated with this measure. This measure may be submitted by Merit-based Incentive Payment System (MIPS) eligible clinicians who perform the quality actions described in the measure based on the services provided and the measure-specific denominator coding.

Measure Submission Type:
Measure data may be submitted by individual MIPS eligible clinicians, groups, or third party intermediaries. The listed denominator criteria are used to identify the intended patient population. The numerator options included in this specification are used to submit the quality actions as allowed by the measure. The quality-data codes listed do not need to be submitted by MIPS eligible clinicians, groups, or third party intermediaries that utilize this modality for submissions; however, these codes may be submitted for those third party intermediaries that utilize Medicare Part B claims data. For more information regarding Application Programming Interface (API), please refer to the Quality Payment Program (QPP) website.

DENOMINATOR:
All final reports for patients, regardless of age, undergoing a CT procedure

DENOMINATOR NOTE: *Signifies that this CPT Category I code is a non-covered service under the Medicare Part B Physician Fee Schedule (PFS). These non-covered services should be counted in the denominator population for MIPS CQMs.

Denominator Criteria (Eligible Cases):

All patients regardless of age

AND

Patient procedure during the performance period (CPT): 70450, 70460, 70470, 70480, 70481, 70482, 70486, 70487, 70488, 70490, 70491, 70492, 70496, 70498, 71250, 71260, 71270, 71275, 72125, 72126, 72127, 72128, 72129, 72130, 72131, 72132, 72133, 72191, 72192, 72193, 72194, 73200, 73201, 73202, 73206, 73700, 73701, 73702, 73706, 74150, 74160, 74170, 74174, 74175, 74176, 74177, 74178, 74261, 74262, 74263*, 75571, 75572, 75573, 75574, 75635, 76380, 76497, 77011, 77012, 77014, 77013, 77078, 78072, 78451, 78452, 78453, 78454, 78491, 78492, 0042T, G0297

NUMERATOR:

CT and cardiac nuclear medicine (myocardial perfusion studies) imaging reports that document a count of known previous CT (any type of CT) and cardiac nuclear medicine (myocardial perfusion) studies that the patient has received in the 12-month period prior to the current study

Numerator Instructions:

Physicians will need to document in the final report all known previous CT and cardiac nuclear medicine (myocardial perfusion) studies the patient has received in the 12-month period prior to the current study as a count that includes studies from the Radiology Information System, patient-provided radiological history or other source.

Numerator Options:

Performance Met:

Count of previous CT (any type of CT) and cardiac nuclear medicine (myocardial perfusion) studies documented in the 12-month period prior to the current study **(G9321)**

OR

Performance Not Met:

Count of previous CT and cardiac nuclear medicine (myocardial perfusion) studies not documented in the 12-month period prior to the current study, reason not given **(G9322)**

RATIONALE:

Increased CT use has resulted in growing rates of repeat or multiple imaging. (Griffey RT, Sodickson A, 2009)

Physicians may lack important information that could inform their decisions in ordering imaging exams that use ionizing radiation. Ordering physicians may not have access to patients' medical imaging or radiation dose history. Due to insufficient information, physicians may unnecessarily order imaging procedures that have already been conducted. (US Food and Drug Administration, 2010)

CLINICAL RECOMMENDATION STATEMENTS:

Radiologists, medical physicists, radiologic technologists, and all supervising physicians have a responsibility to minimize radiation dose to individual patients, to staff, and to society as a whole, while maintaining the necessary diagnostic image quality. (ACR, 2008)

COPYRIGHT:

The Measures are not clinical guidelines, do not establish a standard of medical care, and have not been tested for all potential applications.

The Measures, while copyrighted, can be reproduced and distributed, without modification, for noncommercial purposes, e.g., use by health care providers in connection with their practices. Commercial use is defined as the sale, license, or distribution of the Measures for commercial gain, or incorporation of the Measures into a product or service that is sold, licensed or distributed for commercial gain.

Commercial uses of the Measures require a license agreement between the user and the American Medical Association (AMA), [on behalf of the Physician Consortium for Performance Improvement® (PCPI®)], American Board of Medical Specialties (ABMS) and the American College of Radiology (ACR). Neither the AMA, ABMS, ACR, PCPI, nor its members shall be responsible for any use of the Measures.

The AMA's, PCPI's and ABMS's significant past efforts and contributions to the development and updating of the Measures is acknowledged. ACR is solely responsible for the review and enhancement ("Maintenance") of the Measures as of December 31, 2014.

ACR encourages use of the Measures by other health care professionals, where appropriate.

THE MEASURES AND SPECIFICATIONS ARE PROVIDED “AS IS” WITHOUT WARRANTY OF ANY KIND.

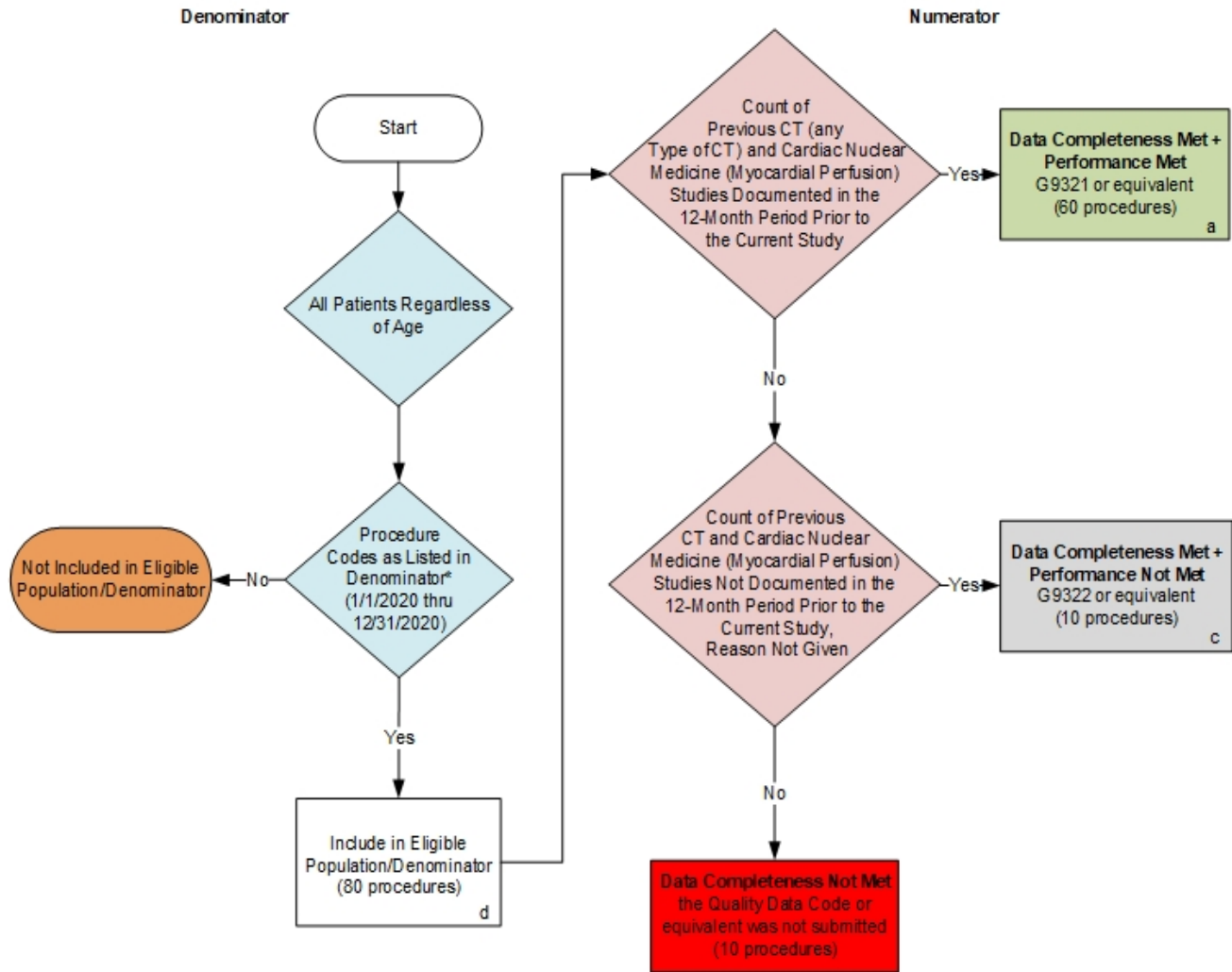
© 2014 American Board of Medical Specialties, American College of Radiology and American Medical Association. All Rights Reserved. Applicable FARS/DFARS Restrictions Apply to Government Use.

Limited proprietary coding is contained in the Measure specifications for convenience. Users of the proprietary code sets should obtain all necessary licenses from the owners of these code sets. The AMA, ABMS, ACR, the PCPI and its members disclaim all liability for use or accuracy of any Current Procedural Terminology (CPT®) or other coding contained in the specifications.

CPT® contained in the Measure specifications is copyright 2004-2019 American Medical Association. LOINC® copyright 2004-2019 Regenstrief Institute, Inc. SNOMED CLINICAL TERMS (SNOMED CT®) copyright 2004-2019 College of American Pathologists. All Rights Reserved.

**2020 Clinical Quality Measure Flow for Quality ID #360:
Optimizing Patient Exposure to Ionizing Radiation: Count of Potential High Dose Radiation
Imaging Studies: Computed Tomography (CT) and Cardiac Nuclear Medicine Studies**

Disclaimer: Refer to the measure specification for specific coding and instructions to submit this measure.



SAMPLE CALCULATIONS:

Data Completeness=

$$\frac{\text{Performance Met (a=60 procedures)} + \text{Performance Not Met (c=10 procedures)}}{\text{Eligible Population / Denominator (d=80 procedures)}} = \frac{70 \text{ procedures}}{80 \text{ procedures}} = 87.50\%$$

Performance Rate=

$$\frac{\text{Performance Met (a=60 procedures)}}{\text{Data Completeness Numerator (70 procedures)}} = \frac{60 \text{ procedures}}{70 \text{ procedures}} = 85.71\%$$

* See the posted measure specification for specific coding and instructions to submit this measure.
 NOTE: Submission Frequency: Procedure

CPT only copyright 2019 American Medical Association. All rights reserved.
 The measure diagrams were developed by CMS as a supplemental resource to be used in conjunction with the measure specifications. They should not be used alone or as a substitution for the measure specification.

**2020 Clinical Quality Measure Flow Narrative for Quality ID #360:
Optimizing Patient Exposure to Ionizing Radiation: Count of Potential High Dose Radiation
Imaging Studies: Computed Tomography (CT) and Cardiac Nuclear Medicine Studies**

Disclaimer: Refer to the measure specification for specific coding and instructions to submit this measure.

1. Start with Denominator
2. All Patients, Regardless of Age
3. Check Procedure Performed:
 - a. If Procedure as Listed in the Denominator equals No, do not include in Eligible Population. Stop Processing.
 - b. If Procedure as Listed in the Denominator equals Yes, include in Eligible Population.
4. Denominator Population:
 - a. Denominator Population is all Eligible Procedures in the Denominator. Denominator is represented as Denominator in the Sample Calculation listed at the end of this document. Letter d equals 80 procedures in the Sample Calculation.
5. Start Numerator
6. Check Count of Previous CT (any Type of CT) and Cardiac Nuclear Medicine (Myocardial Perfusion) Studies Documented in the 12-Month Period Prior to the Current Study:
 - a. If Count of Previous CT (any Type of CT) and Cardiac Nuclear Medicine (Myocardial Perfusion) Studies Documented in the 12-Month Period Prior to the Current Study equals Yes, include in Data Completeness Met and Performance Met.
 - b. Data Completeness Met and Performance Met letter is represented in the Data Completeness and Performance Rate in the Sample Calculation listed at the end of this document. Letter a equals 60 procedures in the Sample Calculation.
 - c. If Count of Previous CT (any Type of CT) and Cardiac Nuclear Medicine (Myocardial Perfusion) Studies Documented in the 12-Month Period Prior to the Current Study equals No, proceed to check Count of Previous CT and Cardiac Nuclear Medicine (Myocardial Perfusion) Studies Not Documented in the 12-Month Period Prior to the Current Study, Reason Not Given.
7. Check Count of Previous CT and Cardiac Nuclear Medicine (Myocardial Perfusion) Studies Not Documented in the 12-Month Period Prior to the Current Study, Reason Not Given:
 - a. If Count of Previous CT and Cardiac Nuclear Medicine (Myocardial Perfusion) Studies Not Documented in the 12-Month Period Prior to the Current Study, Reason Not Given equals Yes, include in Data Completeness Met and Performance Not Met.
 - b. Data Completeness Met and Performance Not Met letter is represented in the Data Completeness in the Sample Calculation listed at the end of this document. Letter c equals 10 procedures in the Sample Calculation.

- c. If Count of Previous CT and Cardiac Nuclear Medicine (Myocardial Perfusion) Studies Not Documented in the 12-Month Period Prior to the Current Study, Reason Not Given equals No, proceed to check Data Completeness Not Met.
8. Check Data Completeness Not Met:
- a. If Data Completeness Not Met, the Quality Data Code or equivalent was not submitted. 10 procedures have been subtracted from the Data Completeness Numerator in Sample Calculation.

SAMPLE CALCULATIONS:

Data Completeness=

$$\frac{\text{Performance Met (a=60 procedures)} + \text{Performance Not Met (c=10 procedures)}}{\text{Eligible Population / Denominator (d=80 procedures)}} = \frac{70 \text{ procedures}}{80 \text{ procedures}} = 87.50\%$$

Performance Rate=

$$\frac{\text{Performance Met (a=60 procedures)}}{\text{Data Completeness Numerator (70 procedures)}} = \frac{60 \text{ procedures}}{70 \text{ procedures}} = 85.71\%$$