

**Quality ID #389: Cataract Surgery: Difference Between Planned and Final Refraction**  
– National Quality Strategy Domain: Effective Clinical Care  
– Meaningful Measure Area: Functional Outcomes

**2020 COLLECTION TYPE:**  
**MIPS CLINICAL QUALITY MEASURES (CQMS)**

**MEASURE TYPE:**  
Outcome – High Priority

**DESCRIPTION:**  
Percentage of patients aged 18 years and older who had cataract surgery performed and who achieved a final refraction within +/- 1.0 diopters of their planned (target) refraction

**INSTRUCTIONS:**  
This measure is to be submitted **each time** a cataract procedure is performed during the performance period. This measure is intended to reflect the quality of services provided for the patient receiving cataract surgery.

**Note:** *This is an outcome measure and will be calculated solely using Merit-based Incentive Payment System (MIPS) eligible clinician, group, or third-party intermediary submitted data.*

- *For patients who receive the surgical procedures specified in the denominator coding, it should be reported whether or not the patient had a difference between planned and final refraction.*
- *Include only procedures performed through **September 30** of the performance period. This will allow the post-operative period to occur before third party intermediaries must submit data to CMS.*

**Measure Submission Type:**

Measure data may be submitted by individual MIPS eligible clinicians, groups, or third-party intermediaries. The listed denominator criteria are used to identify the intended patient population. The numerator options included in this specification are used to submit the quality actions allowed by the measure. The quality-data codes listed do not need to be submitted by MIPS eligible clinicians, groups, or third-party intermediaries that utilize this modality for submissions; however, these codes may be submitted for those third party intermediaries that utilize Medicare Part B claims data. For more information regarding Application Programming Interface (API), please refer to the Quality Payment Program (QPP) website.

**DENOMINATOR:**  
All patients aged 18 years and older who had cataract surgery

**Denominator Criteria (Eligible Cases):**

Patients aged  $\geq 18$  years on date of encounter

**AND**

**Patient encounter during the performance period (CPT):** 66840, 66850, 66852, 66920, 66930, 66940, 66982, 66983, 66984

**WITHOUT**

**Modifier:** 55 or 56

**NUMERATOR:**  
Patients who achieved a final refraction (spherical equivalent) of +/- 1.0 diopters of their planned (target) refraction (spherical equivalent) within 90 days following cataract surgery. The refraction planned and final refraction values should correspond to the eye that underwent the cataract procedure

**Numerator Options:**

**Performance Met:**

Patient achieves final refraction (spherical equivalent) +/- 1.0 diopters of their planned refraction within 90 days of surgery (**G9519**)

**OR**

**Performance Not Met:**

Patient does not achieve final refraction (spherical equivalent) +/- 1.0 diopters of their planned refraction within 90 days of surgery (**G9520**)

**RATIONALE**

Refractive outcome is important to the patient and to the surgeon. Planned refraction is something the surgeon and patient discuss at the time of assessment for cataract surgery and is a way to align patient and surgeon expectations of the outcome. Comparing actual outcome to predicted outcome is a valuable measure of success.

Results of multiple large studies of cataract surgery have repeatedly demonstrated positive outcomes. The ASCRS National Cataract Database reported that at 3 months postoperatively 74.6% of patients were within  $\pm 1.0$  D of target spherical equivalent. The American Academy of Ophthalmology National Eyecare Outcomes Network (NEON) database (n=7626) also found similar rates of success, with 78% of patients within  $\pm 1.0$  D of target spherical equivalent. Kugelberg and Lundstrom published outcomes data from the Swedish registry and found in routine cataract surgeries 75% to 90% of patients ended up with refraction within 1 diopter of the target refraction. The study describes factors that influenced refractive outcome as older age and use of a clear corneal incision. Another 2009 study by Gale and colleagues reported outcomes improving from 79.7% to 87% within 3 measurement cycles and the authors suggested that a benchmark standard of 85% be established.

References:

Olson RJ, Braga-Mele R, Chen SH et al. Cataract in the Adult Eye Preferred Practice Pattern®. Ophthalmology 2017; 124:P1-P119

Lum F, Schein O, Schachat AP, Abbott RL, Hoskins HD, Steinberg EP. Initial two years of experience with the AAO Nation Eyecare Outcomes Network (NEON) cataract surgery database. Ophthalmology 2000; 107:691-97

Gale, RP, Johnston, RL, Zuberbuhler, B, McKibbin, M. Benchmark standards for refractive Outcomes After Cataract Surgery, Eye (London) 2009 Jan; 23 (1):149-52

Kugelberg M, Lundstrom M. Factors related to the degree of success in achieving target refraction in cataract surgery. J Cat Refr Surg 2008; 34(11):1935-39

**CLINICAL RECOMMENDATION STATEMENTS:**

This is an outcome measure. As such, no clinical recommendations are included.

**COPYRIGHT:**

The measure is not clinical guidelines, does not establish a standard of medical care, and has not been tested for all potential applications.

The measure, while copyrighted, can be reproduced and distributed, without modification, for noncommercial purposes, e.g., use by health care providers in connection with their practices. Commercial use is defined as the sale, license, or distribution of the measure for commercial gain, or incorporation of the measure into a product or service that is sold, licensed, or distributed for commercial gain.

Commercial uses of the measure require a license agreement between the user and the American Academy of Ophthalmology (AAO). Neither the AAO, nor its members, shall be responsible for any use of the measure.

**The American Association of Eye and Ear Centers of Excellence's (AAEECE) significant past efforts and contributions to the development and updating of the measure is acknowledged. AAO is solely responsible for the review and enhancement ("Maintenance") of the measure as of June 5, 2015.**

AAO encourages use of the measure by other health care professionals, where appropriate.

**THE MEASURES AND SPECIFICATIONS ARE PROVIDED "AS IS" WITHOUT WARRANTY OF ANY KIND.**

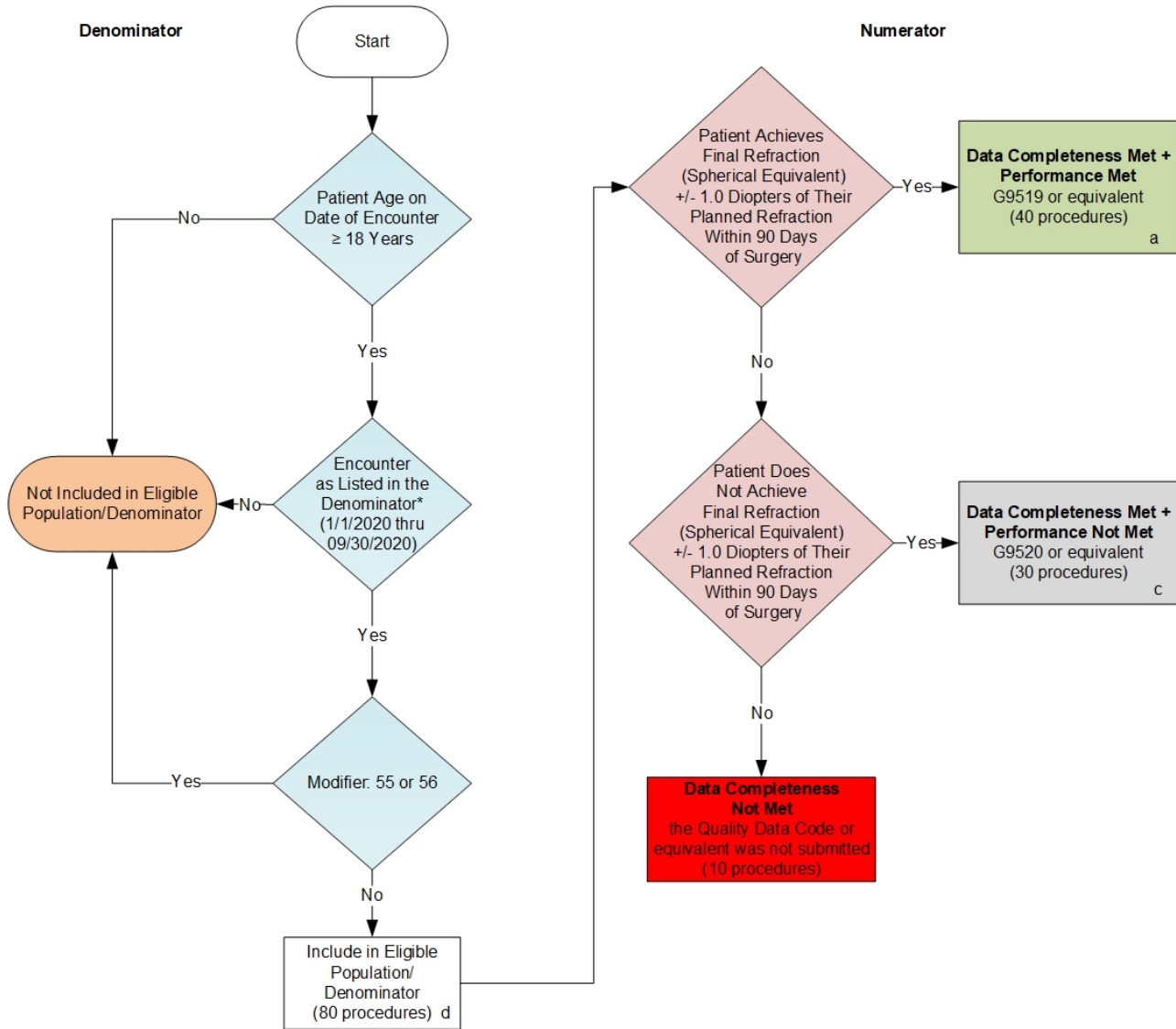
© 2015-2020 American Academy of Ophthalmology. All Rights Reserved. Applicable FARS/DFARS Restrictions Apply to Government Use.

Limited proprietary coding is contained in the measure specifications for convenience. Users of the proprietary code sets should obtain all necessary licenses from the owners of these code sets. The AAO and its members disclaim all liability for use or accuracy of any Current Procedural Terminology (CPT®) or other coding contained in the specifications.

CPT® contained in the Measure specifications is copyright 2004-2019 American Medical Association. All Rights Reserved.

## 2020 Clinical Quality Measure Flow for Quality ID #389: Cataract Surgery: Difference Between Planned and Final Refraction

*Disclaimer: Refer to the measure specification for specific coding and instructions to submit this measure.*



### SAMPLE CALCULATIONS:

**Data Completeness=**  

$$\frac{\text{Performance Met (a=40 procedures)} + \text{Performance Not Met (c=30 procedures)}}{\text{Eligible Population / Denominator (d=80 procedures)}} = \frac{70 \text{ procedures}}{80 \text{ procedures}} = 87.50\%$$

**Performance Rate=**  

$$\frac{\text{Performance Met (a=40 procedures)}}{\text{Data Completeness Numerator (70 procedures)}} = \frac{40 \text{ procedures}}{70 \text{ procedures}} = 57.14\%$$

\*See the posted measure specification for specific coding and instructions to submit this measure  
 NOTE: Submission Frequency: Procedure

CPT only copyright 2019 American Medical Association. All rights reserved.  
 The measure diagrams were developed by CMS as a supplemental resource to be used  
 in conjunction with the measure specifications. They should not be used alone or as a  
 substitution for the measure specification. v4

**2020 Clinical Quality Measure Flow Narrative for Quality ID #389:  
Cataract Surgery: Difference Between Planned and Final Refraction**

**Disclaimer:** Refer to the measure specification for specific coding and instructions to submit this measure.

1. Start with Denominator
2. Check Patient Age:
  - a. If Patient Age on Date of Encounter is greater than or equal to 18 Years equals No, do not include in Eligible Population. Stop Processing.
  - b. If Patient Age on Date of Encounter is greater than or equal to 18 Years equals Yes, proceed to check Encounter Performed.
3. Check Encounter Performed:
  - a. If Encounter as Listed in the Denominator equals No, do not include in Eligible Population. Stop Processing.
  - b. If Encounter as Listed in the Denominator equals Yes, proceed to check Modifier: 55 or 56.
4. Check Modifier: 55 or 56:
  - a. If Modifier: 55 or 56 equals Yes, do not include in Eligible Population. Stop Processing.
  - b. If Modifier: 55 or 56 equal No, include in Eligible Population.
5. Denominator Population:
  - a. Denominator Population is all Eligible Procedures in the Denominator. Denominator is represented as Denominator in the Sample Calculation listed at the end of this document. Letter d equals 80 procedures in the Sample Calculation.
6. Start Numerator
7. Check Patient Achieves Final Refraction (Spherical Equivalent) plus or minus 1.0 Diopters of Their Planned Refraction Within 90 Days of Surgery:
  - a. If Patient Achieves Final Refraction (Spherical Equivalent) plus or minus 1.0 Diopters of Their Planned Refraction Within 90 Days of Surgery equals Yes, include in Data Completeness Met and Performance Met.
  - b. Data Completeness Met and Performance Met letter is represented in the Data Completeness and Performance Rate in the Sample Calculation listed at the end of this document. Letter a equals 40 procedures in the Sample Calculation.
  - c. If Patient Achieves Final Refraction (Spherical Equivalent) plus or minus 1.0 Diopters of Their Planned Refraction Within 90 Days of Surgery equals No, proceed to check Patient Does Not Achieve Final Refraction plus or minus 1.0 Diopters of Their Planned Refraction Within 90 days of Surgery.
8. Check Patient Does Not Achieve Final Refraction (Spherical Equivalent) plus or minus 1.0 Diopters of Their Planned Refraction Within 90 Days of Surgery:

- a. If Patient Does Not Achieve Final Refraction (Spherical Equivalent) plus or minus 1.0 Diopters of Their Planned Refraction Within 90 Days of Surgery equals Yes, include in Data Completeness Met and Performance Not Met.
  - b. Data Completeness Met and Performance Not Met letter is represented in the Data Completeness in the Sample Calculation listed at the end of this document. Letter c equals 30 procedures in the Sample Calculation.
  - c. If Patient Does Not Achieve Final Refraction (Spherical Equivalent) plus or minus 1.0 Diopters of Their Planned Refraction Within 90 Days of Surgery equals No, proceed to check Data Completeness Not Met.
9. Check Data Completeness Not Met:
- a. If Data Completeness Not Met, the Quality Data Code or equivalent was not submitted. 10 procedures have been subtracted from the Data Completeness Numerator in the Sample Calculation.

**SAMPLE CALCULATIONS:**

**Data Completeness=**

$$\frac{\text{Performance Met (a=40 procedures)} + \text{Performance Not Met (c=30 procedures)}}{\text{Eligible Population / Denominator (d=80 procedures)}} = \frac{70 \text{ procedures}}{80 \text{ procedures}} = 87.50\%$$

**Performance Rate=**

$$\frac{\text{Performance Met (a=40 procedures)}}{\text{Data Completeness Numerator (70 procedures)}} = \frac{40 \text{ procedures}}{70 \text{ procedures}} = 57.14\%$$