

Quality ID #395: Lung Cancer Reporting (Biopsy/Cytology Specimens)
– National Quality Strategy Domain: Communication and Care Coordination
– Meaningful Measure Area: Transfer of Health Information and Interoperability

2020 COLLECTION TYPE:
MIPS CLINICAL QUALITY MEASURES (CQMS)

MEASURE TYPE:
Process – High Priority

DESCRIPTION:
Pathology reports based on biopsy and/or cytology specimens with a diagnosis of primary non-small cell lung cancer classified into specific histologic type or classified as non-small cell lung cancer not otherwise specified (NSCLC-NOS) with an explanation included in the pathology report

INSTRUCTIONS:
This measure is to be submitted **each time** a patient's pathology report addresses specimens with a diagnosis of non-small cell lung cancer; however, only one quality-data code (QDC) per date of service for a patient is required. This measure may be submitted by Merit-based Incentive Payment System (MIPS) eligible clinicians who perform the quality actions described in the measure based on the services provided and the measure-specific denominator coding.

Measure Submission Type:
Measure data may be submitted by individual MIPS eligible clinicians, groups, or third party intermediaries. The listed denominator criteria are used to identify the intended patient population. The numerator options included in this specification are used to submit the quality actions as allowed by the measure. The quality-data codes listed do not need to be submitted by MIPS eligible clinicians, groups, or third party intermediaries that utilize this modality for submissions; however, these codes may be submitted for those third party intermediaries that utilize Medicare Part B claims data. For more information regarding Application Programming Interface (API), please refer to the Quality Payment Program (QPP) website.

DENOMINATOR:
Biopsy and cytology specimen reports with a diagnosis of primary non-small cell lung cancer

Denominator Criteria (Eligible Cases):
Patients ≥ 18 years of age on date of service

AND
Diagnosis for lung cancer (ICD-10-CM): C34.00, C34.01, C34.02, C34.10, C34.11, C34.12, C34.2, C34.30, C34.31, C34.32, C34.80, C34.81, C34.82, C34.90, C34.91, C34.92

AND
Patient encounter during performance period (CPT): 88104, 88108, 88112, 88173, 88305

AND NOT

DENOMINATOR EXCLUSIONS:
Specimen site other than anatomic location of lung or is not classified as primary non-small cell lung cancer: G9420

NUMERATOR:
Biopsy and cytology specimen reports with a diagnosis of primary non-small cell lung cancer classified into specific histologic type (squamous cell carcinoma, adenocarcinoma) OR classified as NSCLC-NOS with an explanation included in the pathology report

Numerator Options:

Performance Met:

Primary non-small cell lung cancer biopsy and cytology specimen report documents classification into specific histologic type OR classified as NSCLC- NOS with an explanation (**G9418**)

OR

Denominator Exception:

Documentation of medical reason(s) for not including the histological type OR NSCLC-NOS classification with an explanation (e.g., biopsy taken for other purposes in a patient with a history of primary non- small cell lung cancer or other documented medical reasons) (**G9419**)

OR

Performance Not Met:

Primary non-small cell lung cancer biopsy and cytology specimen report does not document classification into specific histologic type OR classified as NSCLC-NOS with an explanation (**G9421**)

RATIONALE:

Lung cancer is the most frequent cause of major cancer incidence and mortality worldwide. The classifications of lung cancer published by the World Health Organization (WHO) in 1967, 1981, and 1999 were written primarily by pathologists for pathologists. Only in the 2004 revision, relevant genetics and clinical information were introduced. Nevertheless, because of remarkable advances over the last 6 years in our understanding of lung adenocarcinoma, particularly in the area of medical oncology, molecular biology, and radiology, there is a pressing need for a revised classification, based not on pathology alone, but rather on an integrated multidisciplinary platform.

For the first time, this classification addresses an approach to small biopsies and cytology in lung cancer diagnosis. Recent data regarding epidermal growth factor receptor (EGFR) mutation predicting responsiveness to epidermal growth factor receptor tyrosine kinase inhibitors (EGFR-TKIs), toxicities, and therapeutic efficacy have established the importance of distinguishing squamous cell carcinoma from adenocarcinoma and non-small cell lung carcinoma (NSCLC) not otherwise specified (NOS) in patients with advanced lung cancer. Approximately 70% of lung cancers are diagnosed and staged by small biopsies or cytology rather than surgical resection specimens, with increasing use of transbronchial needle aspiration (TBNA), endobronchial ultrasound-guided TBNA and esophageal ultrasound-guided needle aspiration. Within the NSCLC group, most pathologists can identify well- or moderately-differentiated squamous cell carcinomas or adenocarcinomas, but specific diagnoses are more difficult with poorly differentiated tumors. Nevertheless, in small biopsies and/or cytology specimens, 10 to 30% of specimens continue to be diagnosed as NSCLC-NOS.

CLINICAL RECOMMENDATION STATEMENTS:

To address advances in oncology, molecular biology, pathology, radiology, and surgery of lung adenocarcinoma, an international multidisciplinary classification was sponsored by the International Association for the Study of Lung Cancer, American Thoracic Society, and European Respiratory Society. This new adenocarcinoma classification is needed to provide uniform terminology and diagnostic criteria, especially for bronchioloalveolar carcinoma (BAC), the overall approach to small non-resection cancer specimens, and for multidisciplinary strategic management of tissue for molecular and immunohistochemical studies.

For small biopsies and cytology, we recommend that NSCLC be further classified into a more specific histologic type, such as adenocarcinoma or squamous cell carcinoma, whenever possible (strong recommendation, moderate quality evidence).

We recommend that the term NSCLC-NOS be used as little as possible and we recommend it be applied only when a more specific diagnosis is not possible by morphology and/or special stains (strong recommendation, moderate quality evidence).

evidence).

The above strategy for classification of adenocarcinoma versus other histologies and the terminology should be used in routine diagnosis and future research and clinical trials so that there is uniform classification of disease cohorts in relationship to tumor subtypes.

Travis WD, Brambilla E, Noguchi M, et al. International Association for the Study of Lung Cancer/American Thoracic Society/European Respiratory Society International Multidisciplinary Classification of Lung Adenocarcinoma. Journal of Thoracic Oncology 2011; 6:244-285.

COPYRIGHT:

THE MEASURES ARE PROVIDED "AS IS" WITHOUT WARRANTY OF ANY KIND.

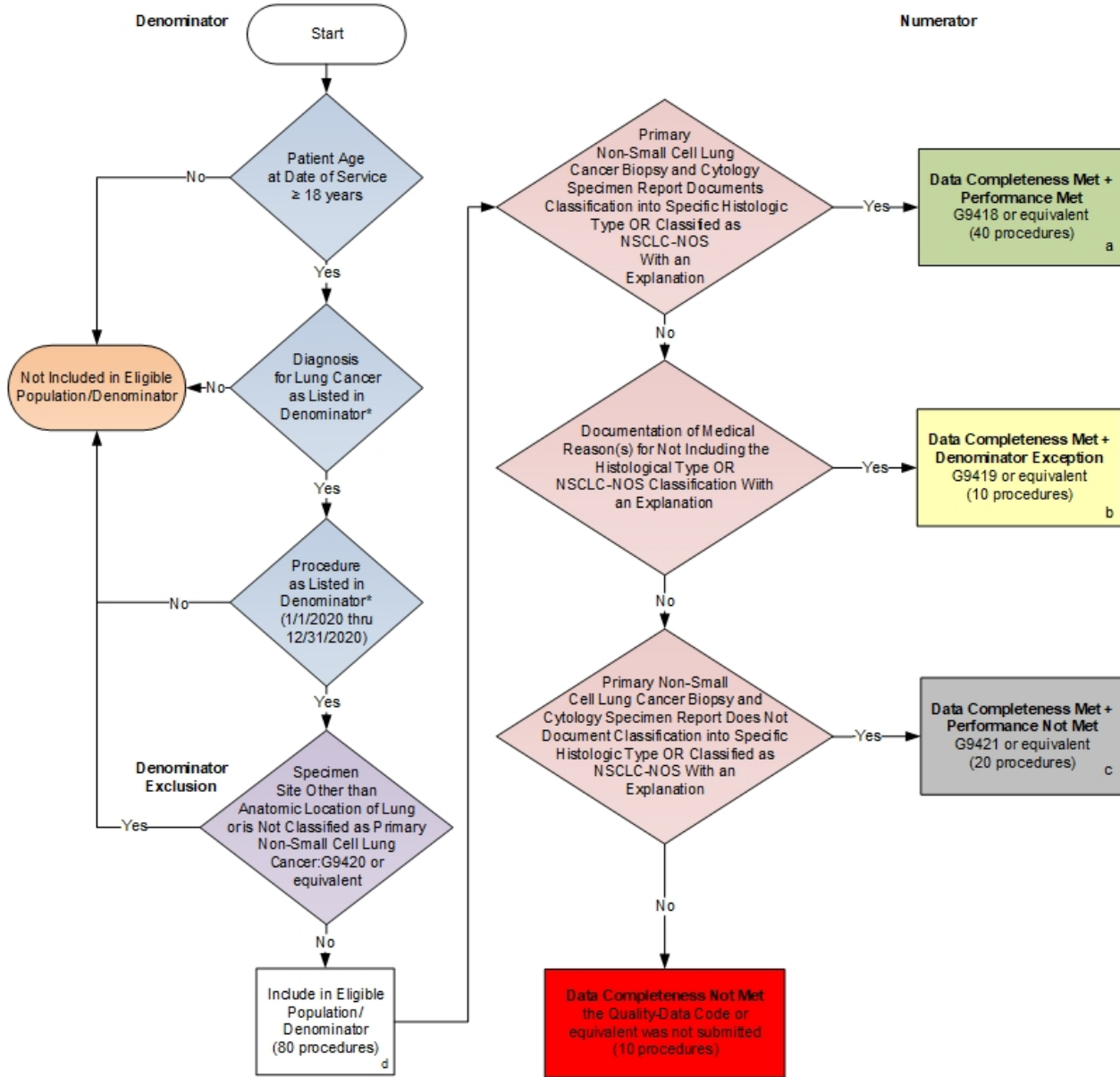
© 2019 College of American Pathologists. All Rights Reserved

Limited proprietary coding is contained in the Measure specifications for convenience. Users of the proprietary code sets should obtain all necessary licenses from the owners of these code sets. The College of American Pathologists disclaims all liability for use or accuracy of any Current Procedural Terminology (CPT®) or other coding contained in the specifications.

CPT® contained in the Measure specifications is copyright 2004-2019 American Medical Association. ICD-10 is copyright 2019 World Health Organization. All Rights Reserved.

2020 Clinical Quality Measure Flow for Quality ID #395: Lung Cancer Reporting (Biopsy/Cytology Specimens)

Disclaimer: Refer to the measure specification for specific coding and instructions to submit this measure.



SAMPLE CALCULATIONS:

Data Completeness=

$$\frac{\text{Performance Met (a=40 procedures)} + \text{Denominator Exception (b=10 procedures)} + \text{Performance Not Met (c=20 procedures)}}{\text{Eligible Population/Denominator (d=80 procedures)}} = \frac{70 \text{ procedures}}{80 \text{ procedures}} = 87.50\%$$

Performance Rate=

$$\frac{\text{Performance Met (a=40 procedures)}}{\text{Data Completeness Numerator (70 procedures) - Denominator Exception (b=10 procedures)}} = \frac{40 \text{ procedures}}{60 \text{ procedures}} = 66.67\%$$

*See the posted measure specification for specific coding and instructions to submit this measure.

NOTE: Submission Frequency: Procedure

CPT only copyright 2019 American Medical Association. All rights reserved. The measure diagrams were developed by CMS as a supplemental resource to be used in conjunction with the measure specifications. They should not be used alone or as a substitution for the measure specification.

v4

**2020 Clinical Quality Measure Flow Narrative for Quality ID #395:
Lung Cancer Reporting (Biopsy/Cytology Specimens)**

Disclaimer: Refer to the measure specification for specific coding and instructions to submit this measure.

1. Start with Denominator
2. Check Patient Age:
 - a. If Patient Age at Date of Service is greater than or equal to 18 Years equals No, do not include in Eligible Population. Stop Processing.
 - b. If Patient Age at Date of Service is greater than or equal to 18 Years equals Yes, proceed to check Patient Diagnosis.
3. Check Patient Diagnosis:
 - a. If Diagnosis for Lung Cancer as Listed in the Denominator equals No, do not include in Eligible Population. Stop Processing.
 - b. If Diagnosis for Lung Cancer as Listed in the Denominator equals Yes, proceed to check Procedure Performed.
4. Check Procedure Performed:
 - a. If Procedure as Listed in the Denominator equals No, do not include in Eligible Population. Stop Processing.
 - b. If Procedure as Listed in the Denominator equals Yes, proceed to check Specimen Site Other than Anatomic Location of Lung or is Not Classified as Primary Non-Small Cell Lung Cancer.
5. Check Specimen Site Other than Anatomic Location of Lung or is Not Classified as Primary Non-Small Cell Lung Cancer.
 - a. If Specimen Site Other than Anatomic Location of Lung or is Not Classified as Primary Non-Small Cell Lung Cancer equals Yes, do not include in Eligible Population. Stop Processing.
 - b. If Specimen Site Other than Anatomic Location of Lung or is Not Classified as Primary Non-Small Cell Lung Cancer equals No, include in Eligible Population
6. Denominator Population is all Eligible Procedures in the Denominator. Denominator is represented as Denominator in the Sample Calculation listed at the end of this document. Letter d equals 80 procedures in the Sample Calculation.
7. Start Numerator
8. Check Primary Non-Small Cell Lung Cancer Biopsy and Cytology Specimen Report Documents Classification into Specific Histologic Type OR Classified as NSCLC-NOS With an Explanation:
 - a. If Primary Non-Small Cell Lung Cancer Biopsy and Cytology Specimen Report Documents Classification into Specific Histologic Type OR Classified as NSCLC-NOS With an Explanation equals Yes, include in Data Completeness Met and Performance Met.

- b. Data Completeness Met and Performance Met letter is represented in the Data Completeness and Performance Rate in the Sample Calculation listed at the end of this document. Letter a equals 40 procedures in Sample Calculation.
 - c. If Primary Non-Small Cell Lung Cancer Biopsy and Cytology Specimen Report Documents Classification into Specific Histologic Type OR Classified as NSCLC-NOS With an Explanation equals No, proceed to check Documentation of Medical Reason(s) for Not Including the Histological Type OR NSCLC-NOS Classification with an Explanation.
9. Check Documentation of Medical Reason(s) for Not Including the Histological Type OR NSCLC- NOS Classification With an Explanation:
- a. If Documentation of Medical Reason(s) for Not Including the Histological Type OR NSCLC-NOS Classification With an Explanation equals Yes, include in the Data Completeness Met and Denominator Exception.
 - b. Data Completeness Met and Denominator Exception letter is represented in the Data Completeness and Performance Rate in the Sample Calculation listed at the end of this document. Letter b equals 10 procedures in the Sample Calculation.
 - c. If Documentation of Medical Reason(s) for Not Including the Histological Type OR NSCLC-NOS Classification With an Explanation equals No, proceed to check Primary Non-Small Cell Lung Cancer Biopsy and Cytology Specimen Report Does Not Document Classification into Specific Histologic Type OR Classified as NSCLC-NOS With an Explanation.
10. Check Primary Non-Small Cell Lung Cancer Biopsy and Cytology Specimen Report Does Not Document Classification into Specific Histologic Type OR Classified as NSCLC-NOS With an Explanation:
- a. If Primary Non-Small Cell Lung Cancer Biopsy and Cytology Specimen Report Does Not Document Classification into Specific Histologic Type OR Classified as NSCLC-NOS With an Explanation equals Yes, include in Data Completeness Met and Performance Not Met.
 - b. Data Completeness Met and Performance Not Met letter is represented in the Data Completeness in the Sample Calculation listed at the end of this document. Letter c equals 20 procedures in the Sample Calculation.
 - c. If Primary Non-Small Cell Lung Cancer Biopsy and Cytology Specimen Report Does Not Document Classification into Specific Histologic Type OR Classified as NSCLC-NOS With an Explanation equals No, proceed to check Data Completeness Not Met.
11. Check Data Completeness Not Met:
- a. If Data Completeness Not Met, the Quality Data Code or equivalent was not submitted. 10 procedures have been subtracted from the Data Completeness Numerator in the Sample Calculation.

SAMPLE CALCULATIONS:

Data Completeness=	
Performance Met (a=40 procedures) + Denominator Exception (b=10 procedures) + Performance Not Met (c=20 procedures)	= 70 procedures = 87.50%
Eligible Population/Denominator (d=80 procedures)	= 80 procedures
Performance Rate=	
Performance Met (a=40 procedures)	= 40 procedures = 66.67%
Data Completeness Numerator (70 procedures) – Denominator Exception (b=10 procedures)	= 60 procedures