

Quality ID #1 (CBE 0059): Diabetes: Hemoglobin A1c (HbA1c) Poor Control (>9%)

2024 COLLECTION TYPE: **MIPS CLINICAL QUALITY MEASURES (CQMS)**

MEASURE TYPE:
Intermediate Outcome – High Priority

DESCRIPTION:
Percentage of patients 18-75 years of age with diabetes who had hemoglobin A1c > 9.0% during the measurement period.

INSTRUCTIONS:
This measure is to be submitted a minimum of **once per performance period** for patients with diabetes seen during the performance period. The most recent quality data code submitted will be used for performance calculation. This measure may be submitted by Merit-based Incentive Payment System (MIPS) eligible clinicians who perform the quality actions described in the measure based on the services provided and the measure-specific denominator coding.

NOTE: Patient encounters for this measure conducted via telehealth (including but not limited to encounters coded with GQ, GT, 95, POS 02, POS 10) are allowable.

Measure Submission Type:
Measure data may be submitted by individual MIPS eligible clinicians, groups, or third-party intermediaries. The listed denominator criteria are used to identify the intended patient population. The numerator options included in this specification are used to submit the quality actions as allowed by the measure. The quality data codes listed do not need to be submitted by MIPS eligible clinicians, groups, or third-party intermediaries that utilize this modality for submissions; however, these codes may be submitted for those third-party intermediaries that utilize Medicare Part B claims data. For more information regarding Application Programming Interface (API), please refer to the Quality Payment Program (QPP) website.

DENOMINATOR:
Patients 18 - 75 years of age, with diabetes with a visit during the measurement period

DENOMINATOR NOTE: To assess the age for exclusions, the patient's age on the date of the encounter should be used.

**Signifies that this CPT Category I code is a non-covered service under the Medicare Part B Physician Fee Schedule (PFS). These non-covered services should be counted in the denominator population for MIPS CQMs.*

Denominator Criteria (Eligible Cases):
Patients 18 through 75 years of age on date of encounter

AND
Diagnosis for diabetes (ICD-10-CM): E10.10, E10.11, E10.21, E10.22, E10.29, E10.311, E10.319, E10.3211, E10.3212, E10.3213, E10.3219, E10.3291, E10.3292, E10.3293, E10.3299, E10.3311, E10.3312, E10.3313, E10.3319, E10.3391, E10.3392, E10.3393, E10.3399, E10.3411, E10.3412, E10.3413, E10.3419, E10.3491, E10.3492, E10.3493, E10.3499, E10.3511, E10.3512, E10.3513, E10.3519, E10.3521, E10.3522, E10.3523, E10.3529, E10.3531, E10.3532, E10.3533, E10.3539, E10.3541, E10.3542, E10.3543, E10.3549, E10.3551, E10.3552, E10.3553, E10.3559, E10.3591, E10.3592, E10.3593, E10.3599, E10.36, E10.37X1, E10.37X2, E10.37X3, E10.37X9, E10.39, E10.40, E10.41, E10.42, E10.43, E10.44, E10.49, E10.51, E10.52, E10.59,

E10.610, E10.618, E10.620, E10.621, E10.622, E10.628, E10.630, E10.638, E10.641, E10.649, E10.65, E10.69, E10.8, E10.9, E11.00, E11.01, E11.21, E11.22, E11.29, E11.311, E11.319, E11.3211, E11.3212, E11.3213, E11.3219, E11.3291, E11.3292, E11.3293, E11.3299, E11.3311, E11.3312, E11.3313, E11.3319, E11.3391, E11.3392, E11.3393, E11.3399, E11.3411, E11.3412, E11.3413, E11.3419, E11.3491, E11.3492, E11.3493, E11.3499, E11.3511, E11.3512, E11.3513, E11.3519, E11.3521, E11.3522, E11.3523, E11.3529, E11.3531, E11.3532, E11.3533, E11.3539, E11.3541, E11.3542, E11.3543, E11.3549, E11.3551, E11.3552, E11.3553, E11.3559, E11.3591, E11.3592, E11.3593, E11.3599, E11.36, E11.37X1, E11.37X2, E11.37X3, E11.37X9, E11.39, E11.40, E11.41, E11.42, E11.43, E11.44, E11.49, E11.51, E11.52, E11.59, E11.610, E11.618, E11.620, E11.621, E11.622, E11.628, E11.630, E11.638, E11.641, E11.649, E11.65, E11.69, E11.8, E11.9, E13.00, E13.01, E13.10, E13.11, E13.21, E13.22, E13.29, E13.311, E13.319, E13.3211, E13.3212, E13.3213, E13.3219, E13.3291, E13.3292, E13.3293, E13.3299, E13.3311, E13.3312, E13.3313, E13.3319, E13.3391, E13.3392, E13.3393, E13.3399, E13.3411, E13.3412, E13.3413, E13.3419, E13.3491, E13.3492, E13.3493, E13.3499, E13.3511, E13.3512, E13.3513, E13.3519, E13.3521, E13.3522, E13.3523, E13.3529, E13.3531, E13.3532, E13.3533, E13.3539, E13.3541, E13.3542, E13.3543, E13.3549, E13.3551, E13.3552, E13.3553, E13.3559, E13.3591, E13.3592, E13.3593, E13.3599, E13.36, E13.37X1, E13.37X2, E13.37X3, E13.37X9, E13.39, E13.40, E13.41, E13.42, E13.43, E13.44, E13.49, E13.51, E13.52, E13.59, E13.610, E13.618, E13.620, E13.621, E13.622, E13.628, E13.630, E13.638, E13.641, E13.649, E13.65, E13.69, E13.8, E13.9, O24.011, O24.012, O24.013, O24.019, O24.02, O24.03, O24.111, O24.112, O24.113, O24.119, O24.12, O24.13, O24.311, O24.312, O24.313, O24.319, O24.32, O24.33, O24.811, O24.812, O24.813, O24.819, O24.82, O24.83

AND

Patient encounter during performance period (CPT or HCPCS): 97802, 97803, 97804, 99202, 99203, 99204, 99205, 99212, 99213, 99214, 99215, 99341, 99342, 99344, 99345, 99347, 99348, 99349, 99350, 99385*, 99386*, 99387*, 99395*, 99396*, 99397*, G0270, G0271, G0438, G0439

AND NOT

DENOMINATOR EXCLUSIONS:

Hospice services provided to patient any time during the measurement period: G9687

OR

Palliative care services provided to patient any time during the measurement period: G9988

OR

Patients age 66 and older in Institutional Special Needs Plans (SNP) or residing in long-term care with a POS code 32, 33, 34, 54 or 56 for more than 90 consecutive days during the measurement period: G2081

OR

Patients 66 years of age and older with at least one claim/encounter for frailty during the measurement period AND a dispensed medication for dementia during the measurement period or the year prior to the measurement period: G2090

OR

Patients 66 years of age and older with at least one claim/encounter for frailty during the measurement period AND either one acute inpatient encounter with a diagnosis of advanced illness or two outpatient, observation, ED or nonacute inpatient encounters on different dates of service with an advanced illness diagnosis during the measurement period or the year prior to the measurement period: G2091

Table: Dementia Exclusion Medications

Description	Prescription
Cholinesterase inhibitors	Donepezil Galantamine Rivastigimine
Miscellaneous central nervous system agents	Memantine
Dementia combinations	Donepezil-memantine

- **Codes to identify Frailty:** 99504, 99509, E0100, E0105, E0130, E0135, E0140, E0141, E0143, E0144, E0147, E0148, E0149, E0163, E0165, E0167, E0168, E0170, E0171, E0250, E0251, E0255, E0256, E0260, E0261, E0265, E0266, E0270, E0290, E0291, E0292, E0293, E0294, E0295, E0296, E0297, E0301, E0302, E0303, E0304, E0424, E0425, E0430, E0431, E0433, E0434, E0435, E0439, E0440, E0441, E0442, E0443, E0444, E0462, E0465, E0466, E0470, E0471, E0472, E0561, E0562, E1130, E1140, E1150, E1160, E1161, E1240, E1250, E1260, E1270, E1280, E1285, E1290, E1295, E1296, E1297, E1298, G0162, G0299, G0300, G0493, G0494, S0271, S0311, S9123, S9124, T1000, T1001, T1002, T1003, T1004, T1005, T1019, T1020, T1021, T1022, T1030, T1031, L89.000, L89.001, L89.002, L89.003, L89.004, L89.006, L89.009, L89.010, L89.011, L89.012, L89.013, L89.014, L89.016, L89.019, L89.020, L89.021, L89.022, L89.023, L89.024, L89.026, L89.029, L89.100, L89.101, L89.102, L89.103, L89.104, L89.106, L89.109, L89.110, L89.111, L89.112, L89.113, L89.114, L89.116, L89.119, L89.120, L89.121, L89.122, L89.123, L89.124, L89.126, L89.129, L89.130, L89.131, L89.132, L89.133, L89.134, L89.136, L89.139, L89.140, L89.141, L89.142, L89.143, L89.144, L89.146, L89.149, L89.150, L89.151, L89.152, L89.153, L89.154, L89.156, L89.159, L89.200, L89.201, L89.202, L89.203, L89.204, L89.206, L89.209, L89.210, L89.211, L89.212, L89.213, L89.214, L89.216, L89.219, L89.220, L89.221, L89.222, L89.223, L89.224, L89.226, L89.229, L89.300, L89.301, L89.302, L89.303, L89.304, L89.306, L89.309, L89.310, L89.311, L89.312, L89.313, L89.314, L89.316, L89.319, L89.320, L89.321, L89.322, L89.323, L89.324, L89.326, L89.329, L89.40, L89.41, L89.42, L89.43, L89.44, L89.45, L89.46, L89.500, L89.501, L89.502, L89.503, L89.504, L89.506, L89.509, L89.510, L89.511, L89.512, L89.513, L89.514, L89.516, L89.519, L89.520, L89.521, L89.522, L89.523, L89.524, L89.526, L89.529, L89.600, L89.601, L89.602, L89.603, L89.604, L89.606, L89.609, L89.610, L89.611, L89.612, L89.613, L89.614, L89.616, L89.619, L89.620, L89.621, L89.622, L89.623, L89.624, L89.626, L89.629, L89.810, L89.811, L89.812, L89.813, L89.814, L89.816, L89.819, L89.890, L89.891, L89.892, L89.893, L89.894, L89.896, L89.899, L89.90, L89.91, L89.92, L89.93, L89.94, L89.95, L89.96, M62.50, M62.81, M62.84, R26.2, R26.89, R26.9, R53.1, R53.81, R54, R62.7, R63.4, R63.6, R64, W01.0XXA, W01.0XXD, W01.0XXS, W01.10XA, W01.10XD, W01.10XS, W01.110A, W01.110D, W01.110S, W01.111A, W01.111D, W01.111S, W01.118A, W01.118D, W01.118S, W01.119A, W01.119D, W01.119S, W01.190A, W01.190D, W01.190S, W01.198A, W01.198D, W01.198S, W06.XXXA, W06.XXXD, W06.XXXS, W07.XXXA, W07.XXXD, W07.XXXS, W08.XXXA, W08.XXXD, W08.XXXS, W10.0XXA, W10.0XXD, W10.0XXS, W10.1XXA, W10.1XXD, W10.1XXS, W10.2XXA, W10.2XXD, W10.2XXS, W10.8XXA, W10.8XXD, W10.8XXS, W10.9XXA, W10.9XXD, W10.9XXS, W18.00XA, W18.00XD, W18.00XS, W18.02XA, W18.02XD, W18.02XS, W18.09XA, W18.09XD, W18.09XS, W18.11XA, W18.11XD, W18.11XS, W18.12XA, W18.12XD, W18.12XS, W18.2XXA, W18.2XXD, W18.2XXS, W18.30XA, W18.30XD, W18.30XS, W18.31XA, W18.31XD, W18.31XS, W18.39XA, W18.39XD, W18.39XS, W19.XXXA, W19.XXXD, W19.XXXS, Y92.199, Z59.3, Z73.6, Z74.01, Z74.09, Z74.1, Z74.2, Z74.3, Z74.8, Z74.9, Z91.81, Z99.11, Z99.3, Z99.81, Z99.89
- **Codes to identify Advanced Illness:** A81.00, A81.01, A81.09, C25.0, C25.1, C25.2, C25.3, C25.4, C25.7, C25.8, C25.9, C71.0, C71.1, C71.2, C71.3, C71.4, C71.5, C71.6, C71.7, C71.8, C71.9, C77.0, C77.1, C77.2, C77.3, C77.4, C77.5, C77.8, C77.9, C78.00, C78.01, C78.02, C78.1, C78.2, C78.30,

C78.39, C78.4, C78.5, C78.6, C78.7, C78.80, C78.89, C79.00, C79.01, C79.02, C79.10, C79.11, C79.19, C79.2, C79.31, C79.32, C79.40, C79.49, C79.51, C79.52, C79.60, C79.61, C79.62, C79.70, C79.71, C79.72, C79.81, C79.82, C79.89, C79.9, C91.00, C91.02, C92.00, C92.02, C93.00, C93.02, C93.90, C93.92, C93.Z0, C93.Z2, C94.30, C94.32, F01.50, F01.511, F01.518, F01.52, F01.53, F01.54, F01.A0, F01.A11, F01.A18, F01.A2, F01.A3, F01.A4, F01.B0, F01.B11, F01.B18, F01.B2, F01.B3, F01.B4, F01.C0, F01.C11, F01.C18, F01.C2, F01.C3, F01.C4, F02.80, F02.811, F02.818, F02.82, F02.83, F02.84, F02.A0, F02.A11, F02.A18, F02.A2, F02.A3, F02.A4, F02.B0, F02.B11, F02.B18, F02.B2, F02.B3, F02.B4, F02.C0, F02.C11, F02.C18, F02.C2, F02.C3, F02.C4, F03.90, F03.911, F03.918, F03.92, F03.93, F03.94, F03.A0, F03.A11, F03.A18, F03.A2, F03.A3, F03.A4, F03.B0, F03.B11, F03.B18, F03.B2, F03.B3, F03.B4, F03.C0, F03.C11, F03.C18, F03.C2, F03.C3, F03.C4, F04, F10.27, F10.96, F10.97, G10, G12.21, G20, G20.A1, G20.A2, G20.B1, G20.B2, G20.C, G30.0, G30.1, G30.8, G30.9, G31.01, G31.09, G31.83, I09.81, I11.0, I12.0, I13.0, I13.11, I13.2, I50.1, I50.20, I50.21, I50.22, I50.23, I50.30, I50.31, I50.32, I50.33, I50.40, I50.41, I50.42, I50.43, I50.810, I50.811, I50.812, I50.813, I50.814, I50.82, I50.83, I50.84, I50.89, I50.9, J43.0, J43.1, J43.2, J43.8, J43.9, J68.4, J84.10, J84.112, J84.170, J84.178, J96.10, J96.11, J96.12, J96.20, J96.21, J96.22, J96.90, J96.91, J96.92, J98.2, J98.3, K70.10, K70.11, K70.2, K70.30, K70.31, K70.40, K70.41, K70.9, K74.00, K74.01, K74.02, K74.1, K74.2, K74.4, K74.5, K74.60, K74.69, N18.5, N18.6

NUMERATOR:

Patients whose most recent HbA1c level (performed during the measurement period) is > 9.0% or is missing, or was not performed during the measurement period

Numerator Instructions:

INVERSE MEASURE - A lower calculated performance rate for this measure indicates better clinical care or control. The “Performance Not Met” numerator option for this measure is the representation of the better clinical quality or control. Submitting that numerator option will produce a performance rate that trends closer to 0%, as quality increases. For inverse measures, a rate of 100% means all of the denominator eligible patients did not receive the appropriate care or were not in proper control.

Patient is numerator compliant if most recent HbA1c level >9%, the most recent HbA1c result is missing, or if there are no HbA1c tests performed and results documented during the measurement period. Ranges and thresholds do not meet criteria for this indicator. A distinct numeric result is required for numerator compliance. Do not include HbA1c levels reported by the patient.

Numerator Options:

Performance Met:

Most recent hemoglobin A1c level > 9.0% (**M1211**)

OR

Performance Met:

Hemoglobin A1c level is missing, or was not performed during the measurement period (12 months) (**M1212**)

OR

Performance Not Met:

Most recent hemoglobin A1c (HbA1c) level < 7.0% (**3044F**)

OR

Performance Not Met:

Most recent hemoglobin A1c (HbA1c) level greater than or equal to 7.0% and less than 8.0% (**3051F**)

OR

Performance Not Met:

Most recent hemoglobin A1c (HbA1c) level greater than or equal to 8.0% and less than or equal to 9.0% (**3052F**)

RATIONALE:

Diabetes is the seventh leading cause of death in the United States (Centers for Disease Control and Prevention [CDC], 2022a). In 2019, diabetes affected more than 37 million Americans (11.3 percent of the U.S. population) and killed more than 87,000 people (American Diabetes Association [ADA], 2022a). Diabetes is a long-lasting disease

marked by high blood glucose levels, resulting from the body's inability to produce or use insulin properly (CDC, 2022a). People with diabetes are at increased risk of serious health complications including vision loss, heart disease, stroke, kidney damage, amputation of feet or legs, and premature death (CDC, 2022b).

In 2017, diabetes cost the U.S. an estimated \$327 billion: \$237 billion in direct medical costs and \$90 billion in reduced productivity. This is a 34 percent increase from the estimated \$245 billion spent on diabetes in 2012 ([ADA], 2018).

Controlling A1c blood levels helps reduce the risk of microvascular complications (eye, kidney and nerve diseases) (ADA, 2022b).

CLINICAL RECOMMENDATION STATEMENTS:

American Diabetes Association (2022b):

- An A1C goal for many nonpregnant adults of <7% (53 mmol/mol) without significant hypocalcemia is appropriate. (Level of evidence: A)
- On the basis of provider judgement and patient preference, achievement of lower A1C levels than the goal of 7% may be acceptable, and even beneficial, if it can be achieved safely without significant hypoglycemia or other adverse effects of treatment. (Level of evidence: B)
- Less stringent A1C goals (such as <8% [64 mmol/mol]) may be appropriate for patients limited life expectancy, or where the harms of treatment are greater than the benefits. (Level of evidence: B)

COPYRIGHT:

Physician Performance Measure (Measures) and related data specifications were developed by the National Committee for Quality Assurance (NCQA). These performance Measures are not clinical guidelines and do not establish a standard of medical care, and have not been tested for all potential applications. NCQA makes no representations, warranties or endorsements about the quality of any organization or clinician who uses or reports performance measures. NCQA has no liability to anyone who relies on measures and specifications or data reflective of performance under such measures and specifications.

The Measures are copyrighted but can be reproduced and distributed, without modification, for noncommercial purposes (e.g., use by healthcare providers in connection with their practices). Commercial use is defined as the sale, licensing, or distribution of the Measures for commercial gain, or incorporation of the Measures into a product or service that is sold, licensed or distributed for commercial gain. All commercial uses or requests for alteration of the measures and specifications must be approved by NCQA and are subject to a license at the discretion of NCQA. NCQA is not responsible for any use of the Measures. © 2023 NCQA. All Rights Reserved.

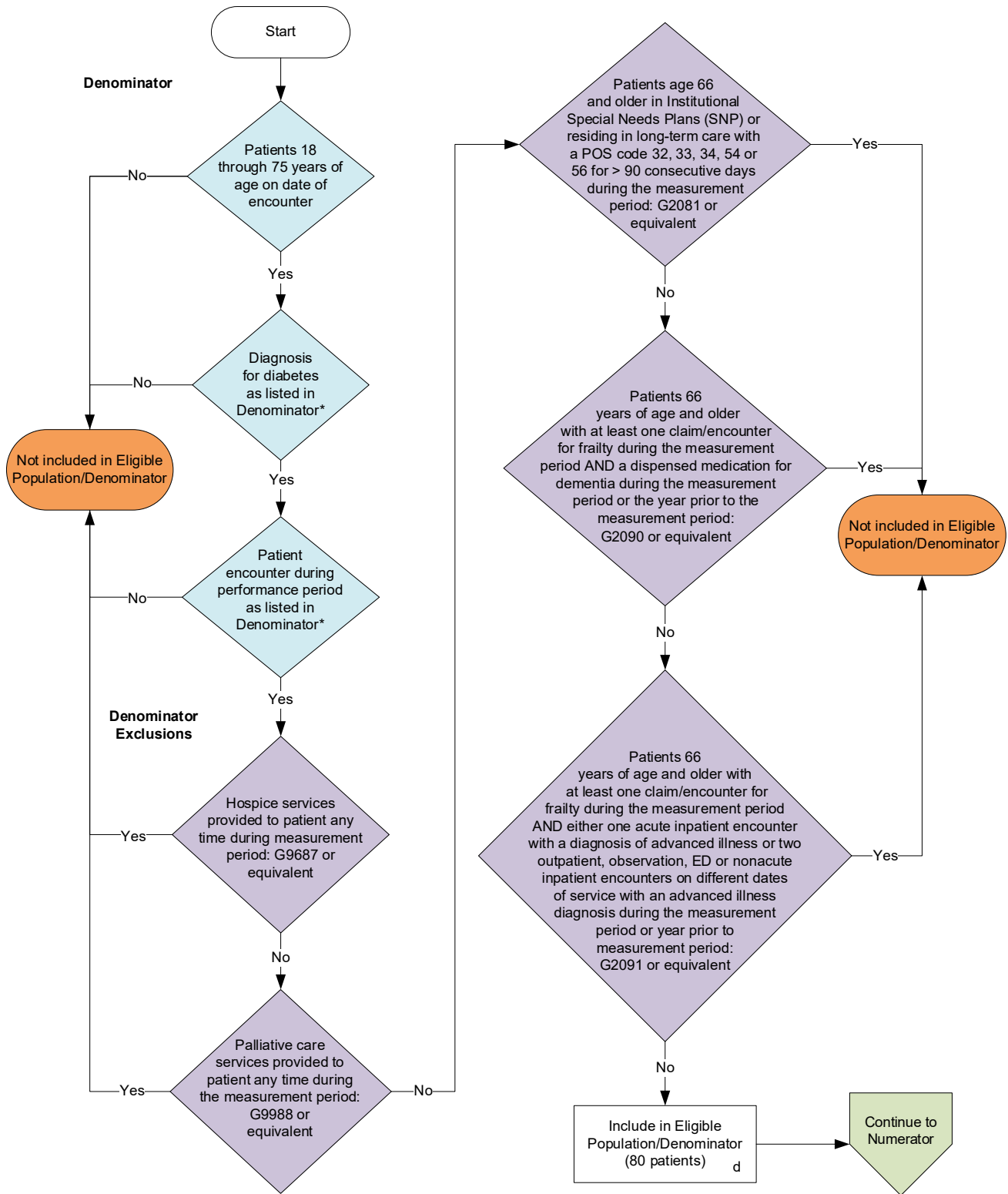
THE MEASURES AND SPECIFICATIONS ARE PROVIDED "AS IS" WITHOUT WARRANTY OF ANY KIND.

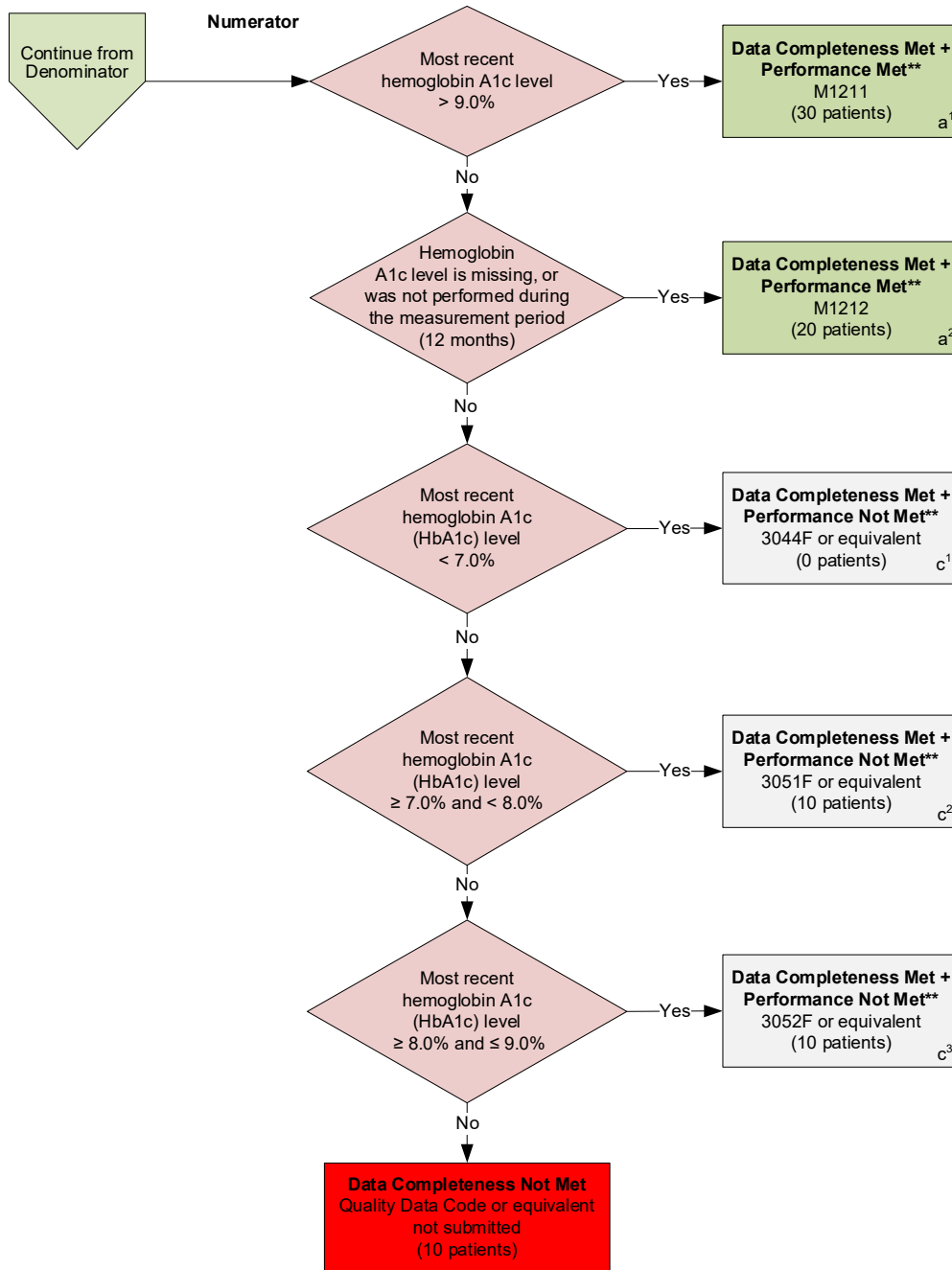
Limited proprietary coding is contained in the Measure specifications for user convenience. Users of proprietary code sets should obtain all necessary licenses from the owners of the code sets. NCQA disclaims all liability for use or accuracy of any CPT or other codes contained in the specifications.

CPT® codes, descriptions and other data are copyright 2004-2023 American Medical Association. All rights reserved. CPT is a trademark of the American Medical Association. No fee schedules, basic units, relative values or related listings are included in CPT. The AMA assumes no liability for the data contained herein. Applicable FARS/DFARS restrictions apply to government use. LOINC® copyright 2004-2023 Regenstrief Institute, Inc. This material contains SNOMED Clinical Terms® (SNOMED CT®) copyright 2004-2023 International Health Terminology Standards Development Organisation. ICD-10 is copyright 2023 World Health Organization. All Rights Reserved.

**2024 Clinical Quality Measure Flow for Quality ID #1 (CBE 0059):
Diabetes: Hemoglobin A1c (HbA1c) Poor Control (>9%)**

Disclaimer: Refer to the measure specification for specific coding and instructions to submit this measure.





SAMPLE CALCULATIONS

Data Completeness=

$$\frac{\text{Performance Met (a}^1+\text{a}^2=50 \text{ patients}) + \text{Performance Not Met (c}^1+\text{c}^2+\text{c}^3=20 \text{ patients)}}{\text{Eligible Population / Denominator (d=80 patients)}} = \frac{70 \text{ patients}}{80 \text{ patients}} = 87.50\%$$

Performance Rate=**

$$\frac{\text{Performance Met (a}^1+\text{a}^2=50 \text{ patients)}}{\text{Data Completeness Numerator (70 patients)}} = \frac{50 \text{ patients}}{70 \text{ patients}} = 71.43\%$$

*See the posted measure specification for specific coding and instructions to submit this measure.

**A lower calculated performance rate for this measure indicates better clinical care or control.

NOTE: Submission Frequency: Patient-Intermediate

CPT only copyright 2023 American Medical Association. All rights reserved.
 The measure diagrams were developed by CMS as a supplemental resource to be used in conjunction with the measure specifications. They should not be used alone or as a substitution for the measure specification.

v8

**2024 Clinical Quality Measure Flow Narrative for Quality ID #1 (CBE 0059):
Diabetes: Hemoglobin A1c (HbA1c) Poor Control (>9%)**

Disclaimer: Refer to the measure specification for specific coding and instructions to submit this measure.

1. Start with Denominator
2. Check *Patients 18 through 75 years of age on date of encounter*:
 - a. If *Patients 18 through 75 years of age on date of encounter* equals No, do not include in *Eligible Population/Denominator*. Stop processing.
 - b. If *Patients 18 through 75 years of age on date of encounter* equals Yes, proceed to check *Diagnosis for diabetes as listed in Denominator**.
3. Check *Diagnosis for diabetes as listed in Denominator**:
 - a. If *Diagnosis for diabetes as listed in Denominator** equals No, do not include in *Eligible Population/Denominator*. Stop processing.
 - b. If *Diagnosis for diabetes as listed in Denominator** equals Yes, proceed to check *Patient encounter during performance period as listed in Denominator**.
4. Check *Patient encounter during performance period as listed in Denominator**:
 - a. If *Patient encounter during performance period as listed in Denominator** equals No, do not include in *Eligible Population/Denominator*. Stop processing.
 - b. If *Patient encounter during performance period as listed in Denominator** equals Yes, proceed to check *Hospice services provided to patient any time during measurement period*.
5. Check *Hospice services provided to patient any time during measurement period*:
 - a. If *Hospice services provided to patient any time during measurement period* equals Yes, do not include in *Eligible Population/Denominator*. Stop processing.
 - b. If *Hospice services provided to patient any time during the measurement period* equals No, proceed to check *Palliative care services provided to patient any time during the measurement period*.
6. Check *Palliative care services provided to patient any time during the measurement period*:
 - a. If *Palliative care services provided to patient any time during the measurement period* equals Yes, do not include in *Eligible Population/Denominator*. Stop processing.
 - b. If *Palliative care services provided to patient any time during the measurement period* equals No, proceed to check *Patients age 66 and older in Institutional Special Needs Plans (SNP) or residing in long-term care with a POS code 32, 33, 34, 54 or 56 for more than 90 consecutive days during the measurement period*.
7. Check *Patients age 66 and older in Institutional Special Needs Plans (SNP) or residing in long-term care with a POS code 32, 33, 34, 54 or 56 for more than 90 consecutive days during the measurement period*:
 - a. If *Patients age 66 and older in Institutional Special Needs Plans (SNP) or residing in long-term care with a POS code 32, 33, 34, 54 or 56 for more than 90 consecutive days during the measurement period* equals Yes, do not include in *Eligible Population/Denominator*. Stop processing.

- b. If Patients age 66 and older in Institutional Special Needs Plans (SNP) or residing in long-term care with a POS code 32, 33, 34, 54 or 56 for more than 90 consecutive days during the measurement period equals No, proceed to check Patients 66 years of age and older with at least one claim/encounter for frailty during the measurement period AND a dispensed medication for dementia during the measurement period or the year prior to the measurement period.
8. Check Patients 66 years of age and older with at least one claim/encounter for frailty during the measurement period AND a dispensed medication for dementia during the measurement period or the year prior to the measurement period:
 - a. If Patients 66 years of age and older with at least one claim/encounter for frailty during the measurement period AND a dispensed medication for dementia during the measurement period or the year prior to the measurement period equals Yes, do not include in Eligible Population/Denominator. Stop processing.
 - b. If Patients 66 years of age and older with at least one claim/encounter for frailty during the measurement period AND a dispensed medication for dementia during the measurement period or the year prior to the measurement period equals No, proceed to check Patients 66 years of age and older with at least one claim/encounter for frailty during the measurement period AND either one acute inpatient encounter with a diagnosis of advanced illness or two outpatient, observation, ED or nonacute inpatient encounters on different dates of service with an advanced illness diagnosis during the measurement period or year prior to measurement period.
9. Check Patients 66 years of age and older with at least one claim/encounter for frailty during the measurement period AND either one acute inpatient encounter with a diagnosis of advanced illness or two outpatient, observation, ED or nonacute inpatient encounters on different dates of service with an advanced illness diagnosis during the measurement period or year prior to measurement period:
 - a. If Patients 66 years of age and older with at least one claim/encounter for frailty during the measurement period AND either one acute inpatient encounter with a diagnosis of advanced illness or two outpatient, observation, ED or nonacute inpatient encounters on different dates of service with an advanced illness diagnosis during the measurement period or year prior to measurement period equals Yes, do not include in the Eligible Population/Denominator. Stop processing.
 - b. If Patients 66 years of age and older with at least one claim/encounter for frailty during the measurement period AND either one acute inpatient encounter with a diagnosis of advanced illness or two outpatient, observation, ED or nonacute inpatient encounters on different dates of service with an advanced illness diagnosis during the measurement period or year prior to measurement period equals No, include in the Eligible Population/Denominator.
10. Denominator Population:
 - Denominator Population is all Eligible Patients in the Denominator. Denominator is represented as Denominator in the Sample Calculation listed at the end of this document. Letter d equals 80 patients in the Sample Calculation.
11. Start Numerator
12. Check Most recent hemoglobin A1c level is greater than 9.0 percent:
 - a. If Most recent hemoglobin A1c level is greater than 9.0 percent equals Yes, include in Data Completeness Met and Performance Met**.

- *Data Completeness Met and Performance Met*** letter is represented as Data Completeness and Performance Rate in the Sample Calculation listed at the end of this document. Letter a¹ equals 30 patients in the Sample Calculation.
- b. If *Most recent hemoglobin A1c level is greater than 9.0 percent* equals No, proceed to check *Hemoglobin A1c level was not performed during the measurement period (12 months)*.
13. Check *Hemoglobin A1c level was not performed during the measurement period (12 months)*:
- a. If *Hemoglobin A1c level was not performed during the measurement period (12 months)* equals Yes, include in *Data Completeness Met and Performance Met***.
- *Data Completeness Met and Performance Met*** letter is represented as Data Completeness and Performance Rate in the Sample Calculation listed at the end of this document. Letter a² equals 20 patients in the Sample Calculation.
- b. If *Hemoglobin A1c level was not performed during the measurement period (12 months)* equals No, proceed to check *Most recent hemoglobin A1c (HbA1c) level is less than 7.0 percent*.
14. Check *Most recent hemoglobin A1c (HbA1c) level is less than 7.0 percent*:
- a. If *Most recent hemoglobin A1c (HbA1c) level is less than 7.0 percent* equals Yes, include in the *Data Completeness Met and Performance Not Met***.
- *Data Completeness Met and Performance Not Met*** letter is represented as Data Completeness in the Sample Calculation listed at the end of this document. Letter c¹ equals 0 patients in the Sample Calculation.
- b. If *Most recent hemoglobin A1c (HbA1c) level is less than 7.0 percent* equals No, proceed to check *Most recent hemoglobin A1c (HbA1c) level greater than or equal to 7.0 percent and less than 8.0 percent*.
15. Check *Most recent hemoglobin A1c (HbA1c) level greater than or equal to 7.0 percent and less than 8.0 percent*:
- a. If *Most recent hemoglobin A1c (HbA1c) level greater than or equal to 7.0 percent and less than 8.0 percent* equals Yes, include in *Data Completeness Met and Performance Not Met***.
- *Data Completeness Met and Performance Not Met*** letter is as the Data Completeness in the Sample Calculation listed at the end of this document. Letter c² equals 10 patients in the Sample Calculation.
- b. If *Most recent hemoglobin A1c (HbA1c) level greater than or equal to 7.0 percent and less than 8.0 percent* equals No, proceed to check *Most recent hemoglobin A1c (HbA1c) level greater than or equal to 8.0 percent and less than or equal to 9.0 percent*.
16. Check *Most recent hemoglobin A1c (HbA1c) level greater than or equal to 8.0 percent and less than or equal to 9.0 percent*:
- a. If *Most recent hemoglobin A1c (HbA1c) level greater than or equal to 8.0 percent and less than or equal to 9.0 percent* equals Yes include in *Data Completeness Met and Performance Not Met***.
- *Data Completeness Met and Performance Not Met*** letter is represented as Data Completeness in the Sample Calculation listed at the end of this document. Letter c³ equals 10 patients in the Sample Calculation.

- b. If *Most recent hemoglobin A1c (HbA1c) level greater than or equal to 8.0 percent and less than or equal to 9.0 percent* equals No, check *Data Completeness Not Met*.

17. Check *Data Completeness Not Met*:

- If *Data Completeness Not Met*, the Quality Data Code or equivalent was not submitted. 10 patients have been subtracted from the Data Completeness Numerator in the Sample Calculation.

Sample Calculations

Data Completeness equals Performance Met (a^1 plus a^2 equals 50 patients) plus Performance Not Met (c^1 plus c^2 plus c^3 equals 20 patients) divided by Eligible Population/Denominator (d equals 80 patients). All equals 70 patients divided by 80 patients. All equals 87.50 percent.

Performance Rate** equals Performance Met (a^1 plus a^2 equals 50 patients) divided by Data Completeness Numerator (70 patients). All equals 50 patients divided by 70 patients. All equals 71.43 percent.

*See the posted measure specification for specific coding and instructions to submit this measure.

**A lower calculated performance rate for this measure indicates better clinical care or control.

NOTE: Submission Frequency: Patient-Intermediate

The measure diagrams were developed by CMS as a supplemental resource to be used in conjunction with the measure specifications. They should not be used alone or as a substitution for the measure specification.