

Quality ID #118 (CBE 0066): Coronary Artery Disease (CAD): Angiotensin-Converting Enzyme (ACE) Inhibitor or Angiotensin Receptor Blocker (ARB) Therapy - Diabetes or Left Ventricular Systolic Dysfunction (LVEF \leq 40%)

2025 COLLECTION TYPE:
MIPS CLINICAL QUALITY MEASURES

MEASURE TYPE:
Process

DESCRIPTION:
Percentage of patients aged 18 years and older with a diagnosis of coronary artery disease seen within a 12-month period who also have diabetes OR a current or prior Left Ventricular Ejection Fraction (LVEF) \leq 40% who were prescribed ACE inhibitor or ARB therapy.

INSTRUCTIONS:
This measure is to be submitted a minimum of **once per performance period** for all patients with CAD seen during the performance period. This measure may be submitted by Merit-based Incentive Payment System (MIPS) eligible clinicians who perform the quality actions described in the measure for the primary management of patients with CAD based on the services provided and the measure-specific denominator coding. Only patients who had at least two denominator eligible visits during the performance period will be counted for Submission Criteria 1 and 2 of this measure.

NOTE: Patient encounters for this measure conducted via telehealth (including but not limited to encounters coded with GQ, GT, POS 02, POS 10) are allowable. Please note that effective January 1, 2025, while a measure may be denoted as telehealth eligible, specific denominator codes within the encounter may no longer be eligible due to changes outlined in the CY 2024 PFS Final Rule List of Medicare Telehealth Services.

Measure Submission Type:
Measure data may be submitted by individual MIPS eligible clinicians, groups, or third-party intermediaries. The listed denominator criteria are used to identify the intended patient population. The numerator options included in this specification are used to submit the quality actions as allowed by the measure. The quality data codes listed do not need to be submitted by MIPS eligible clinicians, groups, or third-party intermediaries that utilize this modality for submissions; however, these codes may be submitted for those third-party intermediaries that utilize Medicare Part B claims data. For more information regarding Application Programming Interface (API), please refer to the Quality Payment Program (QPP) website.

THERE ARE TWO SUBMISSION CRITERIA FOR THIS MEASURE:

1) Patients who are 18 years and older with a diagnosis of CAD with LVEF \leq 40%

OR

2) Patients who are 18 years and older with a diagnosis of CAD who have diabetes

The MIPS eligible clinician should submit data on one of the submission criteria, depending on the clinical findings. If the patient has CAD and LVSD (without a diagnosis of diabetes), use Denominator Submission Criteria 1. If the patient has CAD and diabetes, use Denominator Submission Criteria 2. If the patient has both diabetes and LVSD, the eligible professional may submit quality data for Submission Criteria 2 and this will count as appropriate submission for this patient.

SUBMISSION CRITERIA 1: ALL PATIENTS WITH A DIAGNOSIS OF CAD WITH LVEF ≤ 40% (WITHOUT A DIAGNOSIS OF DIABETES)

DENOMINATOR (SUBMISSION CRITERIA 1):

All patients aged 18 years and older with a diagnosis of coronary artery disease seen within a 12-month period who also have a current or prior LVEF ≤ 40%

Definition:

LVEF ≤ 40% corresponds to qualitative documentation of moderate dysfunction or severe dysfunction.

***DENOMINATOR NOTE:** *Signifies that this CPT Category I code is a non-covered service under the Medicare Part B Physician Fee Schedule (PFS). These non-covered services should be counted in the denominator population for MIPS CQMs.*

Denominator Criteria (Eligible Cases):

Patients aged ≥ 18 years on date of encounter

AND

Diagnosis for coronary artery disease (ICD-10-CM): I20.0, I20.1, I20.2, I20.81, I20.89, I20.9, I21.01, I21.02, I21.09, I21.11, I21.19, I21.21, I21.29, I21.3, I21.4, I21.9, I21.A9, I24.0, I24.89, I24.9, I25.10, I25.110, I25.111, I25.112, I25.118, I25.119, I25.2, I25.5, I25.6, I25.700, I25.701, I25.702, I25.708, I25.709, I25.710, I25.711, I25.712, I25.718, I25.719, I25.720, I25.721, I25.722, I25.728, I25.729, I25.730, I25.731, I25.732, I25.738, I25.739, I25.750, I25.751, I25.752, I25.758, I25.759, I25.760, I25.761, I25.762, I25.768, I25.769, I25.790, I25.791, I25.792, I25.798, I25.799, I25.810, I25.811, I25.812, I25.82, I25.83, I25.84, I25.89, I25.9, Z95.1, Z95.5, Z98.61

AND

Patient encounter during the performance period (CPT): 98000, 98001, 98002, 98003, 98004, 98005, 98006, 98007, 98008, 98009, 98010, 98011, 98012, 98013, 98014, 98015, 98016, 99202, 99203, 99204, 99205, 99212, 99213, 99214, 99215, 99242*, 99243*, 99244*, 99245*, 99304, 99305, 99306, 99307, 99308, 99309, 99310, 99315, 99316, 99341, 99342, 99344, 99345, 99347, 99348, 99349, 99350, 99424, 99426

AND

At least one additional patient encounter during performance period (CPT): 98000, 98001, 98002, 98003, 98004, 98005, 98006, 98007, 98008, 98009, 98010, 98011, 98012, 98013, 98014, 98015, 98016, 99202, 99203, 99204, 99205, 99212, 99213, 99214, 99215, 99242*, 99243*, 99244*, 99245*, 99304, 99305, 99306, 99307, 99308, 99309, 99310, 99315, 99316, 99341, 99342, 99344, 99345, 99347, 99348, 99349, 99350, 99424, 99426

AND

Current or prior left ventricular ejection fraction (LVEF) ≤ 40% or documentation of moderately or severely depressed left ventricular systolic function: G8934

NUMERATOR (SUBMISSION CRITERIA 1):

Patients who were prescribed ACE inhibitor or ARB therapy

Definition:

Prescribed – May include prescription given to the patient for ACE inhibitor or ARB therapy at one or more visits in the measurement period OR patient already taking ACE inhibitor or ARB therapy as documented in current medication list.

***NUMERATOR NOTE:** Eligible clinicians who have given a prescription to the patient for or whose patient is currently taking a combination medication therapy, which contains either an angiotensin converting enzyme (ACE) inhibitor or angiotensin receptor blocker (ARB) (e.g., angiotensin receptor neprilysin inhibitor [ARNI, sacubitril/valsartan], ACE inhibitor+diuretic, ARB+diuretic, (ACE inhibitor+calcium channel blocker) would meet performance for this measure.*

Numerator Options:

Performance Met:

Clinician prescribed angiotensin converting enzyme (ACE) inhibitor or angiotensin receptor blocker (ARB) therapy (**G8935**)

OR

Denominator Exception:

Clinician documented that patient was not an eligible candidate for angiotensin converting enzyme (ACE) inhibitor or angiotensin receptor blocker (ARB) therapy (e.g., allergy, intolerance, pregnancy, renal failure due to ACE inhibitor, diseases of the aortic or mitral valve, other medical reasons) or (e.g., patient declined, other patient reasons) (**G8936**)

OR

Performance Not Met:

Clinician did not prescribe angiotensin converting enzyme (ACE) inhibitor or angiotensin receptor blocker (ARB) therapy, reason not given (**G8937**)

OR

SUBMISSION CRITERIA 2: ALL PATIENTS WITH A DIAGNOSIS OF CAD WHO HAVE DIABETES

DENOMINATOR (SUBMISSION CRITERIA 2):

All patients aged 18 years and older with a diagnosis of coronary artery disease seen within a 12-month period who also have diabetes

Definition:

If a patient has both diabetes and LVSD, submission criteria #2 will count as appropriate submission for this patient.

DENOMINATOR NOTE: *Signifies that this CPT Category I code is a non-covered service under the Medicare Part B Physician Fee Schedule (PFS). These non-covered services should be counted in the denominator population for MIPS CQMs.

Denominator Criteria (Eligible Cases):

Patients aged \geq 18 years on date of encounter

AND

Diagnosis for coronary artery disease (ICD-10-CM): I20.0, I20.1, I20.2, I20.81, I20.89, I20.9, I21.01, I21.02, I21.09, I21.11, I21.19, I21.21, I21.29, I21.3, I21.4, I21.9, I21.A9, I24.0, I24.89, I24.9, I25.10, I25.110, I25.111, I25.112, I25.118, I25.119, I25.2, I25.5, I25.6, I25.700, I25.701, I25.702, I25.708, I25.709, I25.710, I25.711, I25.712, I25.718, I25.719, I25.720, I25.721, I25.722, I25.728, I25.729, I25.730, I25.731, I25.732, I25.738, I25.739, I25.750, I25.751, I25.752, I25.758, I25.759, I25.760, I25.761, I25.762, I25.768, I25.769, I25.790, I25.791, I25.792, I25.798, I25.799, I25.810, I25.811, I25.812, I25.82, I25.83, I25.84, I25.89, I25.9, Z95.1, Z95.5, Z98.61

AND

Diagnosis for diabetes (ICD-10-CM): E10.10, E10.11, E10.21, E10.22, E10.29, E10.311, E10.319, E10.3211, E10.3212, E10.3213, E10.3219, E10.3291, E10.3292, E10.3293, E10.3299, E10.3311, E10.3312, E10.3313, E10.3319, E10.3391, E10.3392, E10.3393, E10.3399, E10.3411, E10.3412, E10.3413, E10.3419, E10.3491, E10.3492, E10.3493, E10.3499, E10.3511, E10.3512, E10.3513, E10.3519, E10.3521, E10.3522, E10.3523, E10.3529, E10.3531, E10.3532, E10.3533, E10.3539, E10.3541, E10.3542, E10.3543, E10.3549, E10.3551, E10.3552, E10.3553, E10.3559, E10.3591, E10.3592, E10.3593, E10.3599, E10.36, E10.37X1, E10.37X2, E10.37X3, E10.37X9, E10.39, E10.40, E10.41, E10.42, E10.43, E10.44, E10.49, E10.51, E10.52, E10.59, E10.610, E10.618, E10.620, E10.621, E10.622, E10.628, E10.630, E10.638, E10.641, E10.649, E10.65, E10.69, E10.8, E10.9, E10.A0, E10.A1, E10.A2, E11.00, E11.01, E11.10, E11.11, E11.21, E11.22, E11.29,

E11.311, E11.319, E11.3211, E11.3212, E11.3213, E11.3219, E11.3291, E11.3292, E11.3293, E11.3299, E11.3311, E11.3312, E11.3313, E11.3319, E11.3391, E11.3392, E11.3393, E11.3399, E11.3411, E11.3412, E11.3413, E11.3419, E11.3491, E11.3492, E11.3493, E11.3499, E11.3511, E11.3512, E11.3513, E11.3519, E11.3521, E11.3522, E11.3523, E11.3529, E11.3531, E11.3532, E11.3533, E11.3539, E11.3541, E11.3542, E11.3543, E11.3549, E11.3551, E11.3552, E11.3553, E11.3559, E11.3591, E11.3592, E11.3593, E11.3599, E11.36, E11.37X1, E11.37X2, E11.37X3, E11.37X9, E11.39, E11.40, E11.41, E11.42, E11.43, E11.44, E11.49, E11.51, E11.52, E11.59, E11.610, E11.618, E11.620, E11.621, E11.622, E11.628, E11.630, E11.638, E11.641, E11.649, E11.65, E11.69, E11.8, E11.9, E13.00, E13.01, E13.10, E13.11, E13.21, E13.22, E13.29, E13.311, E13.319, E13.3211, E13.3212, E13.3213, E13.3219, E13.3291, E13.3292, E13.3293, E13.3299, E13.3311, E13.3312, E13.3313, E13.3319, E13.3391, E13.3392, E13.3393, E13.3399, E13.3411, E13.3412, E13.3413, E13.3419, E13.3491, E13.3492, E13.3493, E13.3499, E13.3511, E13.3512, E13.3513, E13.3519, E13.3521, E13.3522, E13.3523, E13.3529, E13.3531, E13.3532, E13.3533, E13.3539, E13.3541, E13.3542, E13.3543, E13.3549, E13.3551, E13.3552, E13.3553, E13.3559, E13.3591, E13.3592, E13.3593, E13.3599, E13.36, E13.37X1, E13.37X2, E13.37X3, E13.37X9, E13.39, E13.40, E13.41, E13.42, E13.43, E13.44, E13.49, E13.51, E13.52, E13.59, E13.610, E13.618, E13.620, E13.621, E13.622, E13.628, E13.630, E13.638, E13.641, E13.649, E13.65, E13.69, E13.8, E13.9, O24.011, O24.012, O24.013, O24.019, O24.02, O24.03, O24.111, O24.112, O24.113, O24.119, O24.12, O24.13, O24.311, O24.312, O24.313, O24.319, O24.32, O24.33, O24.811, O24.812, O24.813, O24.819, O24.82, O24.83

AND

Patient encounter during the performance period (CPT): 98000, 98001, 98002, 98003, 98004, 98005, 98006, 98007, 98008, 98009, 98010, 98011, 98012, 98013, 98014, 98015, 98016, 99202, 99203, 99204, 99205, 99212, 99213, 99214, 99215, 99242*, 99243*, 99244*, 99245*, 99304, 99305, 99306, 99307, 99308, 99309, 99310, 99315, 99316, 99341, 99342, 99344, 99345, 99347, 99348, 99349, 99350, 99424, 99426

AND

At least one additional patient encounter during performance period (CPT): 98000, 98001, 98002, 98003, 98004, 98005, 98006, 98007, 98008, 98009, 98010, 98011, 98012, 98013, 98014, 98015, 98016, 99202, 99203, 99204, 99205, 99212, 99213, 99214, 99215, 99242*, 99243*, 99244*, 99245*, 99304, 99305, 99306, 99307, 99308, 99309, 99310, 99315, 99316, 99341, 99342, 99344, 99345, 99347, 99348, 99349, 99350, 99424, 99426

NUMERATOR (SUBMISSION CRITERIA 2):

Patients who were prescribed ACE inhibitor or ARB therapy

Definition:

Prescribed – May include prescription given to the patient for ACE inhibitor or ARB therapy at one or more visits in the measurement period OR patient already taking ACE inhibitor or ARB therapy as documented in current medication list.

NUMERATOR NOTE: *Eligible clinicians who have given a prescription to the patient for or whose patient is currently taking a combination medication therapy, which contains either an angiotensin converting enzyme (ACE) inhibitor or angiotensin receptor blocker (ARB) (e.g., angiotensin receptor neprilysin inhibitor [ARNI, sacubitril/valsartan], (ACE inhibitor+diuretic, ARB+diuretic, ACE inhibitor+calcium channel blocker) would meet performance for this measure.*

Numerator Options:

Performance Met:

Angiotensin converting enzyme (ACE) inhibitor or angiotensin receptor blocker (ARB) therapy prescribed (**G8473**)

OR

Denominator Exception:

Angiotensin converting enzyme (ACE) inhibitor or angiotensin receptor blocker (ARB) therapy not prescribed for reasons documented by the clinician (e.g., allergy, intolerance, pregnancy, renal failure due to ACE inhibitor, diseases of the aortic or mitral valve,

other medical reasons) or (e.g., patient declined, other patient reasons) (G8474)

OR

Performance Not Met:

Angiotensin converting enzyme (ACE) inhibitor or angiotensin receptor blocker (ARB) therapy not prescribed, reason not given (G8475)

RATIONALE:

Nonadherence to cardioprotective medications is prevalent among outpatients with coronary artery disease and can be associated with a broad range of adverse outcomes, including all-cause and cardiovascular mortality, cardiovascular hospitalizations, and the need for revascularization procedures.

In the absence of contraindications, ACE inhibitors or ARBs are recommended for all patients with a diagnosis of coronary artery disease and diabetes or reduced left ventricular systolic function. ACE inhibitors remain the first choice, but ARBs can now be considered a reasonable alternative. Both pharmacologic agents have been shown to decrease the risk of death, myocardial infarction, and stroke. Additional benefits of ACE inhibitors include the reduction of diabetic symptoms and complications for patients with diabetes.

CLINICAL RECOMMENDATION STATEMENTS:

The following evidence statements are quoted verbatim from the referenced clinical guidelines.

2023 AHA/ACC/ACCP/ASPC/NLA/PCNA Guideline for the management of patients with chronic coronary disease (CCD): In patients with CCD who also have hypertension, diabetes, LVEF \leq 40%, or CKD, the use of ACE inhibitors, or ARBs if ACE inhibitor-intolerant, is recommended to reduce cardiovascular events. (Class 1 Recommendation, Level of Evidence A)

2012 ACCF/AHA/ACP/AATS/PCNA/SCAI/STS Guideline for the Diagnosis and Management of Patients With Stable Ischemic Heart Disease (SIHD)

RENIN-ANGIOTENSIN-ALDOSTERONE BLOCKER THERAPY

ACE inhibitors should be prescribed in all patients with SIHD who also have hypertension, diabetes mellitus, LVEF 40% or less, or CKD, unless contraindicated. (Class I Recommendation, Level of Evidence: A)

ARBs are recommended for patients with SIHD who have hypertension, diabetes mellitus, LV systolic dysfunction, or CKD and have indications for, but are intolerant of, ACE inhibitors. (Class I Recommendation, Level of Evidence: A)

COPYRIGHT:

Physician performance measures and related data specifications were developed by the American College of Cardiology (ACC) and the American Heart Association (AHA) to facilitate quality improvement activities by physicians. These performance measures are not clinical guidelines and do not establish a standard of medical care, and have not been tested for all potential applications. While copyrighted, they can be reproduced and distributed, without modification, for noncommercial purposes, e.g., use by health care providers in connection with their practices. Commercial use is defined as the sale, license, or distribution of the performance measures for commercial gain, or incorporation of the performance measures into a product or service that is sold, licensed or distributed for commercial gain. Commercial uses of the measures require a license agreement between the user and the ACC or the AHA. Neither the ACC or the AHA, nor its members shall be responsible for any use of these measures.

THE MEASURES AND SPECIFICATIONS ARE PROVIDED "AS IS" WITHOUT WARRANTY OF ANY KIND.

© 2024 American College of Cardiology and American Heart Association. All Rights Reserved.

Limited proprietary coding is contained in the measure specifications for convenience. Users of the proprietary code sets should obtain all necessary licenses from the owners of these code sets. The ACC and the AHA, and its members

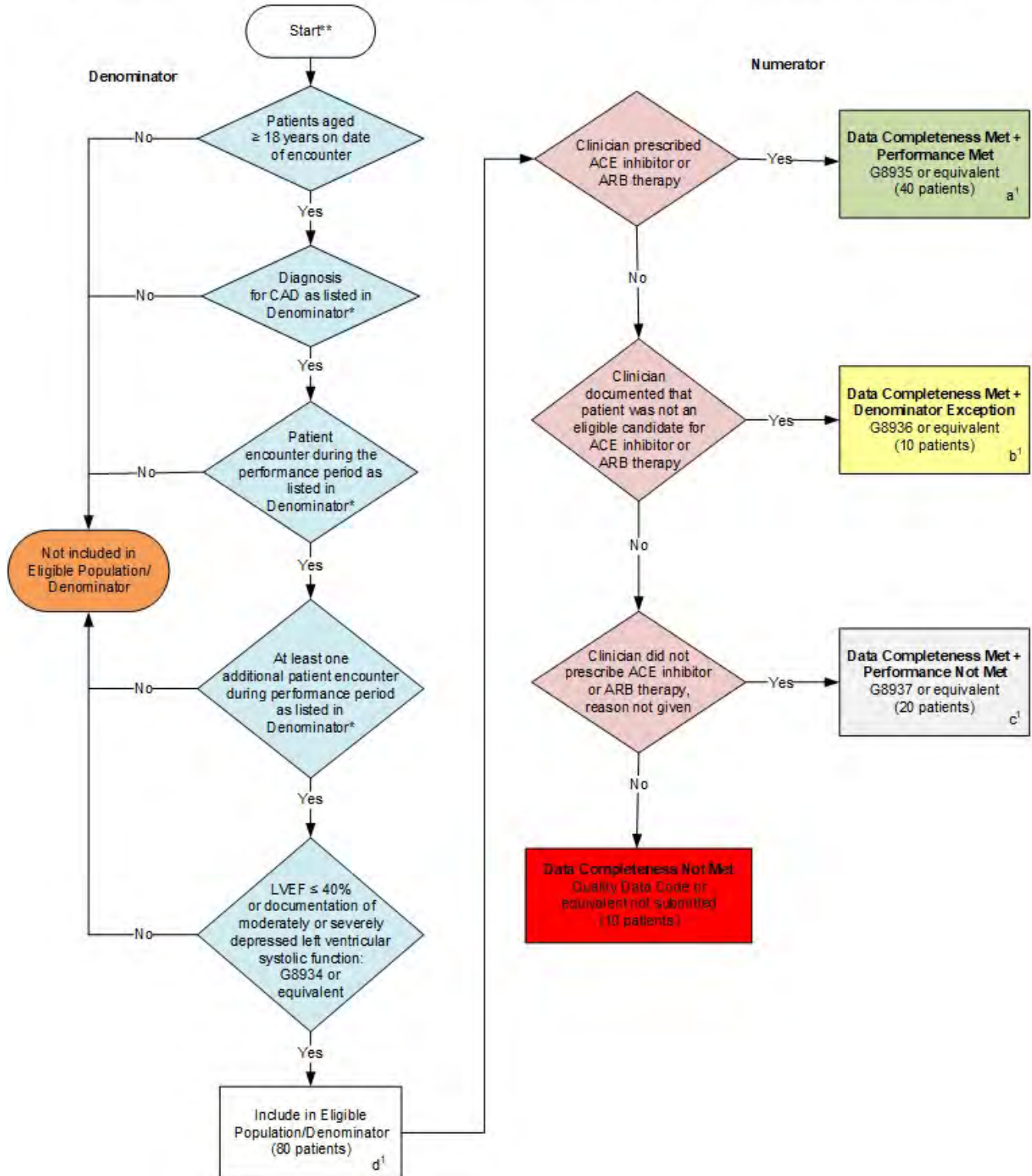
disclaim all liability for use or accuracy of any Current Procedural Terminology (CPT®) or other coding contained in the specifications.

CPT® contained in the measures specifications is copyright 2004-2024 American Medical Association. LOINC® copyright 2004-2024 Regenstrief Institute, Inc. This material contains SNOMED CLINICAL TERMS (SNOMED CT®) copyright 2004-2024 International Health Terminology Standards Development Organisation. ICD-10 is copyright 2024 World Health Organization. All Rights Reserved. Use of SNOMED CT® is only authorized within the United States

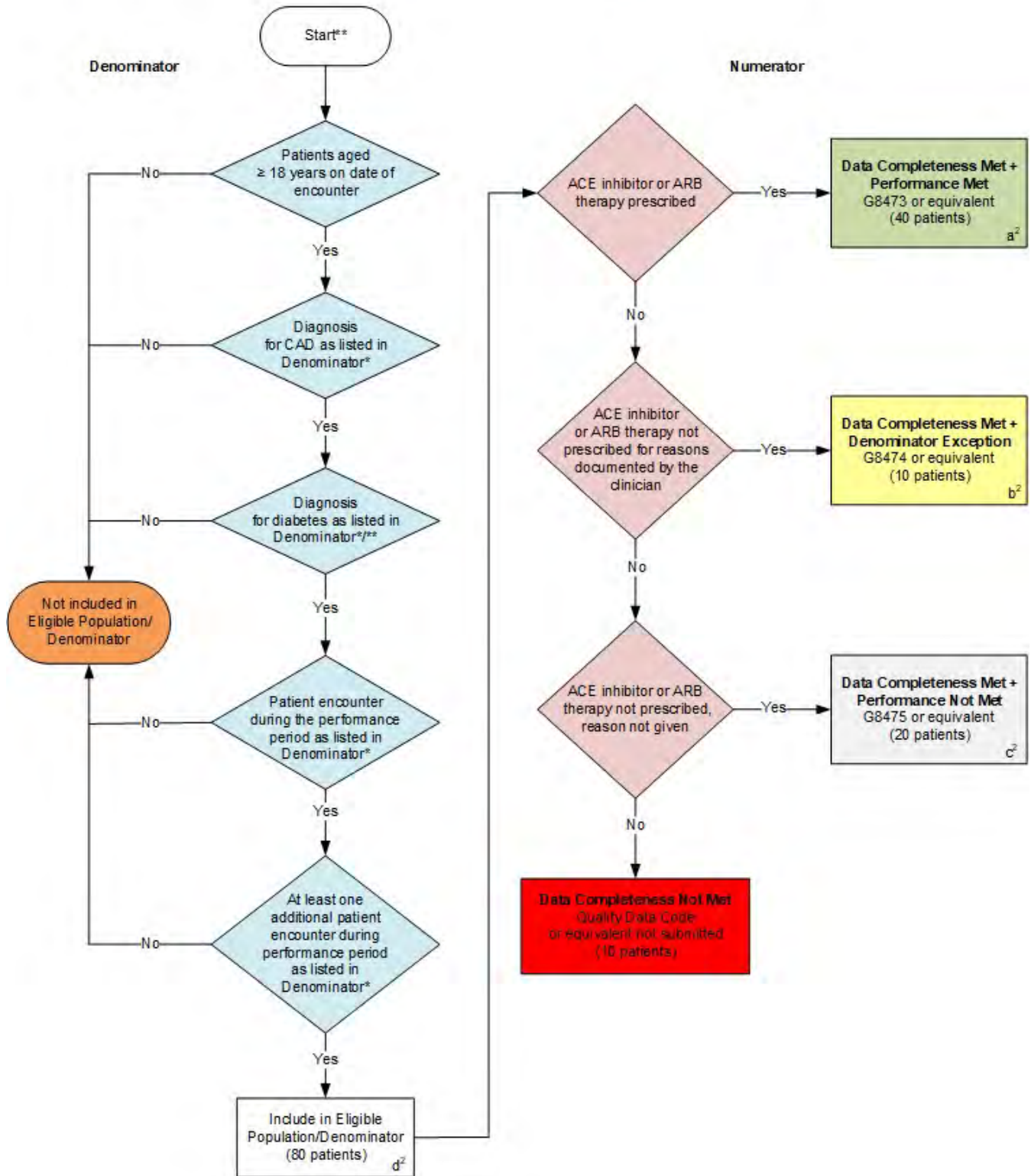
The American Medical Association's and the PCPI® Foundation's significant past efforts and contributions to the performance measures are gratefully acknowledged.

**2025 Clinical Quality Measure Flow for Quality ID #118 (CBE 0066):
Coronary Artery Disease (CAD): Angiotensin-Converting Enzyme (ACE) Inhibitor or Angiotensin Receptor Blocker (ARB) Therapy - Diabetes or Left Ventricular Systolic Dysfunction (LVEF ≤ 40%)
Submission Criteria One**

Disclaimer: Refer to the measure specification for specific coding and instructions to submit this measure.



Submission Criteria Two



SAMPLE CALCULATIONS

Data Completeness=

$$\frac{\text{Performance Met (a}^1\text{+a}^2\text{=80 patients) + Denominator Exception (b}^1\text{+b}^2\text{=20 patients) + Performance Not Met (c}^1\text{+c}^2\text{=40 patients)}}{\text{Eligible Population / Denominator (d}^1\text{+d}^2\text{=160 patients)}} = \frac{140 \text{ patients}}{160 \text{ patients}} = 87.50\%$$

Performance Rate=

$$\frac{\text{Performance Met (a}^1\text{+a}^2\text{=80 patients)}}{\text{Data Completeness Numerator (140 patients) – Denominator Exception (b}^1\text{+b}^2\text{=20 patients)}} = \frac{80 \text{ patients}}{120 \text{ patients}} = 66.67\%$$

*See the posted measure specification for specific coding and instructions to submit this measure.

**If a patient has both diabetes and LVSD, Submission Criteria 2 is appropriate for submitting on this patient.

This measure contains two Submission Criteria, although as the Sample Calculation indicates, there is ONLY one data completeness and one performance rate for this measure.

NOTE: Submission Frequency: Patient-Process

CPT only copyright 2024 American Medical Association. All rights reserved.
The measure diagrams were developed by CMS as a supplemental resource to be used in conjunction with the measure specifications. They should not be used alone or as a substitution for the measure specification.

v9

2025 Clinical Quality Measure Flow Narrative for Quality ID #118 (CBE 0066):
Coronary Artery Disease (CAD): Angiotensin-Converting Enzyme (ACE) Inhibitor or Angiotensin
Receptor Blocker (ARB) Therapy – Diabetes or Left Ventricular Systolic Dysfunction (LVEF \leq 40%)

Disclaimer: Refer to the measure specification for specific coding and instructions to submit this measure.

Submission Criteria One:

1. Start with Denominator
2. Check *Patients aged greater than or equal to 18 years on date of encounter*.
 - a. If *Patients aged greater than or equal to 18 years on date of encounter* equals No, do not include in *Eligible Population/Denominator*. Stop processing.
 - b. If *Patients aged greater than or equal to 18 years on date of encounter* equals Yes, proceed to check *Diagnosis for CAD as listed in Denominator**.
3. Check *Diagnosis for CAD as listed in Denominator**.
 - a. If *Diagnosis for CAD as listed in Denominator** equals No, do not include in *Eligible Population/Denominator*. Stop processing.
 - b. If *Diagnosis for CAD as listed in Denominator** equals Yes, proceed to check *Patient encounter during the performance period as listed in Denominator**.
4. Check *Patient encounter during the performance period as listed in Denominator**.
 - a. If *Patient encounter during the performance period as listed in Denominator** equals No, do not include in *Eligible Population/Denominator*. Stop processing.
 - b. If *Patient encounter during the performance period as listed in Denominator** equals Yes, proceed to check *At least one additional patient encounter during performance period as listed in Denominator**.
5. Check *At least one additional patient encounter during performance period as listed in Denominator**.
 - a. If *At least one additional patient encounter during performance period as listed in Denominator** equals No, do not include in *Eligible Population/Denominator*. Stop processing.
 - b. If *At least one additional patient encounter during performance period as listed in Denominator** equals Yes, proceed to check *LVEF less than or equal to 40 percent or documentation of moderately or severely depressed left ventricular systolic function*.
6. Check *LVEF less than or equal to 40 percent or documentation of moderately or severely depressed left ventricular systolic function*.
 - a. If *LVEF less than or equal to 40 percent or documentation of moderately or severely depressed left ventricular systolic function* equals No, do not include in *Eligible Population/Denominator*. Stop processing.
 - b. If *LVEF less than or equal to 40 percent or documentation of moderately or severely depressed left ventricular systolic function* equals Yes, include in *Eligible Population/Denominator*.
7. Denominator Population:

- Denominator Population is all Eligible Patients in the Denominator. Denominator is represented as Denominator in the Sample Calculation listed at the end of this document. Letter d¹ equals 80 patients in the Sample Calculation.
8. Start Numerator
 9. Check *Clinician prescribed ACE inhibitor or ARB therapy*:
 - a. If *Clinician prescribed ACE inhibitor or ARB therapy* equals Yes, include in *Data Completeness Met and Performance Met*.
 - *Data Completeness Met and Performance Met* letter is represented in the Data Completeness and Performance Rate in the Sample Calculation listed at the end of this document. Letter a¹ equals 40 patients in Sample Calculation.
 - b. If *Clinician prescribed ACE inhibitor or ARB therapy* equals No, proceed to check *Clinician documented that patient was not an eligible candidate for ACE inhibitor or ARB therapy*.
 10. Check *Clinician documented that patient was not an eligible candidate for ACE inhibitor or ARB therapy*:
 - a. If *Clinician documented that patient was not an eligible candidate for ACE inhibitor or ARB therapy* equals Yes, include in *Data Completeness Met and Denominator Exception*.
 - *Data Completeness Met and Denominator Exception* letter is represented in the Data Completeness in the Sample Calculation listed at the end of this document. Letter b¹ equals 10 patients in the Sample Calculation.
 - b. If *Clinician documented that patient was not an eligible candidate for ACE inhibitor or ARB therapy* equals No, proceed to check *Clinician did not prescribe ACE inhibitor or ARB therapy, reason not given*.
 11. Check *Clinician did not prescribe ACE inhibitor or ARB therapy, reason not given*:
 - a. If *Clinician did not prescribe ACE inhibitor or ARB therapy, reason not given* equals Yes, include in *Data Completeness Met and Performance Not Met*.
 - *Data Completeness Met and Performance Not Met* letter is represented in the Data Completeness in the Sample Calculation listed at the end of this document. Letter c¹ equals 20 patients in the Sample Calculation.
 - b. If *Clinician did not prescribe ACE inhibitor or ARB therapy, reason not given* equals No, proceed to check *Data Completeness Not Met*.
 12. Check *Data Completeness Not Met*:
 - If *Data Completeness Not Met*, the Quality Data Code or equivalent was not submitted. 10 patients have been subtracted from the Data Completeness Numerator in the Sample Calculation.

Submission Criteria Two:

1. Start with Denominator
2. Check *Patients aged greater than or equal to 18 years on date of encounter*.

- a. If *Patients aged greater than or equal to 18 years on date of encounter* equals No, do not include in *Eligible Population/Denominator*. Stop processing.
 - b. If *Patients aged greater than or equal to 18 years on date of encounter* equals Yes, proceed to check *Diagnosis for CAD as listed in Denominator**.
3. Check *Diagnosis for CAD as listed in Denominator**:
- a. If *Diagnosis for CAD as listed in Denominator** equals No, do not include in *Eligible Population/Denominator*. Stop processing.
 - b. If *Diagnosis for CAD as listed in Denominator** equals Yes, proceed to check *Diagnosis for diabetes as listed in Denominator***.
4. Check *Diagnosis for diabetes as listed in Denominator****:
- a. If *Diagnosis for diabetes as listed in Denominator**** equals No, do not include in *Eligible Population/Denominator*. Stop processing.
 - b. If *Diagnosis for diabetes as listed in Denominator**** equals Yes, proceed to check *Patient encounter during the performance period as listed in Denominator**.
5. Check *Patient encounter during the performance period as listed in Denominator**:
- a. If *Patient encounter during the performance period as listed in Denominator** equals No, do not include in *Eligible Population/Denominator*. Stop processing.
 - b. If *Patient encounter during the performance period as listed in Denominator** equals Yes, proceed to check *At least one additional patient encounter during performance period as listed in Denominator**.
6. Check *At least one additional patient encounter during performance period as listed in Denominator**:
- a. If *At least one additional patient encounter during performance period as listed in Denominator** equals No, do not include in *Eligible Population/Denominator*. Stop processing.
 - b. If *At least one additional patient encounter during performance period as listed in Denominator** equals Yes, include in *Eligible Population/Denominator*.
7. Denominator Population:
- Denominator Population is all Eligible Patients in the Denominator. Denominator is represented as Denominator in the Sample Calculation listed at the end of this document. Letter d² equals 80 patients in the Sample Calculation.
8. Start Numerator
9. Check *ACE inhibitor or ARB therapy prescribed*:
- a. If *ACE inhibitor or ARB therapy prescribed* equals Yes, include in *Data Completeness Met and Performance Met*.
 - *Data Completeness Met and Performance Met* letter is represented in the Data Completeness and Performance Rate in the Sample Calculation listed at the end of this document. Letter a² equals 40 patients in Sample Calculation.

- b. If *ACE inhibitor or ARB therapy prescribed* equals No, proceed to check *ACE inhibitor or ARB therapy not prescribed for reasons documented by the clinician*.
10. Check *ACE inhibitor or ARB therapy not prescribed for reasons documented by the clinician*:
- a. If *ACE inhibitor or ARB therapy not prescribed for reasons documented by the clinician* equals Yes, include in *Data Completeness Met and Denominator Exception*.
- *Data Completeness Met and Denominator Exception* letter is represented in the Data Completeness and Performance Rate in the Sample Calculation listed at the end of this document. Letter b² equals 10 patients in the Sample Calculation.
- b. If *ACE inhibitor or ARB therapy not prescribed for reasons documented by the clinician* equals No, proceed to check *ACE inhibitor or ARB therapy not prescribed, reason not given*.
11. Check *ACE inhibitor or ARB therapy not prescribed, reason not given*:
- a. If *ACE inhibitor or ARB therapy not prescribed, reason not given* equals Yes, include in *Data Completeness Met and Performance Not Met*.
- *Data Completeness Met and Performance Not Met* letter is represented in the Data Completeness in the Sample Calculation listed at the end of this document. Letter c² equals 20 patients in the Sample Calculation.
- b. If *ACE inhibitor or ARB therapy not prescribed, reason not given* equals No, proceed to check *Data Completeness Not Met*.
12. Check *Data Completeness Not Met*:
- If *Data Completeness Not Met*, the Quality Data Code or equivalent was not submitted. 10 patients have been subtracted from the Data Completeness Numerator in the Sample Calculation.

Sample Calculations

Data Completeness equals Performance Met (a¹ plus a² equals 80 patients) plus Denominator Exception (b¹ plus b² equals 20 patients) plus Performance Not Met (c¹ plus c² equals 40 patients) divided by Eligible Population/Denominator (d¹ plus d² equals 160 patients). All equals 140 patients divided by 160 patients. All equals 87.50 percent.

Performance Rate equals Performance Met (a¹ plus a² equals 80 patients) divided by Data Completeness Numerator (140 patients) minus Denominator Exception (b¹ plus b² equals 20 patients). All equals 80 patients divided by 120 patients. All equals 66.67 percent.

*See the posted measure specification for specific coding and instructions to submit this measure.

**If a patient has both diabetes and LVSD, Submission Criteria 2 is appropriate for submitting on this patient.

This measure contains two Submission Criteria, although as the Sample Calculation indicates, there is ONLY one data completeness and one performance rate for this measure.

NOTE: Submission Frequency: Patient-Process

The measure diagrams were developed by CMS as a supplemental resource to be used in conjunction with the measure specifications. They should not be used alone or as a substitution for the measure specification.