

## Quality ID #450 (CBE 1858): Appropriate Treatment for Patients with Stage I (T1c) – III HER2 Positive Breast Cancer

### 2025 COLLECTION TYPE:

MIPS CLINICAL QUALITY MEASURES (CQMS)

### MEASURE TYPE:

Process – High Priority

### DESCRIPTION:

Percentage of patients aged 18 to 70 with stage I (T1c) – III HER2 positive breast cancer for whom appropriate treatment is initiated.

### INSTRUCTIONS:

This measure is to be submitted a minimum of once per performance period for patients with breast cancer seen during the performance period. This measure may be submitted by Merit-based Incentive Payment System (MIPS) eligible clinicians who perform the quality actions described in the measure based on the services provided and the measure-specific denominator coding.

### **Measure Submission Type:**

Measure data may be submitted by individual MIPS eligible clinicians, groups, or third-party intermediaries. The listed denominator criteria are used to identify the intended patient population. The numerator options included in this specification are used to submit the quality actions as allowed by the measure. The quality data codes listed do not need to be submitted by MIPS eligible clinicians, groups, or third-party intermediaries that utilize this modality for submissions; however, these codes may be submitted for those third-party intermediaries that utilize Medicare Part B claims data. For more information regarding Application Programming Interface (API), please refer to the Quality Payment Program (QPP) website.

### DENOMINATOR:

All breast cancer patients aged 18 to 70 with pathologic stage I (T1c) – III HER2 positive breast cancer diagnosed between July 1<sup>st</sup> of the previous performance period through June 30<sup>th</sup> of the current performance period

#### Denominator Instructions:

For the purposes of this measure, only pathologic staging and HER-2 testing performed between July 1<sup>st</sup> of the previous performance period through June 30<sup>th</sup> of the current performance period will be included in the denominator of this measure.

#### Definitions:

Use the 2018 ASCO/CAP guideline definitions (re-affirmed in 2023) to determine HER2 status-

#### **HER2 Positive:**

- If result is IHC 3+ based on circumferential membrane staining that is complete, intense and in >10% of the invasive tumor cells
- If result is ISH positive based on:
  - Single-probe average HER2 copy number  $\geq 6.0$  signals/cell
  - Dual-probe HER2/CEP17 ratio  $\geq 2.0$  with an average HER2 copy number  $\geq 4.0$  signals/cell
  - Dual-probe HER2/CEP17 ratio  $< 2.0$  with an average HER2 copy number = 6.0 signals/cell

#### **HER2 Equivocal:**

- If result is IHC 2+ based on circumferential membrane staining that is incomplete and/or weak/moderate and within > 10% of the invasive tumor cells
- If result is ISH equivocal based on:

- Single-probe ISH average HER2 copy number  $\geq 4.0$  and  $< 6.0$  signals/cell
- Dual-probe HER2/CEP17 ratio  $< 2.0$  with an average HER2 copy number  $\geq 4.0$  and  $< 6.0$  signals/cell

**HER2 Negative:**

- If result is IHC 1+ based on incomplete membrane staining that is faint/barely perceptible and in  $> 10\%$  of the invasive tumor cells
- If result is IHC 0 based on no staining observed or membrane staining that is incomplete and is faint/barely perceptible and in  $\leq 10\%$  of the invasive tumor cells
- ISH negative based on:
  - Single-probe average HER2 copy number  $< 4.0$  signals/cell
  - Dual-probe HER2/CEP17 ratio  $< 2.0$  with an average HER2 copy number  $< 4.0$  signals/cell

**HER2 Indeterminate:**

Report HER2 test result as indeterminate if technical issues prevent one or both tests (IHC and ISH) from being reported as positive, negative, or equivocal.

Conditions may include:

- Inadequate specimen handling
- Artifacts (crush or edge artifacts) that make interpretation difficult
- Analytic testing failure.

***DENOMINATOR NOTE:** This measure includes both female and male breast cancers. While treatment recommendations for males have largely been extrapolated from results of clinical trials focused on breast cancer in females, management of breast cancer in males is similar in overall management to breast cancer in females. Consistent with guidance in NCCN guideline recommendations for adjuvant systemic therapy, chemotherapy with/without HER2-targeted therapy should be recommended for males with breast cancer according to guidelines for females with breast cancer.*

**Denominator Criteria (Eligible Cases):**

Patients age 18-70 years on date of encounter

**AND**

Diagnosis of breast cancer between July 1st of the previous performance period through June 30th of the current performance period (ICD-10-CM): C50.011, C50.012, C50.019, C50.021, C50.022, C50.029, C50.111, C50.112, C50.119, C50.121, C50.122, C50.129, C50.211, C50.212, C50.219, C50.221, C50.222, C50.229, C50.311, C50.312, C50.319, C50.321, C50.322, C50.329, C50.411, C50.412, C50.419, C50.421, C50.422, C50.429, C50.511, C50.512, C50.519, C50.521, C50.522, C50.529, C50.611, C50.612, C50.619, C50.621, C50.622, C50.629, C50.811, C50.812, C50.819, C50.821, C50.822, C50.829, C50.911, C50.912, C50.919, C50.921, C50.922, C50.929

**AND**

At least two patient encounters during the current performance period (CPT): 99202, 99203, 99204, 99205, 99212, 99213, 99214, 99215

**WITHOUT**

Telehealth Modifier (including but not limited to): GQ, GT, POS 02, POS 10

**AND**

HER-2/neu positive: G9830

**AND**

AJCC stage at breast cancer diagnosis = II or III: G9831

**OR**

AJCC stage at breast cancer diagnosis = I (IA or IB) and T-Stage at breast cancer diagnosis does NOT equal = T1, T1a, T1b: G9832

**AND NOT**

**DENOMINATOR EXCLUSION:**

Patients with pregnancy during adjuvant treatment course: G2205

**NUMERATOR:**

Patients whose adjuvant treatment course includes both chemotherapy and HER2-targeted therapy

**NUMERATOR NOTE:** *The quality action of this measure is the appropriateness of treatment rather than timeliness of treatment. The timing of administration of HER2-targeted therapies is expected to vary depending on the cytotoxic agents used. The numerator statement is intended to capture an adjuvant treatment course that includes both chemotherapy and HER2-targeted therapy, independent of possible administration sequences. The timeframe to identify the adjuvant treatment course is within six months of breast cancer pathologic staging. To satisfy the numerator, both chemotherapy and HER2-targeted therapy must occur within six months of pathologic staging. An FDA-approved trastuzumab biosimilar is an appropriate substitute for trastuzumab.*

**Numerator Options:**

**Performance Met:**

Patient received adjuvant treatment course including both chemotherapy and HER2-targeted therapy (G2206)

**OR**

**Denominator Exception:**

Reason for not administering adjuvant treatment course including both chemotherapy and HER2-targeted therapy (e.g. poor performance status (ECOG 3-4; Karnofsky  $\leq 50$ ), cardiac contraindications, insufficient renal function, insufficient hepatic function, other active or secondary cancer diagnoses, other medical contraindications, patients who died during initial treatment course or transferred during or after initial treatment course) (G2207)

**OR**

**Performance Not Met:**

Patient did not receive adjuvant treatment course including both chemotherapy and HER2-targeted therapy (G2208)

**RATIONALE:**

Approximately 15% of patients with breast cancer have tumors that overexpress the human epidermal growth factor receptor (HER2) protein. All of the adjuvant trials of trastuzumab have demonstrated clinically significant improvements in disease-free survival. The benefits of trastuzumab are independent of estrogen receptor (ER) status. The American Society of Clinical Oncology (ASCO) envisions that use of this measure will improve concordance with recommendations for the use of HER2-targeted therapy with chemotherapy for patients with stage I (T1c) – III, HER2 positive breast cancer. We recognize the importance of ensuring that the appropriate patient population receives guideline concordant treatment as studies have shown that the administration of HER2-targeted therapies significantly improves overall survival in patients with high-risk HER2 positive breast cancer (NCCN 2023).

**CLINICAL RECOMMENDATION STATEMENTS:**

*NCCN Recommendation for Adjuvant HER2-Targeted Therapy*

The panel recommends HER2-targeted therapy in patients with HER2-positive tumors. Trastuzumab is a humanized monoclonal antibody with specificity for the extracellular domain of HER2. The panel has designated use of trastuzumab with chemotherapy as a category 1 recommendation in patients with HER2-positive tumors greater than 1 cm (NCCN 2023).

**References:**

1. Gradishar WJ, Moran MS, Abraham J, et al. NCCN Guidelines Panel. NCCN Clinical Practice Guidelines in Oncology – Breast Cancer. Version 5.2023. December 5, 2023. [https://www.nccn.org/professionals/physician\\_gls/pdf/breast.pdf](https://www.nccn.org/professionals/physician_gls/pdf/breast.pdf)

2. Wolff AC, Hammond MEH, Allison KH, Harvey BE, Mangu PB, Bartlett JMS, et al. Human Epidermal Growth Factor Receptor 2 Testing in Breast Cancer: American Society of Clinical Oncology/College of American Pathologists Clinical Practice Guideline Focused Update. *J Clin Oncol*. 2018 Jul 10; 36(20):2105-2122.
3. Wolff, A. C., Somerfield, M. R., Dowsett, M., Hammond, M. E. H., Hayes, D. F., Mcshane, L. M., Saphner, T. J., Spears, P. A., & Allison, K. H.. (2023). Human Epidermal Growth Factor Receptor 2 Testing in Breast Cancer. *Archives of Pathology & Laboratory Medicine*, 147(9), 993–1000. <https://doi.org/10.5858/arpa.2023-0950-sa>

**COPYRIGHT:**

The Measure is not a clinical guideline, does not establish a standard of medical care, and has not been tested for all potential applications.

The Measure, while copyrighted, can be reproduced and distributed, without modification, for noncommercial purposes, e.g., use by health care providers in connection with their practices. Commercial use is defined as the sale, license, or distribution of the Measures for commercial gain, or incorporation of the Measure into a product or service that is sold, licensed or distributed for commercial gain.

Commercial uses of the Measure require a license agreement between the user and the American Society of Clinical Oncology (ASCO) and prior written approval of ASCO. Contact [measurement@asco.org](mailto:measurement@asco.org) for licensing this measure. Neither ASCO nor its members shall be responsible for any use of the Measure.

ASCO encourages use of the Measures by other health care professionals, where appropriate.

**THE MEASURES AND SPECIFICATIONS ARE PROVIDED “AS IS” WITHOUT WARRANTY OF ANY KIND.**

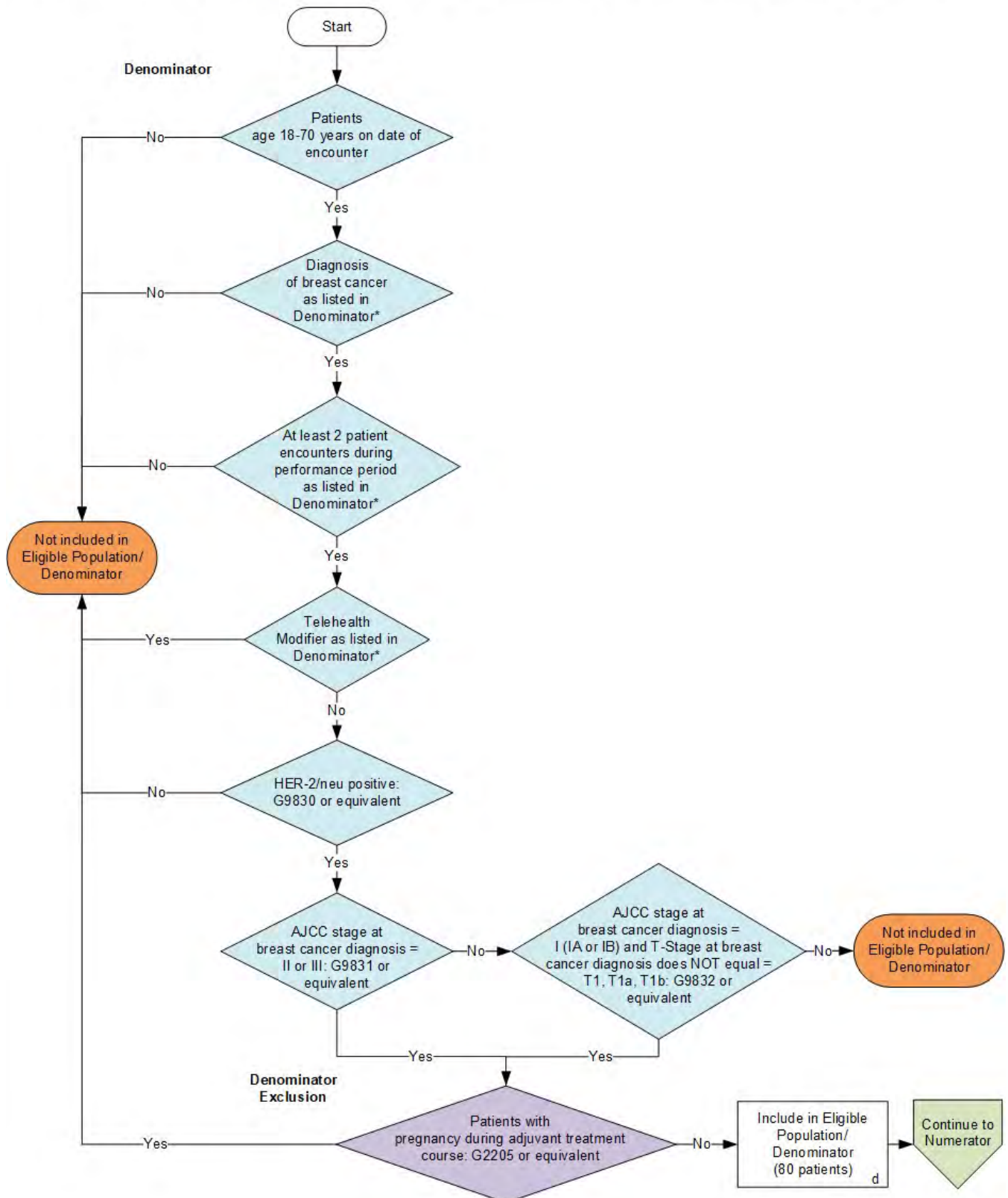
© 2024 American Society of Clinical Oncology. All Rights Reserved.

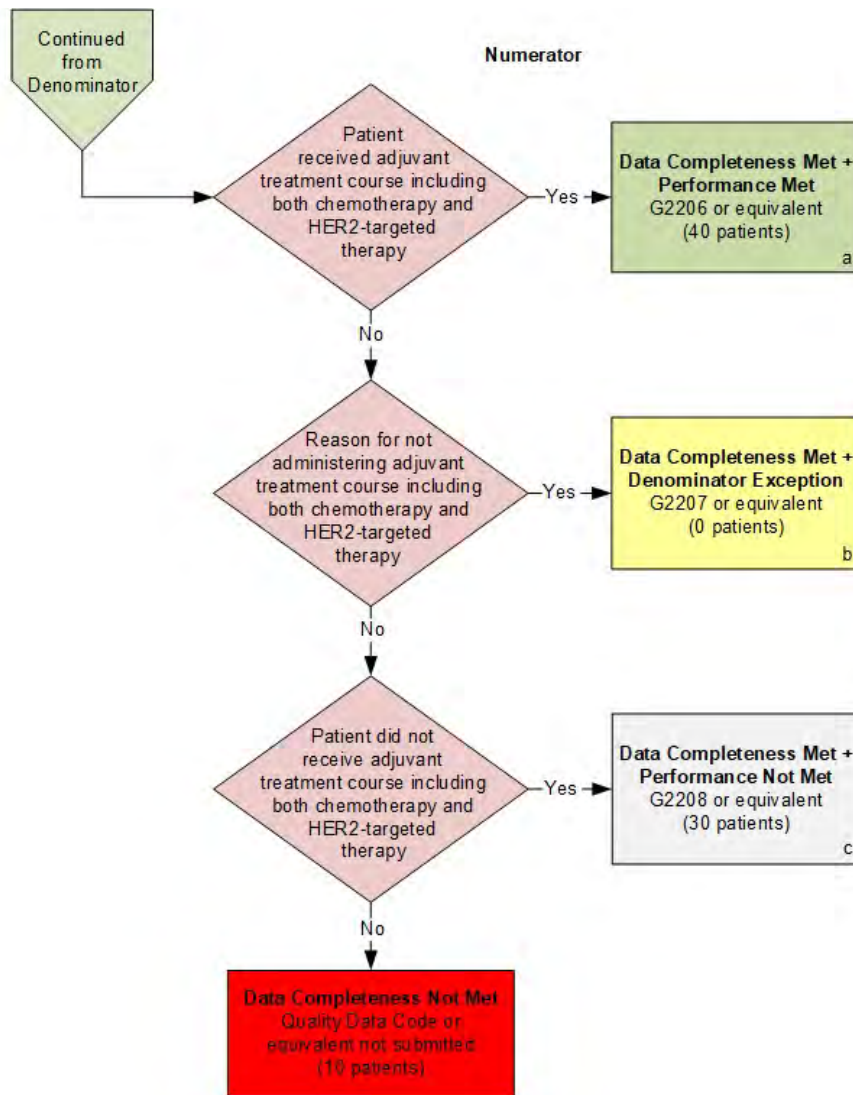
Limited proprietary coding is contained in the Measure specification for convenience. A license agreement must be entered prior to a third party's use of Current Procedural Terminology (CPT®) or other proprietary code sets contained in the Measures. Any other use of CPT or other coding by the third party is strictly prohibited. ASCO and its members disclaim all liability for use or accuracy of any Current Procedural Terminology (CPT®) or other coding contained in the specification.

CPT® contained in the Measures specifications is copyright 2004-2024 American Medical Association. LOINC® copyright 2004-2024 Regenstreif Institute, Inc. SNOMED CLINICAL TERMS (SNOMED CT®) copyright 2004-2024 The International Health Terminology Standards Development Organisation (IHTSDO). ICD-10 is copyright 2024 World Health Organization. All Rights Reserved.

**2025 Clinical Quality Measure Flow for Quality ID #450 (CBE 1858):  
Appropriate Treatment for Patients with Stage I (T1c) – III HER2 Positive Breast Cancer**

*Disclaimer: Refer to the measure specification for specific coding and instructions to submit this measure.*





### SAMPLE CALCULATIONS

**Data Completeness=**  

$$\frac{\text{Performance Met (a=40 patients)} + \text{Denominator Exception (b=0 patients)} + \text{Performance Not Met (c=30 patients)}}{\text{Eligible Population / Denominator (d=80 patients)}} = \frac{70 \text{ patients}}{80 \text{ patients}} = 87.50\%$$

**Performance Rate=**  

$$\frac{\text{Performance Met (a=40 patients)}}{\text{Data Completeness Numerator (70 patients) – Denominator Exception (b=0 patients)}} = \frac{40 \text{ patients}}{70 \text{ patients}} = 57.14\%$$

\*See the posted measure specification for specific coding and instructions to submit this measure.

NOTE: Submission Frequency: Patient-Periodic

CPT only copyright 2024 American Medical Association. All rights reserved.  
 The measure diagrams were developed by CMS as a supplemental resource to be used in conjunction with the measure specifications. They should not be used alone or as a substitution for the measure specification.

v9

**2025 Clinical Quality Measure Flow Narrative for Quality ID #450 (CBE 1858):  
Appropriate Treatment for Patients with Stage I (T1c) – III HER2 Positive Breast Cancer**

*Disclaimer: Refer to the measure specification for specific coding and instructions to submit this measure.*

1. Start with Denominator
2. Check *Patients age 18-70 years on date of encounter*.
  - a. If *Patients age 18-70 years on date of encounter* equals No, do not include in *Eligible Population/Denominator*. Stop processing.
  - b. If *Patients age 18-70 years on date of encounter* equals Yes, proceed to check *Diagnosis of breast cancer as listed in Denominator\**.
3. Check *Diagnosis of breast cancer as listed in Denominator\**.
  - a. If *Diagnosis of breast cancer as listed in Denominator\** equals No, do not include in *Eligible Population/Denominator*. Stop processing.
  - b. If *Diagnosis of breast cancer as listed in Denominator\** equals Yes, proceed to check *At least 2 patient encounters during performance period as listed in Denominator\**.
4. Check *At least 2 patient encounters during performance period as listed in Denominator\**.
  - a. If *At least 2 patient encounters during performance period as listed in Denominator\** equals No, do not include in *Eligible Population/Denominator*. Stop processing.
  - b. If *At least 2 patient encounters during performance period as listed in Denominator\** equals Yes, proceed to check *Telehealth Modifier as listed in Denominator\**.
5. Check *Telehealth Modifier as listed in Denominator\**.
  - a. If *Telehealth Modifier as listed in Denominator\** equals Yes, do not include in *Eligible Population/Denominator*. Stop processing.
  - b. If *Telehealth Modifier as listed in Denominator\** equals No, proceed to check *HER-2/neu positive*.
6. Check *HER-2/neu positive*.
  - a. If *HER-2/neu positive* equals No, do not include in *Eligible Population/Denominator*. Stop processing.
  - b. If *HER-2/neu positive* equals Yes, proceed to check *AJCC stage at breast cancer diagnosis = II or III*.
7. Check *AJCC stage at breast cancer diagnosis = II or III*.
  - a. If *AJCC stage at breast cancer diagnosis = II or III* equals No, proceed to check *AJCC stage at breast cancer diagnosis = I (IA or IB) and T-Stage at breast cancer diagnosis does NOT equal = T1, T1a, T1b*.
  - b. If *AJCC stage at breast cancer diagnosis = II or III* equals Yes, proceed to check *Patients with pregnancy during adjuvant treatment course*.
8. Check *AJCC stage at breast cancer diagnosis = I (IA or IB) and T-Stage at breast cancer diagnosis does NOT equal = T1, T1a, T1b*.

- a. If *AJCC stage at breast cancer diagnosis = I (IA or IB) and T-Stage at breast cancer diagnosis does NOT equal = T1, T1a, T1b* equals No, do not include in *Eligible Population/Denominator*. Stop processing.
  - b. If *AJCC stage at breast cancer diagnosis = I (IA or IB) and T-Stage at breast cancer diagnosis does NOT equal = T1, T1a, T1b* equals Yes, proceed to check *Patients with pregnancy during adjuvant treatment course*.
9. Check *Patients with pregnancy during adjuvant treatment course*:
- a. If *Patients with pregnancy during adjuvant treatment course* equals No, include in *Eligible Population/Denominator*.
  - b. If *Patients with pregnancy during adjuvant treatment course* equals Yes, do not include in *Eligible Population/Denominator*. Stop processing.
10. Denominator Population:
- Denominator Population is all Eligible Patients in the Denominator. Denominator is represented as Denominator in the Sample Calculation listed at the end of this document. Letter d equals 80 patients in the Sample Calculation.
11. Start Numerator
12. Check *Patient received adjuvant treatment course including both chemotherapy and HER2-targeted therapy*:
- a. If *Patient received adjuvant treatment course including both chemotherapy and HER2-targeted therapy* equals Yes, include in *Data Completeness Met and Performance Met*.
    - *Data Completeness Met and Performance Met* letter is represented in the Data Completeness and Performance Rate in the Sample Calculation listed at the end of this document. Letter a equals 40 patients in the Sample Calculation.
  - b. If *Patient received adjuvant treatment course including both chemotherapy and HER2-targeted therapy* equals No, proceed to check *Reason for not administering adjuvant treatment course including both chemotherapy and HER2-targeted therapy*.
13. Check *Reason for not administering adjuvant treatment course including both chemotherapy and HER2-targeted therapy*:
- a. If *Reason for not administering adjuvant treatment course including both chemotherapy and HER2-targeted therapy* equals Yes, include in *Data Completeness Met and Denominator Exception*.
    - *Data Completeness Met and Denominator Exception* letter is represented in the Data Completeness and Performance Rate in the Sample Calculation listed at the end of this document. Letter b equals 0 patients in the Sample Calculation.
  - b. If *Reason for not administering adjuvant treatment course including both chemotherapy and HER2-targeted therapy* equals No, proceed to check *Patient did not receive adjuvant treatment course including both chemotherapy and HER2-targeted therapy*.
14. Check *Patient did not receive adjuvant treatment course including both chemotherapy and HER2-targeted therapy*:



- a. If *Patient did not receive adjuvant treatment course including both chemotherapy and HER2-targeted therapy* equals Yes, include in *Data Completeness Met and Performance Not Met*.
  - *Data Completeness Met and Performance Not Met* letter is represented in the Data Completeness in the Sample Calculation listed at the end of this document. Letter c equals 30 patients in the Sample Calculation.
- b. If *Patient did not receive adjuvant treatment course including both chemotherapy and HER2-targeted therapy* equals No, proceed to check *Data Completeness Not Met*.

15. Check *Data Completeness Not Met*:

- If *Data Completeness Not Met*, the Quality Data Code or equivalent was not submitted. 10 patients have been subtracted from the Data Completeness Numerator in the Sample Calculation.

### Sample Calculations

Data Completeness equals Performance Met (a equals 40 patients) plus Denominator Exception (b equals 0 patients) plus Performance Not Met (c equals 30 patients) divided by Eligible Population/Denominator (d equals 80 patients). All equals 70 patients divided by 80 patients. All equals 87.50 percent.

Performance Rate equals Performance Met (a equals 40 patients) divided by Data Completeness Numerator (70 patients) minus Denominator Exception (b equals 0 patients). All equals 40 patients divided by 70 patients. All equals 57.14 percent.

\*See the posted measure specification for specific coding and instructions to submit this measure.

NOTE: Submission Frequency: Patient-Periodic

The measure diagrams were developed by CMS as a supplemental resource to be used in conjunction with the measure specifications. They should not be used alone or as a substitution for the measure specification.